

Anti-CD3 Antibody (Monoclonal, CA-3)

Catalog Number: MA1015

About CD3E

The alpha-beta heterodimeric T-cell antigen receptor binds antigen in association with major histocompatibility complex proteins on host cell surfaces. These 2 disulfide-linked glycoproteins, TCRA and TCRB are associated on T-cell surfaces with a complex of proteins called CD3 (formerly T3). Human CD3 consists of at least 4 proteins: gamma, delta, epsilon, and zeta. The CD3-gamma/CD3-delta gene pair is within 300 kb of the CD3-epsilon gene and therefore these genes form a tightly linked cluster on 11q23. The clustering may be significant in terms of their simultaneous activations during T-cell development.

Overview

Product Name	Anti-CD3 Antibody (Monoclonal, CA-3)
Reactive Species	Human
Description	Mouse IgG monoclonal antibody for CD3, CD3e molecule, epsilon (CD3-TCR complex) (CD3E) detection. Tested with IHC-F, ICC, FCM in Human. No cross reactivity with other proteins.
Application	Flow Cytometry, IHC, ICC
Clonality	Monoclonal CA-3
Formulation	Mouse ascites fluid, 1.2% sodium acetate, 2mg BSA, with 0.01mg NaN ₃ as preservative.
Storage Instructions	At -20°C for one year. After reconstitution, at 4°C for one month. It can also be aliquotted and stored frozen at -20°C for a longer time. Avoid repeated freezing and thawing.
Host	Mouse
Uniprot ID	D4A5M2

Technical Details

Immunogen	Human thymocytes followed by Sezary T cells.
-----------	--

Recommended Detection Systems	Boster recommends HRP Conjugated anti-Mouse IgG Super Vision Assay Kit (SV0001-1) for IHC(F) and ICC.
Cross Reactivity	No cross reactivity with other proteins
Isotype	Mouse IgG1
Form	Lyophilized
Concentration	Add 1ml of PBS buffer will yield a concentration of 100ug/ml.
Purification	Ascites
Suggested Dilutions	Immunohistochemistry(Frozen Section), 1µg/ml, Human Immunocytochemistry, 0.5-1µg/ml, Human Flow Cytometry, 1-3µg/1x10 ⁶ cells, Human For protocols please visit https://www.bosterbio.com/protocol-and-troubleshooting/

Anti-CD3 Antibody (Monoclonal, CA-3) (MA1015) Images

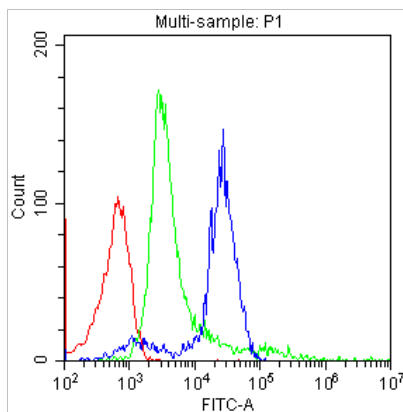


Figure 1. Flow Cytometry analysis of human PBMC cells using anti-CD3 antibody (MA1015). Overlay histogram showing human PBMC cells stained with MA1015 (Blue line). The cells were blocked with 10% normal goat serum. And then incubated with mouse anti-CD3 Antibody (MA1015, 1½µg/1x10⁶ cells) for 30 min at 20°C. DyLight®488 conjugated goat anti-mouse IgG (BA1126, 5-10½µg/1x10⁶ cells) was used as secondary antibody for 30 minutes at 20°C. Isotype control antibody (Green line) was mouse gG (1½µg/1x10⁶) used under the same conditions. Unlabelled sample (Red line) was also used as a control.

Submit a product review to Biocompare.com

Submit a review of this product to Biocompare.com to receive a \$20 Amazon giftcard! Your reviews help your fellow scientists make the right decisions. Thank you for your contribution.

