

## Anti-Gelsolin Gsn Antibody (Monoclonal, GS-2C4)

Catalog Number: MA1044

### About Gsn

Gelsolin, a protein of leukocytes, platelets, and other cells, severs actin filaments in the presence of submicromolar calcium, thereby solating cytoplasmic actin gels. A gelsolin variant with 23 more N-terminal amino acids is a plasma component probably involved in the clearance of actin, the most abundant human protein, from the circulation. Gelsolin is located in 9q34. Plasma and cytoplasmic gelsolins are encoded by a single gene and contain a duplicated actin-binding domain.

### Overview

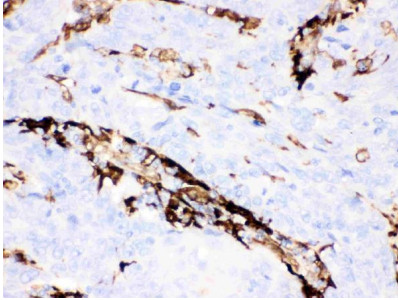
Product Name	Anti-Gelsolin Gsn Antibody (Monoclonal, GS-2C4)
Reactive Species	Human, Rabbit
Description	Boster Bio Anti-Gelsolin Gsn Antibody (Monoclonal, GS-2C4) catalog # MA1044. Tested in IHC, WB applications. This antibody reacts with Human, Rabbit.
Application	IHC, WB
Clonality	Monoclonal GS-2C4
Formulation	Mouse IgG in stabilizing components, 1.2% sodium acetate and 0.01mg NaN <sub>3</sub> .
Storage Instructions	Store at -20°C for one year from date of receipt. After reconstitution, at 4°C for one month. It can also be aliquotted and stored frozen at -20°C for six months. Avoid repeated freeze-thaw cycles.
Host	Mouse
Uniprot ID	Q68FP1

### Technical Details

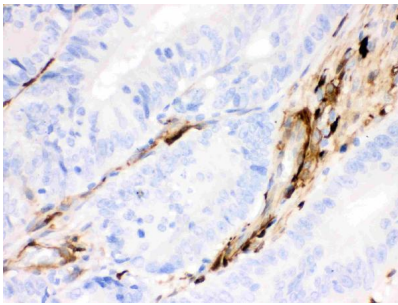
Immunogen	Human plasma gelsolin.
Recommended Detection Systems	Boster recommends Enhanced Chemiluminescent Kit with anti-Mouse IgG (EK1001) for Western blot, and HRP Conjugated anti-Mouse IgG Super Vision Assay Kit (SV0001-1) for IHC(P) and IHC(F).
Cross Reactivity	No cross-reactivity with other proteins
Isotype	Mouse IgG1
Form	Lyophilized
Concentration	Adding 1 ml of PBS buffer will yield a concentration of 100 ug/ml.
Purification	Ascites
Suggested Dilutions	Immunohistochemistry (Paraffin-embedded Section), 1-2ug/ml, Human, rabbit

Immunohistochemistry (Frozen Section), 1-2ug/ml, Human, rabbit, -  
Western blot, 0.5-1ug/ml, Human, rabbit

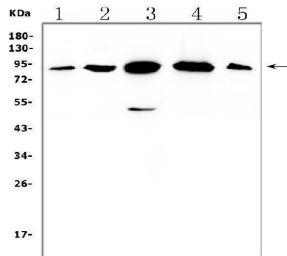
## Anti-Gelsolin Gsn Antibody (Monoclonal, GS-2C4) (MA1044) Images



Anti-Gelsolin antibody, MA1044, IHC(P)IHC(P): Human Lung Cancer Tissue



Anti-Gelsolin antibody, MA1044, IHC(P)IHC(P): Human Intestinal Cancer Tissue



Western blot analysis of Gelsolin using anti-Gelsolin antibody (MA1044). Electrophoresis was performed on a 5-20% SDS-PAGE gel at 70V (Stacking gel) / 90V (Resolving gel) for 2-3 hours. The sample well of each lane was loaded with 50ug of sample under reducing conditions. Lane 1: human Hela whole cell lysate, Lane 2: human A549 whole cell lysate, Lane 3: monkey COS-7 whole cell lysate, Lane 4: human Caco-2 whole cell lysate, Lane 5: human HepG2 whole cell lysate. After Electrophoresis, proteins were transferred to a Nitrocellulose membrane at 150mA for 50-90 minutes. Blocked the membrane with 5% Non-fat Milk/ TBS for 1.5 hour at RT. The membrane was incubated with mouse anti-Gelsolin antigen affinity purified monoclonal antibody (Catalog # MA1044) at 0.5 ug/mL overnight at 4°C, then washed with TBS-0.1%Tween 3 times with 5 minutes each and probed with a goat anti-mouse IgG-HRP secondary antibody at a dilution of 1:10000 for 1.5 hour at RT. The signal is developed using an Enhanced Chemiluminescent detection (ECL) kit (Catalog # EK1001) with Tanon 5200 system. A specific band was detected for Gelsolin at approximately 90KD. The expected band size for Gelsolin is at 86KD.

## 1 Publications Citing This Product

1. PubMed ID: 28656274, Guo, Y., Cui, L., Jiang, S., Zhang, A., & Jiang, S. (2017). Proteomics of acute heart failure in a rat post-myocardial infarction model. *Molecular Medicine Reports*, 16(2), 1946-1956. Advance online publication. doi: 10.3892/mmr.2017.6820

Visit [bosterbio.com/anti-gelsolin-antibody-monoclonal-ma1044-boster.html](http://bosterbio.com/anti-gelsolin-antibody-monoclonal-ma1044-boster.html) to see all 1 publications.

## Submit a product review to Biocompare.com

Submit a review of this product to Biocompare.com to receive a \$20 Amazon.com giftcard! Your reviews help your fellow scientists make the right decisions. Thank you for your contribution.



Anti-Gelsolin Gsn Antibody (Monoclonal, GS-2C4)

For Research Use Only. Not for use in diagnostic procedures.