

Anti-Involucrin Ivl Antibody (Monoclonal, SY5)

Catalog Number: MA1053

About Ivl

Involucrin is a keratinocyte protein that first appears in the cell cytosol, but ultimately becomes cross-linked to membrane proteins by transglutaminase. The gene consists of 585 amino acids, 390 of which form a central decapeptide repeat, rich in glutamine and glutamic acid. The involucrin gene, encoding a protein of the terminally differentiated keratinocyte, is polymorphic in the human. Involucrin has previously been mapped to chromosome 1q21. The epidermal protein involucrin has been remodeled in the higher primates. And the existence of two populations of East Asian involucrin alleles gives support for the existence of a Eurasian stem lineage from which Caucasians and a part of the Asian population originated.

Overview

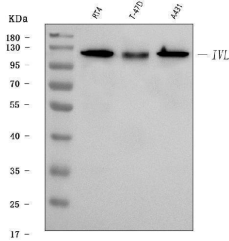
Product Name	Anti-Involucrin Ivl Antibody (Monoclonal, SY5)
Reactive Species	Human, Pig
Description	Boster Bio Anti-Involucrin Ivl Antibody (Monoclonal, SY5) catalog # MA1053. Tested in IHC, ICC, WB applications. This antibody reacts with Human, Pig.
Application	IHC, ICC, WB
Clonality	Monoclonal SY5
Formulation	Mouse IgG in stabilizing components, 1.2% sodium acetate and 0.01mg NaN ₃ .
Storage Instructions	Store at -20°C for one year from date of receipt. After reconstitution, at 4°C for one month. It can also be aliquotted and stored frozen at -20°C for six months. Avoid repeated freeze-thaw cycles.
Host	Mouse
Uniprot ID	P48998

Technical Details

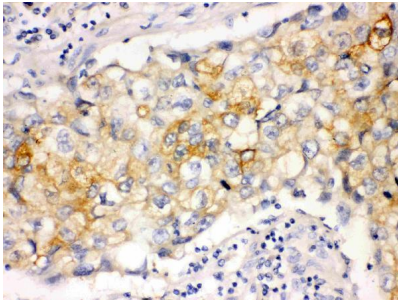
Immunogen	Human involucrin.
Recommended Detection Systems	Boster recommends Enhanced Chemiluminescent Kit with anti-Mouse IgG (EK1001) for Western blot, and HRP Conjugated anti-Mouse IgG Super Vision Assay Kit (SV0001-1) for IHC(P), IHC(F) and ICC.
Cross Reactivity	No cross-reactivity with other proteins
Isotype	Mouse IgG1
Form	Lyophilized
Concentration	Adding 1 ml of PBS buffer will yield a concentration of 100 ug/ml.

Purification	Ascites
Suggested Dilutions	Immunohistochemistry (Paraffin-embedded Section), 0.4-1ug/ml, Human, pig Immunocytochemistry , 1ug/ml, Human, pig, - Immunohistochemistry (Frozen Section), 0.4-1ug/ml, Human, pig, - Western blot, 1ug/ml, Human, pig

Anti-Involucrin Ivl Antibody (Monoclonal, SY5) (MA1053) Images



Western blot analysis of Involucrin using anti-Involucrin antibody (MA1053). Electrophoresis was performed on a 5-20% SDS-PAGE gel at 70V (Stacking gel) / 90V (Resolving gel) for 2-3 hours. The sample well of each lane was loaded with 30 ug of sample under reducing conditions. Lane 1: human RT4 whole cell lysates, Lane 2: human T-47D whole cell lysates, Lane 3: human A431 whole cell lysates. After electrophoresis, proteins were transferred to a nitrocellulose membrane at 150 mA for 50-90 minutes. Blocked the membrane with 5% non-fat milk/TBS for 1.5 hour at RT. The membrane was incubated with mouse anti-Involucrin antigen affinity purified monoclonal antibody (Catalog # MA1053) at 1 ug/mL overnight at 4°C, then washed with TBS-0.1%Tween 3 times with 5 minutes each and probed with a goat anti-mouse IgG-HRP secondary antibody at a dilution of 1:10000 for 1.5 hour at RT. The signal is developed using an Enhanced Chemiluminescent detection (ECL) kit (Catalog # EK1001) with Tanon 5200 system. A specific band was detected for Involucrin at approximately 68 kDa. The expected band size for Involucrin is at 68 kDa.



IHC analysis of Involucrin using anti-Involucrin antibody (MA1053). Involucrin was detected in a paraffin-embedded section of human lung cancer tissue. Heat mediated antigen retrieval was performed in EDTA buffer (pH 8.0, epitope retrieval solution). The tissue section was blocked with 10% goat serum. The tissue section was then incubated with 1 ug/ml mouse anti-Involucrin Antibody (MA1053) overnight at 4°C. Peroxidase Conjugated Goat Anti-mouse IgG was used as secondary antibody and incubated for 30 minutes at 37°C. The tissue section was developed using HRP Conjugated Mouse IgG Super Vision Assay Kit (Catalog # SV0001) with DAB as the chromogen.

Submit a product review to Biocompare.com

Submit a review of this product to Biocompare.com to receive a \$20 Amazon.com giftcard! Your reviews help your fellow scientists make the right decisions. Thank you for your contribution.



Anti-Involucrin Ivl Antibody (Monoclonal, SY5)

For Research Use Only. Not for use in diagnostic procedures.