

Anti-Laminin LAMA1 Monoclonal Antibody

Catalog Number: MA1054

About LAMA1

Laminin is a heterotrimeric extracellular matrix protein consisting of 3 chains: alpha-1, beta-1 and gamma-1, formerly called beta-2 (LAMA2). This gene is over 260,000 base pairs and contains 64 exons. Laminin is similar with merosin, a basement membrane-associated protein found in placenta, striated muscle, and peripheral nerve, and both of them are members of the same family of basement membrane proteins. And merosin is the same as laminin M, a striated muscle-specific, basal-lamina-associated protein, it may play a primary role in the pathogenesis of that disorder.

Overview

Product Name	Anti-Laminin LAMA1 Monoclonal Antibody
Reactive Species	Human, Pig
Description	Boster Bio Anti-Laminin LAMA1 Monoclonal Antibody catalog # MA1054. Tested in IHC applications. This antibody reacts with Human, Pig.
Application	IHC
Clonality	Monoclonal LAM-89
Formulation	Mouse ascites fluid, 1.2% sodium acetate, 2mg BSA, with 0.01mg NaN ₃ as preservative.
Storage Instructions	Store at -20°C for one year from date of receipt. After reconstitution, at 4°C for one month. It can also be aliquotted and stored frozen at -20°C for six months. Avoid repeated freeze-thaw cycles.
Host	Mouse
Uniprot ID	P15800

Technical Details

Immunogen	Human laminin.
Predicted Reactive Species	Monkey
Recommended Detection Systems	Boster recommends Enhanced Chemiluminescent Kit with HRP Conjugated anti-Mouse IgG Super Vision Assay Kit (SV0001-1) for IHC(P).
Cross Reactivity	No cross-reactivity with other proteins
Isotype	Mouse IgG1
Form	Lyophilized
Concentration	Adding 1 ml of PBS buffer will yield a concentration of 100 ug/ml.
Purification	Ascites

Suggested Dilutions

Dilute the sample so that the expected range of concentrations fall within the detection range of this kit.

If the expected range of concentration is unknown, a pilot test should be conducted to decide the optimal dilution ratio for your samples.

Some PubMed article(s) citing the expression level of this target are as follows:

Boster Bio's internal QC testing used:

Immunohistochemistry (Paraffin-embedded Section), 2-5ug/ml, Human, feline, pig, By Heat

Anti-Laminin LAMA1 Monoclonal Antibody (MA1054) Images

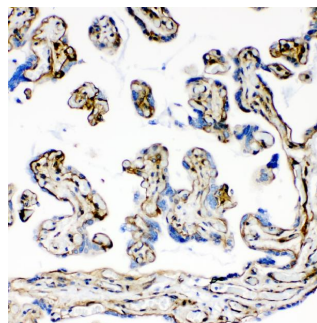


Figure 1. IHC analysis of Laminin using anti-Laminin antibody (MA1054).

Laminin was detected in a paraffin-embedded section of human placenta tissue. Heat mediated antigen retrieval was performed in EDTA buffer (pH 8.0, epitope retrieval solution). The tissue section was blocked with 10% goat serum. The tissue section was then incubated with 2 ug/ml mouse anti-Laminin Antibody (MA1054) overnight at 4°C. Peroxidase Conjugated Goat Anti-mouse IgG was used as secondary antibody and incubated for 30 minutes at 37°C. The tissue section was developed using HRP Conjugated Mouse IgG Super Vision Assay Kit (Catalog # SV0001) with DAB as the chromogen.

11 Publications Citing This Product

1. PubMed ID: 33348129, Zhang J, Chang H, Yin R, Xu S, Wang H, Gao Y. A temporal study on musculoskeletal morphology and metabolism in hibernating Daurian ground squirrels (*Spermophilus dauricus*). *Bone*. 2020 Dec 18;115:826. doi: 10.1016/j.bone.2020.115826. Epub ahead of print. PMID: 3334
2. PubMed ID: 33340652, Kong XT, Wang Z, Mou JJ, Li CS, Xue HL, Wu M, Chen L, Xu JH, Xu LX. Change on apoptosis, autophagy and mitochondria of the Harderian gland in *Cricetulus barabensis* during age. *Comp Biochem Physiol B Biochem Mol Biol*. 2020 Dec 16;110:547. doi: 10.1016/j.cbpb.2020.110547.
3. PubMed ID: 25197353, Wu Y, Chen W, Guo M, He Q, Hu Y. Int J Clin Exp Pathol. 2014 Jul 15;7(8):4827-36. Ecollection 2014. Effects Of Transforming Growth Factor- β 2 On Myocilin Expression And Secretion In Human Primary Cultured Trabecular Meshwork Cells.

Visit bosterbio.com/anti-laminin-antibody-monoclonal-ma1054-boster.html to see all 11 publications.

Submit a product review to Biocompare.com

Submit a review of this product to Biocompare.com to receive a \$20 Amazon.com giftcard! Your reviews help your fellow scientists make the right decisions. Thank you for your contribution.



Anti-Laminin LAMA1 Monoclonal Antibody