

Anti-MAP1 Antibody (Monoclonal, HM-1)

Catalog Number: MA1056

About Map1a

Microtubules are the ubiquitous cytoskeletal structural components that are involved in intracellular transport. They are composed of tubulin and microtubule-associated proteins (MAPs). MAP1 is one of the major neuronal MAPs as well as being the largest (350KD). MAPs include MAP1A, MAP1B, and MAP2. MAP1a is a single-copy gene spanning 10.5 kb. MAP1a coding sequence is contained in five exons. MAP1B is encoded as a polyprotein that is processed to form a complex N-terminal microtubule-binding domain.

Overview

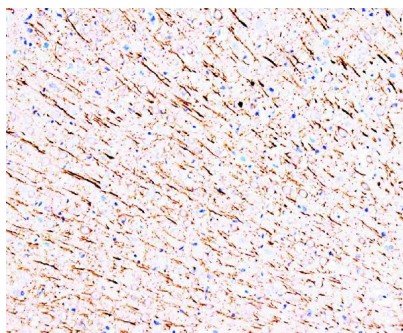
Product Name	Anti-MAP1 Antibody (Monoclonal, HM-1)
Reactive Species	Mouse, Rat
Description	Mouse IgG monoclonal antibody for MAP1, microtubule-associated protein 1A (MAP1A) detection. Tested with WB, IHC-P, IHC-F in Mouse;rat. No cross reactivity with other proteins.
Application	IHC, WB
Clonality	Monoclonal HM-1
Formulation	Mouse ascites fluid, 1.2% sodium acetate, 2mg BSA, with 0.01mg NaN3 as preservative.
Storage Instructions	At -20°C for one year. After reconstitution, at 4°C for one month. It can also be aliquotted and stored frozen at -20°C for a longer time. Avoid repeated freezing and thawing.
Host	Mouse
Uniprot ID	P34926

Technical Details

Immunogen	Rat brain microtubule-associated proteins (MAPs).
Recommended Detection Systems	Boster recommends Enhanced Chemiluminescent Kit with anti-Mouse IgG (EK1001) for Western blot, and HRP Conjugated anti-Mouse IgG Super Vision Assay Kit

	(SV0001-1) for IHC(P) and IHC(F).
Cross Reactivity	No cross reactivity with other proteins
Isotype	Mouse IgG1
Form	Lyophilized
Concentration	Add 1ml of PBS buffer will yield a concentration of 100ug/ml.
Purification	Ascites
Suggested Dilutions	Immunohistochemistry(Paraffin-embedded Section), 1-2µg/ml, Mouse, rat, By Heat Immunohistochemistry(Frozen Section), 1-2µg/ml, Mouse, rat, - Western blot, 0.5-2µg/ml, Mouse, rat
	For protocols please visit https://www.bosterbio.com/protocol-and-troubleshooting/

Anti-MAP1 Antibody (Monoclonal, HM-1) (MA1056) Images



Anti-MAP1 antibody (monoclonal), MA1056, IHC(P)
IHC(P): Rat Brain Tissue

Submit a product review to Biocompare.com

Submit a review of this product to Biocompare.com to receive a \$20 Amazon giftcard! Your reviews help your fellow scientists make the right decisions. Thank you for your contribution.

