

Anti-Pan cytokeratin Antibody (Monoclonal, PCK-26)

Catalog Number: MA1082

About Krt8

Monoclonal anti cytokeratins are specific markers of epithelial cell differentiation and have been widely used as tools in tumor identification and classification. Monoclonal Anti Pan Cytokeratin (mixture) is a broadly reactive reagent, which recognizes epitopes present in most human epithelial tissues.

Overview

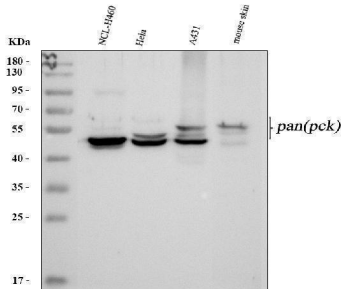
Product Name	Anti-Pan cytokeratin Antibody (Monoclonal, PCK-26)
Reactive Species	Human, Mouse
Description	Boster Bio Anti-Pan cytokeratin Antibody (Monoclonal, PCK-26) catalog # MA1082. Tested in IF, IHC, WB applications. This antibody reacts with Human, Mouse.
Application	IF, IHC, WB
Clonality	Monoclonal PCK-26
Formulation	Mouse IgG in stabilizing components, 1.2% sodium acetate and 0.01mg NaN ₃ .
Storage Instructions	Store at -20°C for one year from date of receipt. After reconstitution, at 4°C for one month. It can also be aliquotted and stored frozen at -20°C for six months. Avoid repeated freeze-thaw cycles.
Host	Mouse
Uniprot ID	Q10758

Technical Details

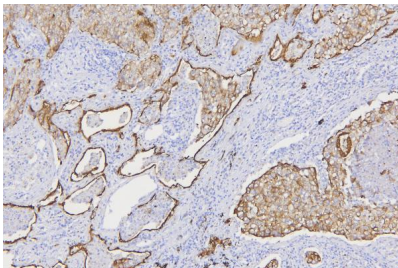
Immunogen	Cytokeratin from human epidermis.
Recommended Detection Systems	Boster recommends Enhanced Chemiluminescent Kit with anti-Mouse IgG (EK1001) for Western blot, and HRP Conjugated anti-Mouse IgG Super Vision Assay Kit (SV0001-1) for IHC(P).
Cross Reactivity	No cross-reactivity with other proteins
Isotype	Mouse IgG1
Form	Lyophilized
Concentration	Adding 1 ml of PBS buffer will yield a concentration of 100 ug/ml.
Purification	Ascites
Suggested Dilutions	Western blot, 0.5-1ug/ml, Human, mouse Immunohistochemistry (Paraffin-embedded Section), 1-2ug/ml, Human

Immunofluorescence, 1-2ug/ml, Human, -

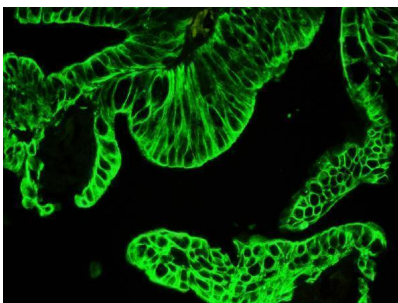
Anti-Pan cytokeratin Antibody (Monoclonal, PCK-26) (MA1082) Images



Western blot analysis of Pan cytokeratin using anti-Pan cytokeratin antibody (MA1082). Electrophoresis was performed on a 5-20% SDS-PAGE gel at 70V (Stacking gel) / 90V (Resolving gel) for 2-3 hours. The sample well of each lane was loaded with 30 ug of sample under reducing conditions. Lane 1: human NCL-H460 whole cell lysates, Lane 2: human Hela whole cell lysates, Lane 3: human A431 whole cell lysates, Lane 4: mouse skin tissue lysates. After electrophoresis, proteins were transferred to a nitrocellulose membrane at 150 mA for 50-90 minutes. Blocked the membrane with 5% non-fat milk/TBS for 1.5 hour at RT. The membrane was incubated with mouse anti-Pan cytokeratin antigen affinity purified monoclonal antibody (Catalog # MA1082) at 1 ug/mL overnight at 4°C, then washed with TBS-0.1%Tween 3 times with 5 minutes each and probed with a goat anti-mouse IgG-HRP secondary antibody at a dilution of 1:10000 for 1.5 hour at RT. The signal is developed using an Enhanced Chemiluminescent detection (ECL) kit (Catalog # EK1001) with Tanon 5200 system. A specific band was detected for Pan cytokeratin at approximately 54 kDa. The expected band size for Pan cytokeratin is at 54 kDa.



IHC analysis of Pan cytokeratin using anti-Pan cytokeratin antibody (MA1082). Pan cytokeratin was detected in a paraffin-embedded section of human lung cancer tissue. Heat mediated antigen retrieval was performed in EDTA buffer (pH 8.0, epitope retrieval solution). The tissue section was blocked with 10% goat serum. The tissue section was then incubated with 1 ug/ml mouse anti-Pan cytokeratin Antibody (MA1082) overnight at 4°C. Peroxidase Conjugated Goat Anti-mouse IgG was used as secondary antibody and incubated for 30 minutes at 37°C. The tissue section was developed using HRP Conjugated Mouse IgG Super Vision Assay Kit (Catalog # SV0001) with DAB as the chromogen.



IF analysis of Pan cytokeratin using anti-Pan cytokeratin antibody (MA1082). Pan cytokeratin was detected in a paraffin-embedded section of human intestine cancer tissue. Heat mediated antigen retrieval was performed in EDTA buffer (pH 8.0, epitope retrieval solution). The tissue section was blocked with 10% goat serum. The tissue section was then incubated with 2 ug/mL mouse anti-Pan cytokeratin Antibody (MA1082) overnight at 4°C. Biotin conjugated goat anti-mouse IgG (BA1001) was used as secondary antibody at 1: 500 and incubated for 30 minutes at 37°C. The tissue section was developed using DyLight®488 Conjugated Avidin (BA1128). The section was counterstained with DAPI. Visualize using a fluorescence microscope and filter sets appropriate for the label used.

Submit a review of this product to Biocompare.com to receive a \$20 Amazon.com giftcard! Your reviews help your fellow scientists make the right decisions. Thank you for your contribution.



Anti-Pan cytokeratin Antibody (Monoclonal, PCK-26)

For Research Use Only. Not for use in diagnostic procedures.