

Anti-S-100(Beta-subunit) S100b Antibody (Monoclonal, SH-B1)

Catalog Number: MA1088

About S100b

S100 protein is a 21,000-Da component first isolated from brain by Moore (1965). Immunocytochemical studies demonstrated that S100 protein is produced by a wide variety of normal and neoplastic cells of mesodermal, neuroectodermal, and epithelial origin (Herrera et al., 1988). The S100 molecule is a dimer; thus there are 3 forms of S100: alpha-alpha, known as S-100a (0); alpha-beta, known as S-100a; and beta-beta, known as S-100b. S100 genes are clustered on human chromosome 1q21. S-100 protein expression by primary and metastatic adenocarcinomas.

Overview

Product Name	Anti-S-100(Beta-subunit) S100b Antibody (Monoclonal, SH-B1)
Reactive Species	Human, Rabbit, Rat
Description	Boster Bio Anti-S-100 (Beta-subunit) S100b Antibody (Monoclonal, SH-B1) catalog # MA1088. Tested in IHC applications. This antibody reacts with Human, Rabbit, Rat.
Application	IHC
Clonality	Monoclonal SH-B1
Formulation	Mouse ascites fluid, 1.2% sodium acetate, 2mg BSA, with 0.01mg NaN ₃ as preservative.
Storage Instructions	Store at -20°C for one year from date of receipt. After reconstitution, at 4°C for one month. It can also be aliquotted and stored frozen at -20°C for six months. Avoid repeated freeze-thaw cycles.
Host	Mouse
Uniprot ID	P04631

Technical Details

Immunogen	Bovine brain S-100b.
Predicted Reactive Species	Horse, Monkey, Rabbit
Recommended Detection Systems	Boster recommends Enhanced Chemiluminescent Kit with anti-Mouse IgG (EK1001) for Western blot, and HRP Conjugated anti-Mouse IgG Super Vision Assay Kit (SV0001-1) for IHC(P).
Cross Reactivity	No cross-reactivity with other proteins
Isotype	Mouse IgG1
Form	Lyophilized
Concentration	Adding 1 ml of PBS buffer will yield a concentration of 100 µg/ml.
Purification	Ascites

Suggested Dilutions

Dilute the sample so that the expected range of concentrations fall within the detection range of this kit.

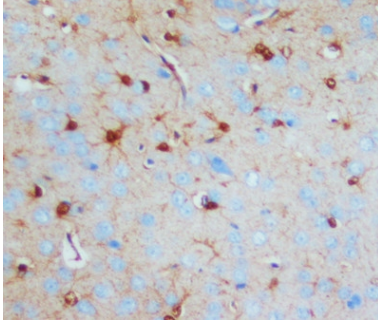
If the expected range of concentration is unknown, a pilot test should be conducted to decide the optimal dilution ratio for your samples.

Some PubMed article(s) citing the expression level of this target are as follows:

Boster Bio's internal QC testing used Immunohistochemistry (Paraffin-embedded Section), 1-2 μ g/ml, Human, rabbit, rat, By Heat

For protocols, please visit <https://www.bosterbio.com/protocol-and-troubleshooting/>

Anti-S-100(Beta-subunit) S100b Antibody (Monoclonal, SH-B1) (MA1088) Images



Anti-S-100(beta-subunit) antibody (monoclonal), MA1088,
IHC(P)
IHC(P): Rat Brain Tissue Lysate

37 Publications Citing This Product

1. PubMed ID: 16586547, Xie Zj, Jia Lm, He Yc, Gao Jt. World J Gastroenterol. 2006 Mar 21;12(11):1757-60. Morphological Observation Of Tumor Infiltrating Immunocytes In Human Rectal Cancer.
2. PubMed ID: 23346371, Huang J, Zhu C, Zhang P, Zhu Q, Liu Y, Zhu Z, Wang M, Li W, Yang G, Dong N, Liu J, Chen L, Zhang Y, Yang R, Deng L, Fan J, Wang X, Liu J, Ma B, Fu Q, Wu K. Sci Rep. 2013;3:1114. Doi: 10.1038/Srep01114. Epub 2013 Jan 23. S100+ Cells: A New Neuro-Im...
3. PubMed ID: 20875681, Zhang C, Peng Y, Wang F, Tan X, Liu N, Fan S, Wang D, Zhang L, Liu D, Wang T, Wang S, Zhou Y, Su Y, Cheng T, Zhuang Z, Shi C. Biomaterials. 2010 Dec;31(36):9535-43. Doi: 10.1016/J.Biomaterials.2010.08.059. Epub 2010 Sep 26. A Synthetic Cantharidin...

Visit bosterbio.com/anti-s-100-beta-subunit-antibody-monoclonal-ma1088-boster.html to see all 37 publications.

Submit a product review to Biocompare.com

Submit a review of this product to Biocompare.com to receive a \$20 Amazon.com giftcard! Your reviews help your fellow scientists make the right decisions. Thank you for your contribution.



Anti-S-100(Beta-subunit) S100b Antibody (Monoclonal, SH-B1)