

Anti-Synaptophysin Syp Antibody (Monoclonal, SVP-38)

Catalog Number: MA1091

About Syp

Synaptophysin (SYP) is an integral membrane protein of small synaptic vesicles in brain and endocrine cells. Ozcelik et al. (1990) concluded that the gene has 7 exons distributed over about 20 kb. SYP mapped the SYP locus to Xp11.23-p11.22. Regionalization of the gene on the X chromosome was also done with hamster/human hybrid cells in which various portions of the human X chromosome were present.

Overview

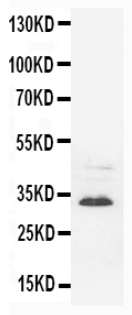
Product Name	Anti-Synaptophysin Syp Antibody (Monoclonal, SVP-38)
Reactive Species	Human, Rat
Description	Boster Bio Anti-Synaptophysin Syp Antibody (Monoclonal, SVP-38) catalog # MA1091. Tested in IHC, WB applications. This antibody reacts with Human, Rat.
Application	IHC, WB
Clonality	Monoclonal SVP-38
Formulation	Mouse IgG in stabilizing components, 1.2% sodium acetate and 0.01mg NaN ₃ .
Storage Instructions	Store at -20°C for one year from date of receipt. After reconstitution, at 4°C for one month. It can also be aliquotted and stored frozen at -20°C for six months. Avoid repeated freeze-thaw cycles.
Host	Mouse
Uniprot ID	P07825

Technical Details

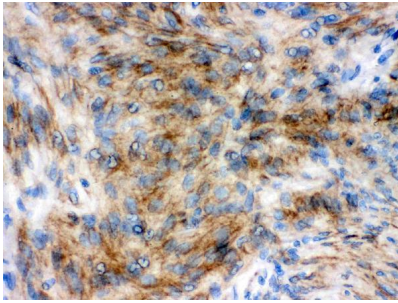
Immunogen	Rat retina synaptosome.
Recommended Detection Systems	Boster recommends Enhanced Chemiluminescent Kit with anti-Mouse IgG (EK1001) for Western blot, and HRP Conjugated anti-Mouse IgG Super Vision Assay Kit (SV0001-1) for IHC(P) and IHC(F).
Cross Reactivity	No cross-reactivity with other proteins
Isotype	Mouse IgG1
Form	Lyophilized
Concentration	Adding 1 ml of PBS buffer will yield a concentration of 100 ug/ml.
Purification	Ascites
Suggested Dilutions	Immunohistochemistry (Paraffin-embedded Section), 1-2ug/ml, Human, rat Immunohistochemistry (Frozen Section), 1-2ug/ml, Human, rat, -

Western blot, 0.5-1ug/ml, Human, rat

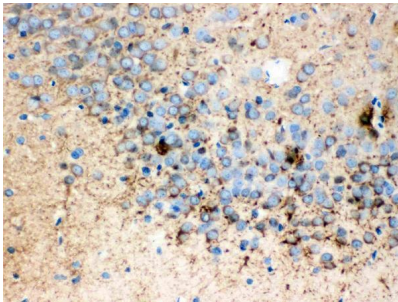
Anti-Synaptophysin Syp Antibody (Monoclonal, SVP-38) (MA1091) Images



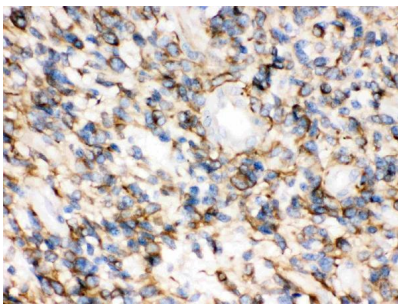
Anti-Synaptophysin antibody (monoclonal), MA1091,
Western blottingWB: Rat Brain Tissue Lysate



Anti-Synaptophysin antibody (monoclonal), MA1091,
IHC(P)IHC(P): Human meningeoma Tissue



Anti-Synaptophysin antibody (monoclonal), MA1091,
IHC(P)IHC(P): Rat Brain Tissue



Anti-Synaptophysin antibody (monoclonal), MA1091,
IHC(P)IHC(P): Human Glioma Tissue

5 Publications Citing This Product

1. PubMed ID: 33335999, Jing M, Yi Y, Jinniu Z, Xiuli K, Jianxian W. Rehabilitation training improves nerve injuries by affecting Notch1 and SYN. Open Med (Wars). 2020 May 15;15(1):387-395. doi:10.1515/med-2020-0045. PMID:33335999; PMCID:PMC7712290.
2. PubMed ID: 33531914, Lin J, Hao C, Gong Y, Zhang Y, Li Y, Feng Z, Xu X, Huang H, Liao W. Effect of Tetramethylpyrazine on Neuroplasticity after Transient Focal Cerebral Ischemia Reperfusion in Rats. Evid Based Complement Alternat Med. 2021 Jan 18;2021:1587241. doi:10.1155/2021/1587241

3. PubMed ID: 25206583, Liu Y, Liang Z, Liu J, Zou W, Li X, Wang Y, An L. Neural Regen Res. 2013 Oct 15;8(29):2725-33. Doi: 10.3969/J.Issn.1673-5374.2013.29.004. Downregulation Of Caveolin-1 Contributes To The Synaptic Plasticity Deficit In The Hippocampus Of Aged Rats.

Visit bosterbio.com/anti-synaptophysin-antibody-monoclonal-ma1091-boster.html to see all 5 publications.

Submit a product review to Biocompare.com

Submit a review of this product to Biocompare.com to receive a \$20 Amazon.com giftcard! Your reviews help your fellow scientists make the right decisions. Thank you for your contribution.



Anti-Synaptophysin Syp Antibody (Monoclonal, SVP-38)

For Research Use Only. Not for use in diagnostic procedures.