

Anti-Tropomyosin(36/39 kDa) Tpm1 Antibody (Monoclonal, TM31)

Catalog Number: MA1095

About Tpm1

The tropomyosins are a family of actin filament binding proteins. These proteins were first isolated from skeletal muscle, but later identified in many nonmuscle tissues. Tropomyosins are ubiquitous proteins of 35 to 45 kD associated with the actin filaments of myofibrils and stress fibers. Vertebrates have at least 4 different tropomyosin genes; in humans, they are named TPM1, TPM2, TPM3, and TPM4. Tropomyosins expressed as different isoforms in muscle and non-muscle cells.

Overview

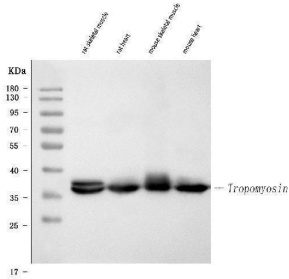
Product Name	Anti-Tropomyosin(36/39 kDa) Tpm1 Antibody (Monoclonal, TM31)
Reactive Species	Chicken, Human, Mouse, Rat
Description	Boster Bio Anti-Tropomyosin (36/39 kDa) Tpm1 Antibody (Monoclonal, TM31) catalog # MA1095. Tested in WB applications. This antibody reacts with Chicken, Human, Mouse, Rat.
Application	WB
Clonality	Monoclonal TM31
Formulation	Mouse IgG in stabilizing components, 1.2% sodium acetate and 0.01mg NaN ₃ .
Storage Instructions	Store at -20°C for one year from date of receipt. After reconstitution, at 4°C for one month. It can also be aliquotted and stored frozen at -20°C for six months. Avoid repeated freeze-thaw cycles.
Host	Mouse
Uniprot ID	P04692

Technical Details

Immunogen	Chicken gizzard tropomyosin.
Recommended Detection Systems	Boster recommends Enhanced Chemiluminescent Kit with anti-Mouse IgG (EK1001) for Western blot.
Cross Reactivity	No cross-reactivity with other proteins
Isotype	Mouse IgG1
Form	Lyophilized
Concentration	Adding 1 ml of PBS buffer will yield a concentration of 100 ug/ml.
Purification	Ascites
Suggested Dilutions	Western blot, 0.5-1ug/ml, Human, mouse, rat, chicken

--	--

Anti-Tropomyosin(36/39 kDa) Tpm1 Antibody (Monoclonal, TM31) (MA1095) Images



Western blot analysis of Tropomyosin(36/39kDa) using anti-Tropomyosin(36/39kDa) antibody (MA1095). Electrophoresis was performed on a 5-20% SDS-PAGE gel at 70V (Stacking gel) / 90V (Resolving gel) for 2-3 hours. The sample well of each lane was loaded with 30 ug of sample under reducing conditions. Lane 1: rat skeletal muscle tissue lysates, Lane 2: rat heart tissue lysates, Lane 3: mouse skeletal muscle tissue lysates, Lane 4: mouse heart tissue lysates. After electrophoresis, proteins were transferred to a nitrocellulose membrane at 150 mA for 50-90 minutes. Blocked the membrane with 5% non-fat milk/TBS for 1.5 hour at RT. The membrane was incubated with mouse anti-Tropomyosin(36/39kDa) antigen affinity purified monoclonal antibody (Catalog # MA1095) at 1 ug/mL overnight at 4°C, then washed with TBS-0.1%Tween 3 times with 5 minutes each and probed with a goat anti-mouse IgG-HRP secondary antibody at a dilution of 1:10000 for 1.5 hour at RT. The signal is developed using an Enhanced Chemiluminescent detection (ECL) kit (Catalog # EK1001) with Tanon 5200 system. A specific band was detected for Tropomyosin(36/39kDa) at approximately 35-45 kDa. The expected band size for Tropomyosin(36/39kDa) is at 33 kDa.

Submit a product review to [Biocompare.com](https://www.biocompare.com)

Submit a review of this product to [Biocompare.com](https://www.biocompare.com) to receive a \$20 Amazon.com giftcard! Your reviews help your fellow scientists make the right decisions. Thank you for your contribution.



Anti-Tropomyosin(36/39 kDa) Tpm1 Antibody (Monoclonal, TM31)

For Research Use Only. Not for use in diagnostic procedures.