

## Anti-Alpha-Adaptin AP2A1 Antibody (Monoclonal, 100/2)

Catalog Number: MA1105

### About AP2A1

Alpha Adaptin, also known as adaptor related protein complex, alpha 1 subunit. The alpha adaptins are exclusively found in the endocytic coated vesicles. Huntingtin-interacting protein 1 (HIP1) is enriched in membrane-containing cell fractions and has been implicated in vesicle trafficking. Waelter et al. (2001) identified 3 HIP1-associated proteins, clathrin heavy chain (CLTC) and alpha-adaptin A and C. Coat proteins of approximately 100-kD (adaptins) are components of the adaptor complexes which link clathrin to receptors in coated vesicles. The alpha-adaptins separate into two bands on SDS gels.

### Overview

Product Name	Anti-Alpha-Adaptin AP2A1 Antibody (Monoclonal, 100/2)
Reactive Species	Human, Mouse, Rat
Description	Boster Bio Anti-Alpha-Adaptin AP2A1 Antibody (Monoclonal, 100/2) catalog # MA1105. Tested in WB applications. This antibody reacts with Human, Mouse, Rat.
Application	WB
Clonality	Monoclonal 100/2
Formulation	Mouse IgG in stabilizing components, 1.2% sodium acetate and 0.01mg NaN <sub>3</sub> .
Storage Instructions	Store at -20°C for one year from date of receipt. After reconstitution, at 4°C for one month. It can also be aliquotted and stored frozen at -20°C for six months. Avoid repeated freeze-thaw cycles.
Host	Mouse
Uniprot ID	D3ZUY8

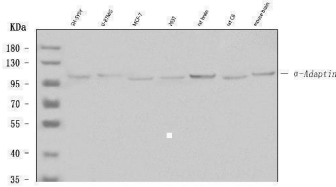
### Technical Details

Immunogen	AP-2 adaptor polypeptides from bovine brain.
Recommended Detection Systems	Boster recommends Enhanced Chemiluminescent Kit with anti-Mouse IgG (EK1001) for Western blot.
Cross Reactivity	No cross-reactivity with other proteins
Isotype	Mouse IgG2a
Form	Lyophilized
Concentration	Adding 1 ml of PBS buffer will yield a concentration of 100 ug/ml.
Purification	Ascites

Suggested Dilutions

Western blot, 0.5-1ug/ml, Human, mouse, rat

## Anti-Alpha-Adaptin AP2A1 Antibody (Monoclonal, 100/2) (MA1105) Images



Western blot analysis of alpha-Adaptin using anti-alpha-Adaptin antibody (MA1105). Electrophoresis was performed on a 5-20% SDS-PAGE gel at 70V (Stacking gel) / 90V (Resolving gel) for 2-3 hours. The sample well of each lane was loaded with 30 ug of sample under reducing conditions. Lane 1: human SH-SY5Y whole cell lysates, Lane 2: human U-87MG whole cell lysates, Lane 3: human MCF-7 whole cell lysates, Lane 4: human 293T whole cell lysates, Lane 5: rat brain tissue lysates, Lane 6: rat C6 whole cell lysates, Lane 7: mouse brain tissue lysates. After electrophoresis, proteins were transferred to a nitrocellulose membrane at 150 mA for 50-90 minutes. Blocked the membrane with 5% non-fat milk/TBS for 1.5 hour at RT. The membrane was incubated with mouse anti-alpha-Adaptin antigen affinity purified monoclonal antibody (Catalog # MA1105) at 1 ug/mL overnight at 4°C, then washed with TBS-0.1%Tween 3 times with 5 minutes each and probed with a goat anti-mouse IgG-HRP secondary antibody at a dilution of 1:10000 for 1.5 hour at RT. The signal is developed using an Enhanced Chemiluminescent detection (ECL) kit (Catalog # EK1001) with Tanon 5200 system. A specific band was detected for alpha-Adaptin at approximately 108 kDa. The expected band size for alpha-Adaptin is at 108 kDa.

### Submit a product review to [Biocompare.com](https://www.biocompare.com)

Submit a review of this product to [Biocompare.com](https://www.biocompare.com) to receive a \$20 Amazon.com giftcard! Your reviews help your fellow scientists make the right decisions. Thank you for your contribution.



Anti-Alpha-Adaptin AP2A1 Antibody (Monoclonal, 100/2)

For Research Use Only. Not for use in diagnostic procedures.