

Anti-Phospho-SMC1 (S957) Monoclonal Antibody

Catalog Number: MP02148

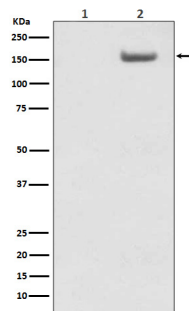
Overview

Product Name	Anti-Phospho-SMC1 (S957) Monoclonal Antibody
Reactive Species	Human
Description	Boster Bio Anti-Phospho-SMC1 (S957) Monoclonal Antibody catalog # MP02148. Tested in WB, IHC, ICC/IF applications. This antibody reacts with Human.
Application	IF, IHC, ICC, WB
Clonality	Monoclonal FCI-19
Formulation	Rabbit IgG in stabilizing components, phosphate buffered saline, pH 7.4, 150mM NaCl, 0.02% sodium azide and 50% glycerol. *This antibody is supplied in a stabilized formulation. Compatibility with conjugation reactions depends on the chemistry of the conjugation method used. For conjugation methods that are not compatible with the stabilizing components present in this formulation, a carrier-free antibody format is required.
Storage Instructions	Store at -20°C for one year. For short term storage and frequent use, store at 4°C for up to one month. Avoid repeated freeze-thaw cycles.
Host	Rabbit
Uniprot ID	Q14683

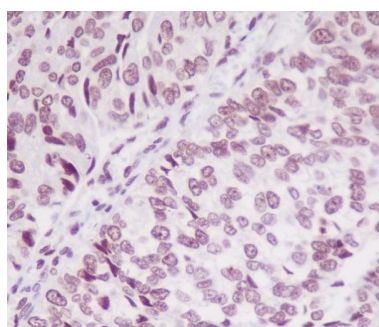
Technical Details

Immunogen	A synthesized peptide derived from human Phospho-SMC1 (S957) Structural maintenance of chromosomes 1 (SMC1) protein is a chromosomal protein member of the cohesin complex that enables sister chromatid cohesion and plays a role in DNA repair . ATM/NBS1-dependent phosphorylation of SMC1 occurs at Ser957 and Ser966 in response to ionizing radiation (IR) as part of the intra-S-phase DNA damage checkpoint. SMC1 phosphorylation is ATM-independent in cells subjected to other forms of DNA damage, including UV light and hydroxyurea treatment.
Isotype	Rabbit IgG
Form	Liquid
Concentration	0.5mg/ml
Purification	Affinity-chromatography
Suggested Dilutions	WB 1:500-2000 IHC 1:50-200 ICC/IF 1:50-200

Anti-Phospho-SMC1 (S957) Monoclonal Antibody (MP02148) Images



Western blot analysis of Phospho-SMC1 (S957) expression in (1) HeLa cell lysate; (2) HeLa cells lysate treated with AP.



Immunohistochemical analysis of paraffin-embedded human bladder cancer, using Phospho-SMC1 (S957) Antibody.

Submit a product review to [Biocompare.com](https://www.biocompare.com)

Submit a review of this product to [Biocompare.com](https://www.biocompare.com) to receive a \$20 Amazon.com giftcard! Your reviews help your fellow scientists make the right decisions. Thank you for your contribution.



Anti-Phospho-SMC1 (S957) Monoclonal Antibody

For Research Use Only. Not for use in diagnostic procedures.