

## Anti-Firefly Luciferase Rabbit Monoclonal Antibody

Catalog Number: MT0021-1

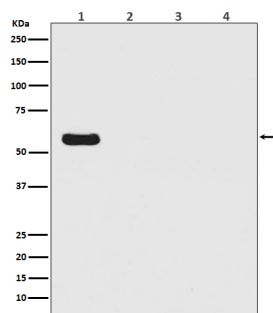
### Overview

Product Name	Anti-Firefly Luciferase Rabbit Monoclonal Antibody
Reactive Species	Firefly
Description	Boster Bio Anti-Firefly Luciferase Rabbit Monoclonal Antibody catalog # MT0021-1. Tested in WB, ICC/IF applications. This antibody reacts with Firefly.
Application	IF, ICC, WB
Clonality	Monoclonal DAA-6
Formulation	Rabbit IgG in stabilizing components, phosphate buffered saline, pH 7.4, 150mM NaCl, 0.02% sodium azide and 50% glycerol. *This antibody is supplied in a stabilized formulation. Compatibility with conjugation reactions depends on the chemistry of the conjugation method used. For conjugation methods that are not compatible with the stabilizing components present in this formulation, a carrier-free antibody format is required.
Storage Instructions	Store at -20°C for one year. For short term storage and frequent use, store at 4°C for up to one month. Avoid repeated freeze-thaw cycles.
Host	Rabbit
Uniprot ID	P08659

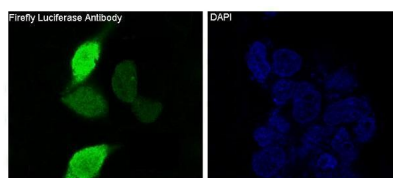
### Technical Details

Immunogen	A synthesized peptide derived from Firefly Luciferase
Isotype	Rabbit IgG
Form	Liquid
Concentration	0.5mg/ml
Purification	Affinity-chromatography
Suggested Dilutions	WB 1:500-1:2000 ICC/IF 1:50-1:200

## Anti-Firefly Luciferase Rabbit Monoclonal Antibody (MT0021-1) Images



Western blot analysis of Firefly Luciferase Antibody - N-terminal expression in (1) Firefly Luciferase transfected 293T cell lysate; (2) HeLa cell lysate; (3) NIH/3T3 cell lysate; (4) C6 cell lysate.



Immunofluorescent analysis of 293 cells transfected with Firefly Luciferase, using Firefly Luciferase Antibody .

### Submit a product review to [Biocompare.com](https://www.biocompare.com)

Submit a review of this product to [Biocompare.com](https://www.biocompare.com) to receive a \$20 Amazon.com giftcard! Your reviews help your fellow scientists make the right decisions. Thank you for your contribution.



Anti-Firefly Luciferase Rabbit Monoclonal Antibody

For Research Use Only. Not for use in diagnostic procedures.