

## Anti-Phospho-p53 (S392) TP53 Rabbit Monoclonal Antibody

Catalog Number: P00001-6

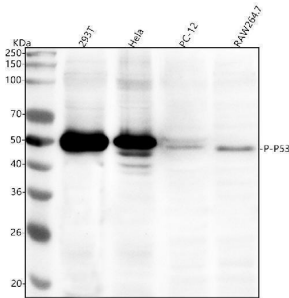
### Overview

Product Name	Anti-Phospho-p53 (S392) TP53 Rabbit Monoclonal Antibody
Reactive Species	Human, Mouse, Rat
Description	Boster Bio Anti-Phospho-p53 (S392) TP53 Rabbit Monoclonal Antibody catalog # P00001-6. Tested in WB, IHC, ICC/IF, IP applications. This antibody reacts with Human, Mouse, Rat.
Application	IP, IF, IHC, ICC, WB
Clonality	Monoclonal BDO-20
Formulation	Rabbit IgG in stabilizing components, phosphate buffered saline, pH 7.4, 150mM NaCl, 0.02% sodium azide and 50% glycerol. *This antibody is supplied in a stabilized formulation. Compatibility with conjugation reactions depends on the chemistry of the conjugation method used. For conjugation methods that are not compatible with the stabilizing components present in this formulation, a carrier-free antibody format is required.
Storage Instructions	Store at -20°C for one year. For short term storage and frequent use, store at 4°C for up to one month. Avoid repeated freeze-thaw cycles.
Host	Rabbit
Uniprot ID	P04637

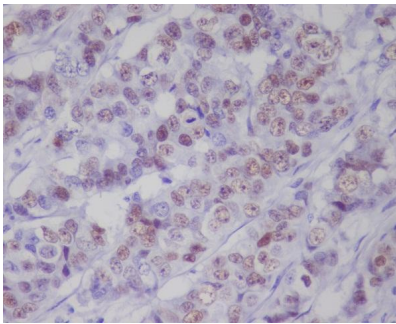
### Technical Details

Immunogen	A synthesized peptide derived from human Phospho-p53 (S392)
Isotype	Rabbit IgG
Form	Liquid
Concentration	0.5mg/ml
Purification	Affinity-chromatography
Suggested Dilutions	WB 1:500-2000 IHC 1:50-200 ICC/IF 1:50-200 IP 1:20

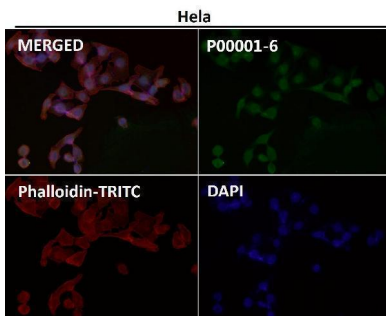
## Anti-Phospho-p53 (S392) TP53 Rabbit Monoclonal Antibody (P00001-6) Images



Western blot analysis of p53 using anti-p53 antibody (P00001-6). Electrophoresis was performed on a 5-20% SDS-PAGE gel at 70V (Stacking gel) / 90V (Resolving gel) for 2-3 hours. The sample well of each lane was loaded with 30 ug of sample under reducing conditions. Lane 1: human 293T whole cell lysates, Lane 2: human HeLa whole cell lysates, Lane 3: rat PC-12 whole cell lysates, Lane 4: mouse RAW264.7 whole cell lysates. After electrophoresis, proteins were transferred to a nitrocellulose membrane at 150 mA for 50-90 minutes. Blocked the membrane with 5% non-fat milk/TBS for 1.5 hour at RT. The membrane was incubated with rabbit anti-p53 antigen affinity purified monoclonal antibody (Catalog # P00001-6) at 1:500 overnight at 4°C, then washed with TBS-0.1%Tween 3 times with 5 minutes each and probed with a goat anti-rabbit IgG-HRP secondary antibody at a dilution of 1:500 for 1.5 hour at RT. The signal is developed using an Enhanced Chemiluminescent detection (ECL) kit (Catalog # EK1002) with Tanon 5200 system. A specific band was detected for p53 at approximately 53 kDa. The expected band size for p53 is at 44 kDa.



Immunohistochemical analysis of paraffin-embedded human breast, using Phospho-p53 (S392) Antibody.



Immunofluorescent analysis using the Antibody at 1:150 dilution.

## 15 Publications Citing This Product

1. PubMed ID: 25395712, Li W, Wu D, Wei B, Wang S, Sun H, Li X, Zhang F, Zhang C, Xin Y. Afr J Tradit Complement Altern Med. 2014 Aug 23;11(5):99-104. Ecollection 2014. Anti-Tumor Effect Of Cactus Polysaccharides On Lung Squamous Carcinoma Cells (Sk-Mes-1).
2. PubMed ID: 26137081, Lactotransferrin expression is downregulated and affects the mitogen-activated protein kinase pathway in gastric cancer

3. PubMed ID: 18477410, Suspension culture combined with chemotherapeutic agents for sorting of breast cancer stem cells

Visit [bosterbio.com/anti-phospho-p53-s392-rabbit-monoclonal-antibody-p00001-6-boster.html](https://bosterbio.com/anti-phospho-p53-s392-rabbit-monoclonal-antibody-p00001-6-boster.html) to see all 15 publications.

## Submit a product review to Biocompare.com

Submit a review of this product to Biocompare.com to receive a \$20 Amazon.com giftcard! Your reviews help your fellow scientists make the right decisions. Thank you for your contribution.



Anti-Phospho-p53 (S392) TP53 Rabbit Monoclonal Antibody

For Research Use Only. Not for use in diagnostic procedures.