

## Anti-Phospho-Stat3 (Tyr705) Rabbit Monoclonal Antibody, Clone#RM261

Catalog Number: P00007-3

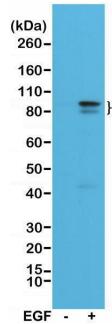
### Overview

Product Name	Anti-Phospho-Stat3 (Tyr705) Rabbit Monoclonal Antibody, Clone#RM261
Reactive Species	Human
Description	Boster Bio Anti-Phospho-Stat3 (Tyr705) Rabbit Monoclonal Antibody, Clone#RM261 (Catalog # P00007-3). Tested in IHC, WB applications. This antibody reacts with Human.
Application	IHC, WB
Clonality	Monoclonal RM261
Formulation	50% Glycerol/PBS with 1% stabilizing protein and 0.09% sodium azide This antibody is supplied in a stabilized formulation. Compatibility with conjugation reactions depends on the chemistry of the conjugation method used. For conjugation methods that are not compatible with the stabilizing components present in this formulation, a carrier-free antibody format is required.
Storage Instructions	Store at -20°C for one year. Avoid repeated freeze-thaw cycles.
Host	Rabbit
Uniprot ID	P40763

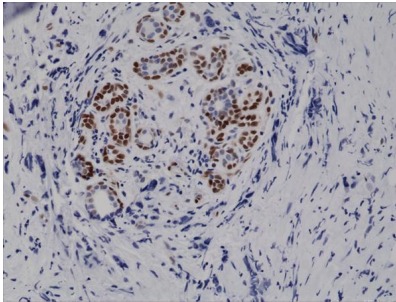
### Technical Details

Immunogen	A phospho-peptide corresponding to human Phospho- Stat3 (Tyr705)
Predicted Reactive Species	Mouse, Rat
Cross Reactivity	This antibody reacts to human Stat3 only when phosphorylated at Tyr705. There is no cross-reactivity to stat3 without phosphorylation at Tyr705. This antibody may also react to mouse or rat Phospho-Stat3 (Tyr705), as predicted by immunogen homology.
Isotype	Rabbit IgG
Form	Liquid
Concentration	0.5-1mg/ml, actual concentration vary by lot. Use suggested dilution ratio to decide dilution procedure.
Purification	Protein A affinity purified from an animal origin-free culture supernatant
Suggested Dilutions	Immunohistochemistry (IHC): 1:1000-1:10,000 dilution WB: 1:1000-1:2000 dilution.

## Anti-Phospho-Stat3 (Tyr705) Rabbit Monoclonal Antibody, Clone#RM261 (P00007-3) Images



Western Blotting result Western Blot of A431 cell lysates, nontreated (-) or treated (+) with EGF, using Anti-Phospho-Stat3 (Tyr705) Rabbit Monoclonal Antibody (clone RM261) at a 1:1000 dilution, showed Phospho-Stat3 (Tyr705) in EGF-treated A431 cells.



IHC result Immunohistochemical staining of formalin fixed and paraffin embedded human breast cancer tissue sections using Anti-Phospho-Stat3 (Tyr705) Rabbit Monoclonal Antibody (clone RM261) at a 1:10,000 dilution.

## 2 Publications Citing This Product

1. PubMed ID: 26549519, IL-6 Inhibits Starvation-induced Autophagy via the STAT3/Bcl-2 Signaling Pathway
2. PubMed ID: 28065778, Protective effects of Tongxinluo on cerebral ischemia/reperfusion injury related to Connexin 43/Calpain II/Bax/Caspase-3 pathway in rat

Visit [bosterbio.com/anti-phospho-stat3-tyr705-rabbit-monoclonal-antibody-clone-rm261-p00007-3-boster.html](http://bosterbio.com/anti-phospho-stat3-tyr705-rabbit-monoclonal-antibody-clone-rm261-p00007-3-boster.html) to see all 2 publications.

## Submit a product review to Biocompare.com

Submit a review of this product to Biocompare.com to receive a \$20 Amazon.com giftcard! Your reviews help your fellow scientists make the right decisions. Thank you for your contribution.



Anti-Phospho-Stat3 (Tyr705) Rabbit Monoclonal Antibody, Clone#RM261

For Research Use Only. Not for use in diagnostic procedures.