

Anti-Phospho-EGFR (Y1092) Rabbit Monoclonal Antibody

Catalog Number: P00023-3

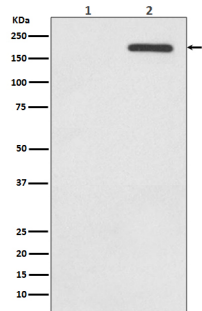
Overview

Product Name	Anti-Phospho-EGFR (Y1092) Rabbit Monoclonal Antibody
Reactive Species	Human
Description	Boster Bio Anti-Phospho-EGFR (Y1092) Rabbit Monoclonal Antibody catalog # P00023-3. Tested in WB, ICC/IF, IP, Flow Cytometry applications. This antibody reacts with Human.
Application	Flow Cytometry, IP, IF, ICC, WB
Clonality	Monoclonal HOF-5
Formulation	Rabbit IgG in stabilizing components, phosphate buffered saline, pH 7.4, 150mM NaCl, 0.02% sodium azide and 50% glycerol. *This antibody is supplied in a stabilized formulation. Compatibility with conjugation reactions depends on the chemistry of the conjugation method used. For conjugation methods that are not compatible with the stabilizing components present in this formulation, a carrier-free antibody format is required.
Storage Instructions	Store at -20°C for one year. For short term storage and frequent use, store at 4°C for up to one month. Avoid repeated freeze-thaw cycles.
Host	Rabbit
Uniprot ID	P00533

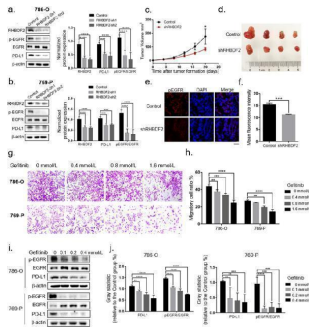
Technical Details

Immunogen	A synthesized peptide derived from human EGFR Full-length sequence 1210aa around the phosphorylation site of Tyrosine 1092
Isotype	Rabbit IgG
Form	Liquid
Concentration	0.5mg/ml
Purification	Affinity-chromatography
Suggested Dilutions	WB 1:500-2000 ICC/IF 1:50-200 IP 1:20 FC 1:20

Anti-Phospho-EGFR (Y1092) Rabbit Monoclonal Antibody (P00023-3) Images



Western blot analysis of Phospho-EGFR (Y1092) expression in (1) A431 cell lysate; (2) A431 cell treated with EGF lysate.



RHBDF2 related functions were mediated by EGFR signaling pathway. a , b Phosphorylation of EGFR and PD-L1 protein level in 786-O and 769-P cells were detected by western blot. Significance testing of gray statistics was analyzed by two-way ANOVA. c Growth rate of the transplanted tumor in the control group and RHBDF2 knockdown group (data were presented as the mean \pm SEM and subjected to two-way ANOVA for significance test). d Representative images of xenografts in nude mice. e Immunofluorescent staining of phosphorylation of EGFR in the graft sections (The horizontal line at the bottom right represents 50 microns). f The mean fluorescence intensity of the phosphorylation staining of EGFR in the graft sections (t-test). g The migratory ability testing of 786-O cells and 769-P cells after Gefitinib treatment. h Statistics of the cell migratory ability after Gefitinib treatment (two-way ANOVA). i The detection of pEGFR and PD-L1 level in 786-O and 769-P cells after Gefitinib treatment. j Gray statistics of pEGFR and PD-L1 level in 786-O and 769-P cells (two-way ANOVA, * p

Submit a product review to Biocompare.com

Submit a review of this product to Biocompare.com to receive a \$20 Amazon.com giftcard! Your reviews help your fellow scientists make the right decisions. Thank you for your contribution.



Anti-Phospho-EGFR (Y1092) Rabbit Monoclonal Antibody

For Research Use Only. Not for use in diagnostic procedures.