

Anti-Phospho-Smad3 (S423 + S425) Rabbit Monoclonal Antibody

Catalog Number: P00059-1

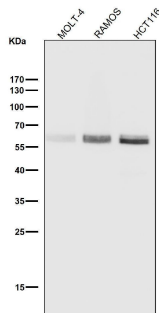
Overview

Product Name	Anti-Phospho-Smad3 (S423 + S425) Rabbit Monoclonal Antibody
Reactive Species	Human, Mouse
Description	Boster Bio Anti-Phospho-Smad3 (S423 + S425) Rabbit Monoclonal Antibody catalog # P00059-1. Tested in WB, IHC, ICC/IF applications. This antibody reacts with Human, Mouse.
Application	IF, IHC, ICC, WB
Clonality	Monoclonal AHO-19
Formulation	Rabbit IgG in stabilizing components, phosphate buffered saline, pH 7.4, 150mM NaCl, 0.02% sodium azide and 50% glycerol. *This antibody is supplied in a stabilized formulation. Compatibility with conjugation reactions depends on the chemistry of the conjugation method used. For conjugation methods that are not compatible with the stabilizing components present in this formulation, a carrier-free antibody format is required.
Storage Instructions	Store at -20°C for one year. For short term storage and frequent use, store at 4°C for up to one month. Avoid repeated freeze-thaw cycles.
Host	Rabbit
Uniprot ID	P84022

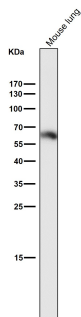
Technical Details

Immunogen	A synthesized peptide derived from human Phospho-Smad3 (S423 + S425)
Isotype	Rabbit IgG
Form	Liquid
Concentration	0.5mg/ml
Purification	Affinity-chromatography
Suggested Dilutions	WB 1:500-1:2000 IHC 1:50-1:200 ICC/IF 1:50-1:200

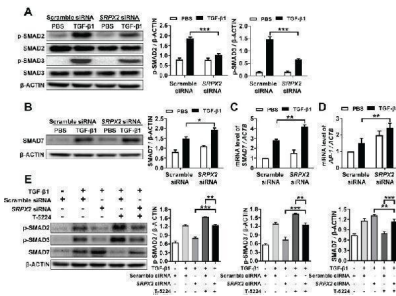
Anti-Phospho-Smad3 (S423 + S425) Rabbit Monoclonal Antibody (P00059-1) Images



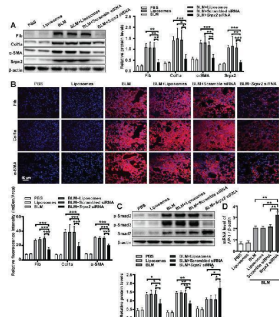
All lanes use the Antibody at 1:1K dilution for 1 hour at room temperature.



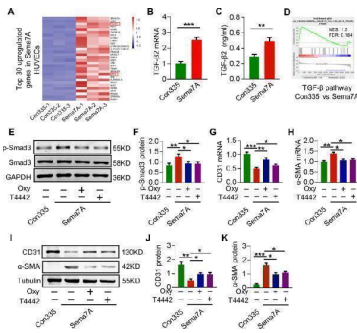
All lanes use the Antibody at 1:1K dilution for 1 hour at room temperature.



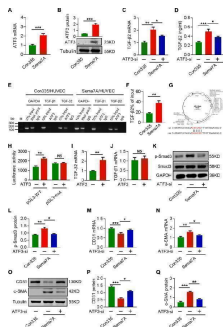
SRPX2 regulated TGF-beta/SMADs signaling pathways by AP1 and SMAD7. A: Results for Western blot analysis of p-SMAD2, SMAD2, p-SMAD3 and SMAD3 expression in HPFs following TGF-beta1 stimulation. B-C : Western blot (B) and RT-PCR (C) analysis of SMAD7 expression in HPFs following TGF-beta1 induction. D : Expression of AP1 in HPFs after TGF-beta1 stimulation. E : Western blot results for analysis of the levels of P-SMAD2, P-SMAD3 and SMAD7 in HPFs pre-treated with T-5224 (an inhibitor for AP-1) treatment following TGF-beta1 induction. The data are represented as the mean \pm SEM of three independent experiments. *, $p < 0.05$; **, $p < 0.01$; ***, $p < 0.001$. Index in PubMed under a CC BY license. PMID: 34093874



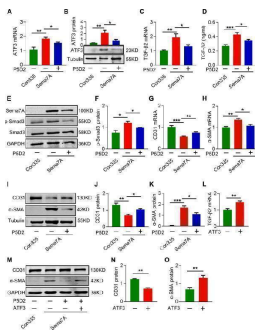
SrpX2 promoted FMT in BLM-induced pulmonary fibrosis. A : Western blot analysis of Fibronectin, Col1a1, alpha-SMA and SrpX2 expression in mice after BLM induction with Scrambled or SrpX2 siRNA-loaded liposomes. B : Representative images of immunostaining of Fibronectin, Col1a1 and alpha-SMA in the mice lung sections. The nuclei were stained blue by DAPI, and the images were taken under original magnification $\times 400$. C : Western blot analysis of p-Smad2, p-Smad3 and Smad7 expression in mice after BLM induction. D : RT-PCR analysis of AP-1 expression in mice in each group. Six mice were included in each study group. The data are represented as the mean \pm SEM. *, $p < 0.05$; **, $p < 0.01$; ***, $p < 0.001$. Index in PubMed under a CC BY license. PMID: 34093874



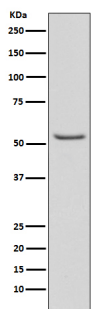
TGF-beta2 gene expression and TGF-Smad signaling are augmented in Sema7A-HUVECs. a The top 30 upregulated genes in Sema7A-HUVECs compared with Con335-HVUECs. b TGF-beta2 mRNA level was analyzed by qPCR normalized to GAPDH. Fold changes are shown. Data are mean \pm SEM, N = 3, *** p



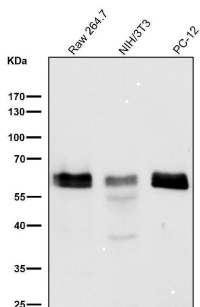
Inhibition of ATF3 reduced TGF-beta2 expression and Sema7A-induced EndMT. a ATF3 mRNA level was analyzed by qPCR normalized to GAPDH. Fold changes are shown. Data are mean \pm SEM, N = 3, *** p



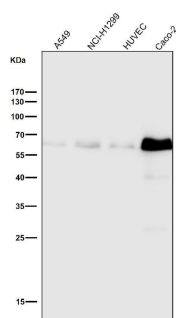
B1 integrin mediates Sema7A signal to TGF-beta2 via ATF3. a Cells were treated with beta1 integrin antibody (P5D2), and ATF3 mRNA level was analyzed by qPCR normalized to GAPDH. Fold changes are shown. Data are mean \pm SEM, N = 3, * p



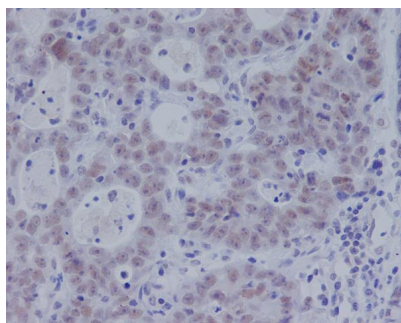
Western blot analysis of Phospho-Smad3 (S423/S425) expression in A549 cell lysate treated with TGF- β 1.



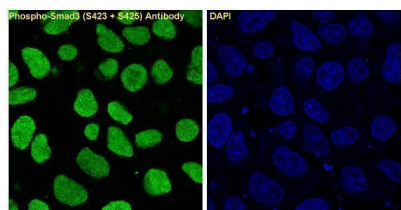
All lanes use the Antibody at 1:1K dilution for 1 hour at room temperature.



All lanes use the Antibody at 1:1K dilution for 1 hour at room temperature.



Immunohistochemical analysis of paraffin-embedded human gastric adenocarcinoma, using Phospho-Smad3 (S423 + S425) Antibody.



Immunofluorescent analysis of A549 cells treated with TGFbeta, using Phospho-Smad3 (S423 + S425) Antibody.

1 Publications Citing This Product

1. PubMed ID: 25356121, Shi K, Jiang J, Ma T, Xie J, Duan L, Chen R, Song P, Yu Z, Liu C, Zhu Q, Zheng J. Int J Clin Exp Med. 2014 Sep 15;7(9):2645-50. Ecollection 2014. Dexamethasone Attenuates Bleomycin-Induced Lung Fibrosis In Mice Through Tgf-??, Smad3 And Jak-Stat P...

Visit bosterbio.com/anti-phospho-smad3-s423-s425-rabbit-monoclonal-antibody-p00059-1-boster.html to see all 1 publications.

Submit a product review to Biocompare.com

Submit a review of this product to Biocompare.com to receive a \$20 Amazon.com giftcard! Your reviews help your fellow scientists make the right decisions. Thank you for your contribution.



Anti-Phospho-Smad3 (S423 + S425) Rabbit Monoclonal Antibody

For Research Use Only. Not for use in diagnostic procedures.