

Anti-Phospho-Smad2 (S255) Rabbit Monoclonal Antibody

Catalog Number: P00090

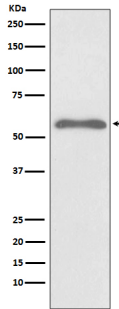
Overview

Product Name	Anti-Phospho-Smad2 (S255) Rabbit Monoclonal Antibody
Reactive Species	Human, Mouse, Rat
Description	Boster Bio Anti-Phospho-Smad2 (S255) Rabbit Monoclonal Antibody catalog # P00090. Tested in WB, IHC, IP applications. This antibody reacts with Human, Mouse, Rat.
Application	IP, IHC, WB
Clonality	Monoclonal HBE-19
Formulation	Rabbit IgG in stabilizing components, phosphate buffered saline, pH 7.4, 150mM NaCl, 0.02% sodium azide and 50% glycerol. *This antibody is supplied in a stabilized formulation. Compatibility with conjugation reactions depends on the chemistry of the conjugation method used. For conjugation methods that are not compatible with the stabilizing components present in this formulation, a carrier-free antibody format is required.
Storage Instructions	Store at -20°C for one year. For short term storage and frequent use, store at 4°C for up to one month. Avoid repeated freeze-thaw cycles.
Host	Rabbit
Uniprot ID	Q15796

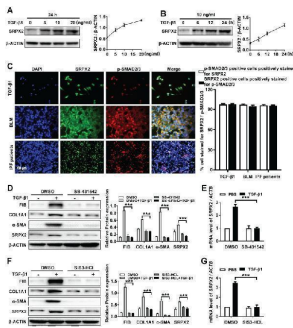
Technical Details

Immunogen	A synthesized peptide derived from human Smad2
Isotype	Rabbit IgG
Form	Liquid
Concentration	0.5mg/ml
Purification	Affinity-chromatography
Suggested Dilutions	WB 1:1000-1:2000 IHC 1:50-1:200 IP 1:50

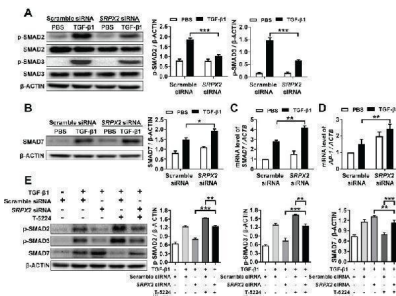
Anti-Phospho-Smad2 (S255) Rabbit Monoclonal Antibody (P00090) Images



Western blot analysis of Phospho-Smad2 (S255) expression in Hela cell treated with Okadaic acid and Calyculin A lysate.

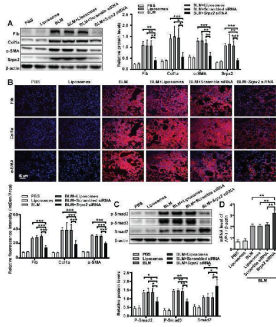


SRPX2 is elevated in fibroblasts in a TGF-beta/SMADs manner. A : Western blot analysis of SRPX2 expression in HPFs following different dose of TGF-beta1 induction for 24 h. B : Results for time-course Western blot analysis of SRPX2 expression in HPFs following TGF-beta1 (10 ng/ml). C : Results for co-immunostaining of SRPX2 and p-SMAD2/3 in HPFs following TGF-beta1 induction for 1h (up), lung sections of pulmonary fibrosis mice (middle), and lung sections from IPF patients (down). The nuclei were stained blue by DAPI, and the images were taken under original magnification $\times 400$. D-E : Western blot (D) and RT-PCR (E) analysis of SRPX2 expression in HPFs pre-treated with SB431542 treatment following TGF-beta1 induction. F-G : Western blot (F) and RT-PCR (G) analysis of SRPX2 expression in HPFs pre-treated with SIS3-HCL following TGF-beta1 induction. The data are represented as the mean \pm SEM of three independent experiments. ***, $p < 0.001$. Index in PubMed under a CC BY license. PMID: 34093874

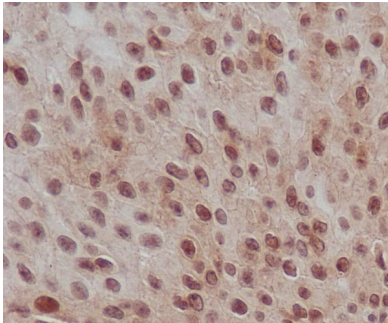


SRPX2 regulated TGF-beta/SMADs signaling pathways by AP1 and SMAD7. A: Results for Western blot analysis of p-SMAD2, SMAD2, p-SMAD3 and SMAD3 expression in HPFs following TGF-beta1 stimulation. B-C : Western blot (B) and RT-PCR (C) analysis of SMAD7 expression in HPFs following TGF-beta1 induction. D : Expression of AP1 in HPFs after TGF-beta1 stimulation. E : Western blot results for analysis of the levels of P-SMAD2, P-SMAD3 and SMAD7 in HPFs pre-treated with T-5224 (an inhibitor for AP-1) treatment following TGF-beta1 induction. The data are represented as the mean \pm SEM of three independent experiments. *, $p < 0.05$; **, $p < 0.01$; ***, $p < 0.001$. Index in PubMed under a CC BY license. PMID: 34093874

SrpX2 promoted FMT in BLM-induced pulmonary fibrosis. A : Western blot analysis of Fibronectin, Col1a1, alpha-SMA and SrpX2 expression in mice after BLM induction with Scrambled or SrpX2 siRNA-loaded liposomes. B : Representative images of immunostaining of Fibronectin, Col1a1 and alpha-SMA in the mice lung sections. The nuclei were stained blue by DAPI, and the images were taken under original magnification $\times 400$. C : Western blot analysis



of p-Smad2, p-Smad3 and Smad7 expression in mice after BLM induction. D : RT-PCR analysis of AP-1 expression in mice in each group. Six mice were included in each study group. The data are represented as the mean \pm SEM. *, $p < 0.05$; **, $p < 0.01$; ***, $p < 0.001$. Index in PubMed under a CC BY license. PMID: 34093874



Immunohistochemical analysis of paraffin-embedded human transitional cell carcinoma of bladder, using Phospho-Smad2 (S255) Antibody.

3 Publications Citing This Product

1. PubMed ID: 27019660, Effect of Kujjie Granule on the Expression of TGF- β /Smads Signaling Pathway in Patients with Ulcerative Colitis
2. PubMed ID: 26261569, Astragaloside effect on TGF- β 1, SMAD2/3, and β 1-SMA expression in the kidney tissues of diabetic KKAY mice
3. PubMed ID: 30090338, Mouse hepatic neoplasm formation induced by trace level and low frequency exposure to diethylnitrosamine through β 2-catenin signaling pathway

Visit bosterbio.com/anti-phospho-smad2-s255-rabbit-monoclonal-antibody-p00090-boster.html to see all 3 publications.

Submit a product review to Biocompare.com

Submit a review of this product to Biocompare.com to receive a \$20 Amazon.com giftcard! Your reviews help your fellow scientists make the right decisions. Thank you for your contribution.



Anti-Phospho-Smad2 (S255) Rabbit Monoclonal Antibody
For Research Use Only. Not for use in diagnostic procedures.