

Anti-Phospho-Smad2 (S250) Rabbit Monoclonal Antibody

Catalog Number: P00090-1

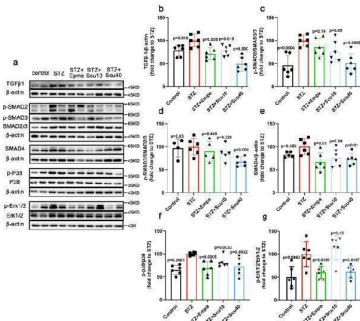
Overview

Product Name	Anti-Phospho-Smad2 (S250) Rabbit Monoclonal Antibody
Reactive Species	Human, Mouse, Rat
Description	Boster Bio Anti-Phospho-Smad2 (S250) Rabbit Monoclonal Antibody catalog # P00090-1. Tested in WB, Flow Cytometry applications. This antibody reacts with Human, Mouse, Rat.
Application	Flow Cytometry, WB
Clonality	Monoclonal HBC-19
Formulation	Rabbit IgG in stabilizing components, phosphate buffered saline, pH 7.4, 150mM NaCl, 0.02% sodium azide and 50% glycerol. *This antibody is supplied in a stabilized formulation. Compatibility with conjugation reactions depends on the chemistry of the conjugation method used. For conjugation methods that are not compatible with the stabilizing components present in this formulation, a carrier-free antibody format is required.
Storage Instructions	Store at -20°C for one year. For short term storage and frequent use, store at 4°C for up to one month. Avoid repeated freeze-thaw cycles.
Host	Rabbit
Uniprot ID	Q15796

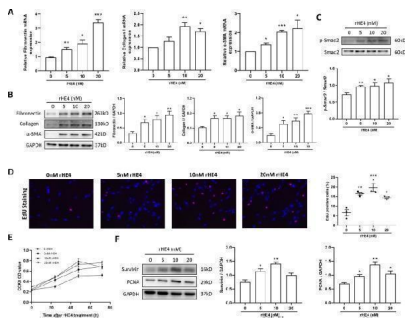
Technical Details

Immunogen	A synthesized peptide derived from human Smad2
Isotype	Rabbit IgG
Form	Liquid
Concentration	0.5mg/ml
Purification	Affinity-chromatography
Suggested Dilutions	WB 1:500-2000 FC 1:20

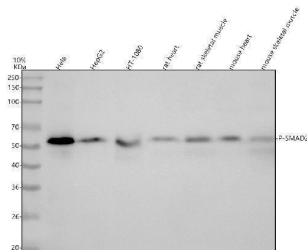
Anti-Phospho-Smad2 (S250) Rabbit Monoclonal Antibody (P00090-1) Images



Scutellarin Inhibits TGF-beta1 and Its Downstream Signalling Pathway. a Representative images of Western blotting samples for TGF-beta1, p-SMAD2, p-SMAD3, SMAD2/3, SMAD4, p-p38, p38 and p-Erk and Erk1/2 of the mice treated with vehicle, scutellarin or empagliflozin. b - g Quantifications of the protein as indicated. All data are normalized to the STZ group and presented as the mean \pm S.D.; n = 4-6 for each group, "n" stands for the number of animals; p vs. the model group (STZ) Index in PubMed under a CC BY license. PMID: 38656633



Recombinant HE4 promoted fibroblast-myofibroblast transition and fibroblastic proliferation. A, B Different concentrations of rHE4 facilitated fibronectin, collagen I and alpha-SMA expression both in mRNA level (n = 3) and protein level (n = 4). The representative western blot images were shown and the band intensity was quantified by ImageJ. C Treatment with rHE4 in HPF cells enhanced phosphorylation of Smad2 (n = 4). D Typical images of EdU-staining HPFs followed by rHE4 treatment for 48 h and the quantitative graph were shown (n = 3). magnification = \times 200. E CCK8 proliferation curve signified the pro-proliferative effect of rHE4 (n = 4). HPF was stimulated by rHE4 for 0 h, 24 h, 48 h and 72 h. F Representative western blot images of PCNA and Survivin were displayed and quantified by ImageJ (n = 3). Data are presented as mean \pm SEM. P-values were calculated using one-way ANOVA followed by Newman-Keuls test. *P<0.05, **P<0.01, and ***P<0.001 represent significant differences. rHE4, recombinant human epididymis protein 4; EdU, 5-ethynyl-2'-deoxyuridine; CCK8, Cell Counting Kit-8; PCNA, proliferating cell nuclear antigen; HPF, human pulmonary fibroblast Index in PubMed under a CC BY license. PMID: 35550579



Western blot analysis of Phospho-Smad2 (S250) using anti-Phospho-Smad2 (S250) antibody (P00090-1). Electrophoresis was performed on a 5-20% SDS-PAGE gel at 70V (Stacking gel) / 90V (Resolving gel) for 2-3 hours. The sample well of each lane was loaded with 30 ug of sample under reducing conditions. Lane 1: human Hela whole cell lysates, Lane 2: human HepG2 whole cell lysates, Lane 3: human HT-1080 whole cell lysates, Lane 4: rat heart tissue lysates, Lane 5: rat skeletal muscle tissue lysates, Lane 6: mouse heart tissue lysates, Lane 7: mouse skeletal muscle tissue lysates. After electrophoresis, proteins were transferred to a nitrocellulose membrane at 150 mA for 50-90 minutes. Blocked the membrane with 5% non-fat milk/TBS for 1.5 hour at RT. The membrane was incubated with rabbit anti-Phospho-Smad2 (S250) antigen affinity purified monoclonal antibody (Catalog # P00090-1) at 1:1000 overnight at 4°C, then washed with TBS-0.1%Tween 3 times with 5 minutes each and probed with a goat anti-rabbit IgG-HRP secondary antibody at a dilution of 1:1000 for 1.5 hour at RT. The

signal is developed using an Enhanced Chemiluminescent detection (ECL) kit (Catalog # EK1002) with Tanon 5200 system. A specific band was detected for Phospho-Smad2 (S250) at approximately 58 kDa. The expected band size for Phospho-Smad2 (S250) is at 52 kDa.

4 Publications Citing This Product

1. PubMed ID: 34093874, Wang Q,Liu J,Hu Y,Pan T,Xu Y,Yu J,Xiong W,Zhou Q,Wang Y.Local administration of liposomal-based Srxp2 gene therapy reverses pulmonary fibrosis by blockading fibroblast-to-myofibroblast transition.Theranostics.2021 May 13;11(14):7110-7125.doi:10.7150/thno.61085. PMID:34093874;PMCID:PMC8171094.

2. PubMed ID: 27019660, Effect of Kuijie Granule on the Expression of TGF- β /Smads Signaling Pathway in Patients with Ulcerative Colitis

3. PubMed ID: 26261569, Astragaloside effect on TGF- β 1, SMAD2/3, and β 1-SMA expression in the kidney tissues of diabetic KKAY mice

Visit bosterbio.com/anti-phospho-smad2-s250-rabbit-monoclonal-antibody-p00090-1-boster.html to see all 4 publications.

Submit a product review to Biocompare.com

Submit a review of this product to Biocompare.com to receive a \$20 Amazon.com giftcard! Your reviews help your fellow scientists make the right decisions. Thank you for your contribution.



Anti-Phospho-Smad2 (S250) Rabbit Monoclonal Antibody

For Research Use Only. Not for use in diagnostic procedures.