

Anti-Phospho-TAU/MAPT (T205) Antibody

Catalog Number: P00097-4

About MAPT

MAPT, Microtubule-associated protein tau, appears to be enriched in axons. The MAPT gene is assigned to chromosome 17 by hybridization of a cDNA clone to flow-sorted and spot-blotted chromosomes and to 17q21 by in situ hybridization, containing 16 exons. The tau proteins are the product of alternative splicing from a single gene that in humans is designated MAPT. Tau proteins are proteins that stabilize microtubules. They are abundant in neurons in the central nervous system and are less common elsewhere. When tau proteins are defective, and no longer stabilize microtubules properly, they can result in dementias such as Alzheimer's disease.

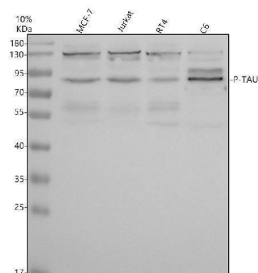
Overview

| | |
|----------------------|--|
| Product Name | Anti-Phospho-TAU/MAPT (T205) Antibody |
| Reactive Species | Human, Mouse, Rat |
| Description | Boster Bio Anti-Phospho-TAU/MAPT (T205) Antibody catalog # P00097-4. Tested in WB, IHC applications. This antibody reacts with Human, Mouse, Rat. |
| Application | IHC, WB |
| Clonality | Polyclonal |
| Formulation | 500 ug/ml antibody with PBS, 0.02% NaN ₃ , 1 mg stabilizing protein and 50% glycerol This antibody is supplied in a stabilized formulation. Compatibility with conjugation reactions depends on the chemistry of the conjugation method used. For conjugation methods that are not compatible with the stabilizing components present in this formulation, a carrier-free antibody format is required. |
| Storage Instructions | 12 months from date of receipt at -20°C as supplied. 6 months at 2 to 8°C after reconstitution. Avoid repeated freezing and thawing. |
| Host | Rabbit |
| Uniprot ID | P10636 |

Technical Details

| | |
|---------------------|---|
| Immunogen | A synthesized peptide derived from human Tau around the phosphorylation site of Thr205. |
| Form | Liquid |
| Concentration | 500 ug/ml |
| Purification | Protein A affinity purified. |
| Suggested Dilutions | Western blot, 1:500-2000 Immunohistochemistry, 1:50-200 |

Anti-Phospho-TAU/MAPT (T205) Antibody (P00097-4) Images



Western blot analysis of TAU/MAPT using anti-TAU/MAPT antibody (P00097-4). Electrophoresis was performed on a 10% SDS-PAGE gel at 80V (Stacking gel) / 120V (Resolving gel) for 2 hours. The sample well of each lane was loaded with 30 ug of sample under reducing conditions. Lane 1: human MCF-7 whole cell lysates, Lane 2: human Jurkat whole cell lysates, Lane 3: human RT4 whole cell lysates, Lane 4: rat C6 whole cell lysates. After electrophoresis, proteins were transferred to a nitrocellulose membrane at 150 mA for 50-90 minutes. Blocked the membrane with 5% non-fat milk/TBS for 1.5 hour at RT. The membrane was incubated with rabbit anti-TAU/MAPT antigen affinity purified polyclonal antibody (P00097-4) at 1:500 overnight at 4°C, then washed with TBS-0.1%Tween 3 times with 5 minutes each and probed with a goat anti-rabbit IgG-HRP secondary antibody at a dilution of 1:5000 for 1.5 hour at RT. The signal is developed using an ECL Plus Western Blotting Substrate (Catalog # AR1196-200) with Tanon 5200 system. A specific band was detected for TAU/MAPT at approximately 80 kDa. The expected band size for TAU/MAPT is at 79 kDa.

Submit a product review to Biocompare.com

Submit a review of this product to Biocompare.com to receive a \$20 Amazon.com giftcard! Your reviews help your fellow scientists make the right decisions. Thank you for your contribution.



Anti-Phospho-TAU/MAPT (T205) Antibody

For Research Use Only. Not for use in diagnostic procedures.