

Anti-Phospho-ERK1 (T202) + ERK2 (T185) Rabbit Monoclonal Antibody

Catalog Number: P00104-2

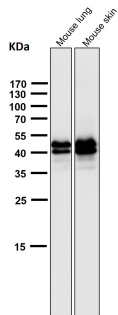
Overview

Product Name	Anti-Phospho-ERK1 (T202) + ERK2 (T185) Rabbit Monoclonal Antibody
Reactive Species	Human, Mouse, Rat
Description	Boster Bio Anti-Phospho-ERK1 (T202) + ERK2 (T185) Rabbit Monoclonal Antibody catalog # P00104-2. Tested in WB, IHC, ICC/IF, IP applications. This antibody reacts with Human, Mouse, Rat.
Application	IP, IF, IHC, ICC, WB
Clonality	Monoclonal 18M06
Formulation	Rabbit IgG in stabilizing components, phosphate buffered saline, pH 7.4, 150mM NaCl, 0.02% sodium azide and 50% glycerol. *This antibody is supplied in a stabilized formulation. Compatibility with conjugation reactions depends on the chemistry of the conjugation method used. For conjugation methods that are not compatible with the stabilizing components present in this formulation, a carrier-free antibody format is required.
Storage Instructions	Store at -20°C for one year. For short term storage and frequent use, store at 4°C for up to one month. Avoid repeated freeze-thaw cycles.
Host	Rabbit
Uniprot ID	P27361/P28482

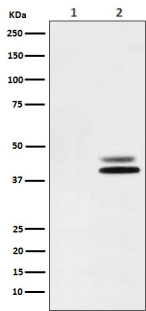
Technical Details

Immunogen	A synthesized peptide derived from human Phospho-ERK1 (T202) + ERK2 (T185)
Isotype	IgG
Form	Liquid
Concentration	0.5mg/ml
Purification	Affinity-chromatography
Suggested Dilutions	WB 1:500-1:1000 IHC 1:50-1:200 ICC/IF 1:50-1:200 IP 1:40

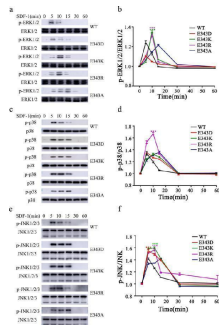
Anti-Phospho-ERK1 (T202) + ERK2 (T185) Rabbit Monoclonal Antibody (P00104-2) Images



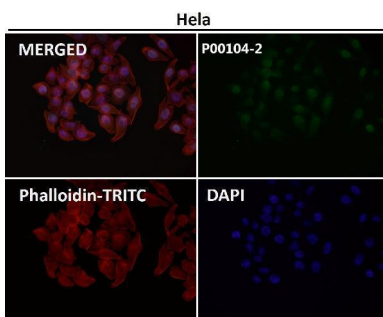
All lanes use the Antibody at 1:2K dilution for 1 hour at room temperature.



Western blot analysis of Phospho-ERK1 (T202) + ERK2 (T185) expression in (1) NIH/3T3 cell lysate; (2) NIH/3T3 cell lysate treated with PDGF.

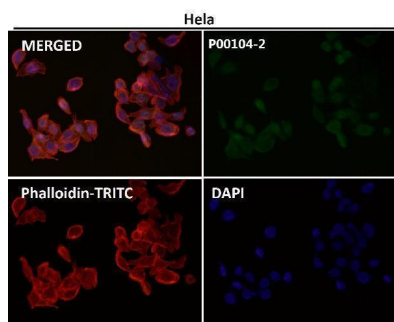


The effect of E343 mutation on MAPK signaling. The stably overexpressing HeLa cells were serum-starved and then exposed to SDF-1 (50 nM) and over a range of time periods (5 min to 60 min). Western blotting was performed for phosphorylated ERK1/2 (a), p38 (c) and JNK1/2/3 (e). Total ERK1/2, p38 and JNK were used as loading control. The relative phosphorylation level was quantified using ImageJ software and showed in (b) for ERK1/2, (d) for p38 and (f) for JNK1/2/3, respectively. Bars represent the mean value \pm standard deviation of at least three independent experiments. * P



Immunofluorescent analysis using the Antibody at 1:50 dilution.

Immunofluorescent analysis using the Antibody at 1:150 dilution.



Submit a product review to [Biocompare.com](https://www.biocompare.com)

Submit a review of this product to [Biocompare.com](https://www.biocompare.com) to receive a \$20 Amazon.com giftcard! Your reviews help your fellow scientists make the right decisions. Thank you for your contribution.



Anti-Phospho-ERK1 (T202) + ERK2 (T185) Rabbit Monoclonal Antibody

For Research Use Only. Not for use in diagnostic procedures.