

Anti-Phospho-CBL (Y774) Rabbit Monoclonal Antibody

Catalog Number: P00152

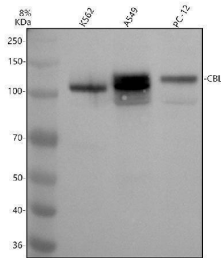
Overview

Product Name	Anti-Phospho-CBL (Y774) Rabbit Monoclonal Antibody
Reactive Species	Human
Description	Boster Bio Anti-Phospho-CBL (Y774) Rabbit Monoclonal Antibody catalog # P00152. Tested in WB, IHC, Flow Cytometry applications. This antibody reacts with Human.
Application	Flow Cytometry, IHC, WB
Clonality	Monoclonal 28C29
Formulation	Rabbit IgG in stabilizing components, phosphate buffered saline, pH 7.4, 150mM NaCl, 0.02% sodium azide and 50% glycerol. *This antibody is supplied in a stabilized formulation. Compatibility with conjugation reactions depends on the chemistry of the conjugation method used. For conjugation methods that are not compatible with the stabilizing components present in this formulation, a carrier-free antibody format is required.
Storage Instructions	Store at -20°C for one year. For short term storage and frequent use, store at 4°C for up to one month. Avoid repeated freeze-thaw cycles.
Host	Rabbit
Uniprot ID	P22681

Technical Details

Immunogen	A synthesized peptide derived from human Phospho-CBL (Y774)
Isotype	IgG
Form	Liquid
Concentration	0.5mg/ml
Purification	Affinity-chromatography
Suggested Dilutions	WB 1:500-2000 IHC 1:50-200 FC 1:50

Anti-Phospho-CBL (Y774) Rabbit Monoclonal Antibody (P00152) Images



Western blot analysis of c-Cbl/CBL using anti-c-Cbl/CBL antibody (P00152). Electrophoresis was performed on a 8% SDS-PAGE gel at 80V (Stacking gel) / 120V (Resolving gel) for 2 hours. The sample well of each lane was loaded with 30 ug of sample under reducing conditions. Lane 1: human K562 whole cell lysates, Lane 2: human A549 whole cell lysates, Lane 3: rat PC-12 whole cell lysates. After electrophoresis, proteins were transferred to a nitrocellulose membrane at 150 mA for 50-90 minutes. Blocked the membrane with 5% non-fat milk/TBS for 1.5 hour at RT. The membrane was incubated with rabbit anti-c-Cbl/CBL antigen affinity purified monoclonal antibody (P00152) at 1:500 overnight at 4°C, then washed with TBS-0.1%Tween 3 times with 5 minutes each and probed with a goat anti-rabbit IgG-HRP secondary antibody at a dilution of 1:5000 for 1.5 hour at RT. The signal is developed using an ECL Plus Western Blotting Substrate (Catalog # AR1196-200) with Tanon 5200 system. A specific band was detected for c-Cbl/CBL at approximately 120 kDa. The expected band size for c-Cbl/CBL is at 100 kDa.

Submit a product review to Biocompare.com

Submit a review of this product to Biocompare.com to receive a \$20 Amazon.com giftcard! Your reviews help your fellow scientists make the right decisions. Thank you for your contribution.



Anti-Phospho-CBL (Y774) Rabbit Monoclonal Antibody

For Research Use Only. Not for use in diagnostic procedures.