

Anti-p38 MAPK Phospho (pT180/pY182) MAPK14 Rabbit Monoclonal Antibody, Clone#RM243

Catalog Number: P00176-1

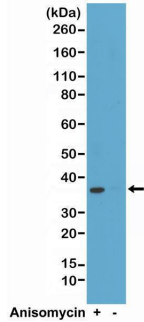
Overview

Product Name	Anti-p38 MAPK Phospho (pT180/pY182) MAPK14 Rabbit Monoclonal Antibody, Clone#RM243
Reactive Species	Human
Description	Boster Bio Anti-p38 MAPK Phospho (pT180/pY182) MAPK14 Rabbit Monoclonal Antibody, Clone#RM243 (Catalog # P00176-1). Tested in IHC, WB applications. This antibody reacts with Human.
Application	IHC, WB
Clonality	Monoclonal RM243
Formulation	50% Glycerol/PBS with 1% stabilizing protein and 0.09% sodium azide This antibody is supplied in a stabilized formulation. Compatibility with conjugation reactions depends on the chemistry of the conjugation method used. For conjugation methods that are not compatible with the stabilizing components present in this formulation, a carrier-free antibody format is required.
Storage Instructions	Store at -20°C for one year. Avoid repeated freeze-thaw cycles.
Host	Rabbit
Uniprot ID	Q16539

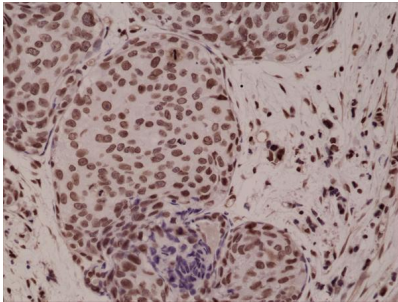
Technical Details

Immunogen	A phospho-peptide corresponding to human Phospho-p38 MAPK (Thr180/Tyr182)
Cross Reactivity	This antibody reacts to p38 MAPK only when dual phosphorylation at Thr180 and Tyr182 is observed. There is no cross-reactivity with p38 MAPK without dual phosphorylation at Thr180 and Tyr182.
Isotype	Rabbit IgG
Form	Liquid
Concentration	0.5-1mg/ml, actual concentration vary by lot. Use suggested dilution ratio to decide dilution procedure.
Purification	Protein A affinity purified from an animal origin-free culture supernatant
Suggested Dilutions	Immunohistochemistry (IHC): 1:500-1:1000 dilution WB: 1:1000-1:2000 dilution

Anti-p38 MAPK Phospho (pT180/pY182) MAPK14 Rabbit Monoclonal Antibody, Clone#RM243 (P00176-1) Images



Western Blot of HeLa cell lysates, treated or non- treated with anisomycin using Anti-Phospho-p38 MAPK (Thr180/Tyr182) RM243 at a 1:2000 dilution, showed a band of Phospho-p38 MAPK (~38 kDa) in anisomycin-treated HeLa cells.



Immunohistochemical staining of formalin fixed and paraffin embedded human breast cancer tissue sections using Anti-Phospho-p38 MAPK (Thr180/ Tyr182) RM243 at a 1:1000 dilution.

2 Publications Citing This Product

1. PubMed ID: 31566725, Ji F,Wang Y,Yuan J,Wu Q,Wang J,Liu D.The potential role of stromal cell-derived factor-1alpha/CXCR4/CXCR7 axis in adipose-derived mesenchymal stem cells.J Cell Physiol.2020 Apr;235(4):3548-3557.doi:10.1002/jcp.29243.Epub 2019 Sep 30.PMID:31566725.

2. PubMed ID: 29048616, Liao S, Xiao S, Chen H, Zhang M, Chen Z, Long Y, Gao L, He J, Ge Y, Yi W, Wu M, Li G, Zhou Y. Int J Oncol. 2017 Nov;51(5):1497-1507. doi: 10.3892/ijo.2017.4137. Epub 2017 Sep 27. The receptor for activated protein kinase C promotes cell growth, in...

Visit [bosterbio.com/anti-p38-mapk-phospho-pt180-py182-rabbit-mono-clonal-antibody-clone-rm243-p00176-1-boster.html](https://www.bosterbio.com/anti-p38-mapk-phospho-pt180-py182-rabbit-mono-clonal-antibody-clone-rm243-p00176-1-boster.html) to see all 2 publications.

Submit a product review to Biocompare.com

Submit a review of this product to Biocompare.com to receive a \$20 Amazon.com giftcard! Your reviews help your fellow scientists make the right decisions. Thank you for your contribution.



Anti-p38 MAPK Phospho (pT180/pY182) MAPK14 Rabbit Monoclonal Antibody, Clone#RM243

For Research Use Only. Not for use in diagnostic procedures.