

Anti-Phospho-MEK1/2 (Ser218,222) MAP2K1 Antibody

Catalog Number: P00292

About MAP2K1/2

MEK 1 (MAP Kinase Kinase, also known as MKK) is an integral component of the MAP kinase cascade that regulates cell growth and differentiation (Ahn, 1993; Chong et al., 2003). This pathway also plays a key role in synaptic plasticity in the brain (Adams and Sweatt, 2002). Activated MEK 1 acts as a dual specificity kinase phosphorylating both a threonine and a tyrosine residue on MAP kinase (Kyriakis et al., 1991; Seger et al., 1991; Crews et al., 1992).

Overview

Product Name	Anti-Phospho-MEK1/2 (Ser218,222) MAP2K1 Antibody
Reactive Species	Human, Mouse
Description	Boster Bio Anti-Phospho-MEK1/2 (Ser218, 222) MAP2K1 Antibody (Catalog # P00292). Tested in WB applications. This antibody reacts with Mouse, Human.
Application	WB
Clonality	Polyclonal
Formulation	10 mM HEPES (pH 7.5), 150 mM NaCl, 100 µg per ml BSA and 50% glycerol.
Storage Instructions	Storage at -20°C is recommended, as aliquots may be taken without freeze/thawing due to presence of 50% glycerol. Stable for at least 1 year at -20°C. After date of receipt, stable for at least 1 year at -20°C.
Host	Rabbit
Uniprot ID	Q02750

Technical Details

Immunogen	Synthetic phospho-peptide corresponding to amino acid residues surrounding Ser218/222 of human MEK1/2, conjugated to keyhole limpet hemocyanin (KLH). Note: The phosphosites in human MEK 1/2 are Ser218 and Ser222; the phosphosites in mouse MEK 1/2 are Ser217 and Ser221. Immunogen species is Human.
Predicted Reactive Species	Bovine, Canine, Chicken, Primate, Rat, Xenopus, Zebrafish
Isotype	IgG
Form	Liquid
Concentration	0.5-1mg/ml, actual concentration vary by lot. Use suggested dilution ratio to decide dilution procedure.
Purification	Prepared from pooled rabbit serum by affinity purification via sequential chromatography on

phospho and non-phosphopeptide affinity columns.

Suggested Dilutions

Dilute the sample so that the expected range of concentrations fall within the detection range of this kit.

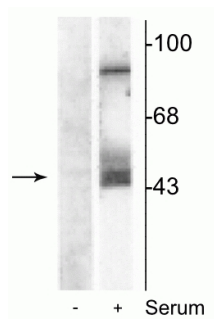
If the expected range of concentration is unknown, a pilot test should be conducted to decide the optimal dilution ratio for your samples.

Some PubMed article(s) citing the expression level of this target are as follows:

Boster Bio's internal QC testing used:

WB: 1:1000

Anti-Phospho-MEK1/2 (Ser218,222) MAP2K1 Antibody (P00292) Images



Western Blot of NIH 3T3 cell lysates showing specific immunolabeling of the ~45 kDa MEK 1/2 protein phosphorylated at Ser²¹⁸ and Ser²²². The cells were either serum starved (-) or incubated in the presence of serum (+). Immunolabeling of an additional band at ~95 kDa was also observed.

Submit a product review to Biocompare.com

Submit a review of this product to Biocompare.com to receive a \$20 Amazon.com giftcard! Your reviews help your fellow scientists make the right decisions. Thank you for your contribution.



Anti-Phospho-MEK1/2 (Ser218,222) MAP2K1 Antibody