

Anti-Phospho-Cyclin E1 (T77) CCNE1 Rabbit Monoclonal Antibody

Catalog Number: P00543

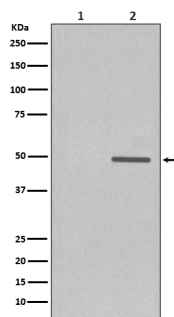
Overview

Product Name	Anti-Phospho-Cyclin E1 (T77) CCNE1 Rabbit Monoclonal Antibody
Reactive Species	Human
Description	Boster Bio Anti-Phospho-Cyclin E1 (T77) CCNE1 Rabbit Monoclonal Antibody catalog # P00543. Tested in WB, IHC, ICC/IF applications. This antibody reacts with Human.
Application	IF, IHC, ICC, WB
Clonality	Monoclonal GHC-3
Formulation	Rabbit IgG in stabilizing components, phosphate buffered saline, pH 7.4, 150mM NaCl, 0.02% sodium azide and 50% glycerol. *This antibody is supplied in a stabilized formulation. Compatibility with conjugation reactions depends on the chemistry of the conjugation method used. For conjugation methods that are not compatible with the stabilizing components present in this formulation, a carrier-free antibody format is required.
Storage Instructions	Store at -20°C for one year. For short term storage and frequent use, store at 4°C for up to one month. Avoid repeated freeze-thaw cycles.
Host	Rabbit
Uniprot ID	P24864

Technical Details

Immunogen	A synthesized peptide derived from human Cyclin E1
Isotype	Rabbit IgG
Form	Liquid
Concentration	0.5mg/ml
Purification	Affinity-chromatography
Suggested Dilutions	WB 1:500-2000 IHC 1:50-200 ICC/IF 1:50-200

Anti-Phospho-Cyclin E1 (T77) CCNE1 Rabbit Monoclonal Antibody (P00543) Images



Western blot analysis of Phospho-Cyclin E1 (T77) expression in (1) JAR cell treated with Lambda Phosphatase lysate; (2) JAR cell lysate.

1 Publications Citing This Product

1. PubMed ID: 23145020, Wu Y, Tao Y, Chen Y, Xu W. Plos One. 2012;7(11):E48917. Doi: 10.1371/Journal.Pone.0048917. Epub 2012 Nov 7. Rhoc Regulates The Proliferation Of Gastric Cancer Cells Through Interaction With Iqgap1.

Visit bosterbio.com/anti-phospho-cyclin-e1-t77-rabbit-monoclonal-antibody-p00543-boster.html to see all 1 publications.

Submit a product review to Biocompare.com

Submit a review of this product to Biocompare.com to receive a \$20 Amazon.com giftcard! Your reviews help your fellow scientists make the right decisions. Thank you for your contribution.



Anti-Phospho-Cyclin E1 (T77) CCNE1 Rabbit Monoclonal Antibody

For Research Use Only. Not for use in diagnostic procedures.