

Anti-Phospho-Creb (S133) CREB1 Rabbit Monoclonal Antibody

Catalog Number: P00577-1

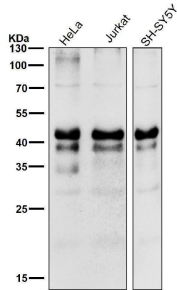
Overview

| | |
|----------------------|--|
| Product Name | Anti-Phospho-Creb (S133) CREB1 Rabbit Monoclonal Antibody |
| Reactive Species | Human, Mouse, Rat |
| Description | Boster Bio Anti-Phospho-Creb (S133) CREB1 Rabbit Monoclonal Antibody catalog # P00577-1. Tested in WB, IHC, ICC/IF, IP, Flow Cytometry applications. This antibody reacts with Human, Mouse, Rat. |
| Application | Flow Cytometry, IP, IF, IHC, ICC, WB |
| Clonality | Monoclonal IG-3 |
| Formulation | Rabbit IgG in stabilizing components, phosphate buffered saline, pH 7.4, 150mM NaCl, 0.02% sodium azide and 50% glycerol. *This antibody is supplied in a stabilized formulation. Compatibility with conjugation reactions depends on the chemistry of the conjugation method used. For conjugation methods that are not compatible with the stabilizing components present in this formulation, a carrier-free antibody format is required. |
| Storage Instructions | Store at -20°C for one year. For short term storage and frequent use, store at 4°C for up to one month. Avoid repeated freeze-thaw cycles. |
| Host | Rabbit |
| Uniprot ID | P16220 |

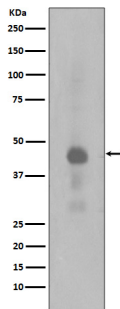
Technical Details

| | |
|---------------------|--|
| Immunogen | A synthesized peptide derived from human Phospho-Creb (S133) |
| Isotype | Rabbit IgG |
| Form | Liquid |
| Concentration | 0.5mg/ml |
| Purification | Affinity-chromatography |
| Suggested Dilutions | WB 1:500-1:2000 IHC 1:50-1:200 ICC/IF 1:50-1:200 IP 1:40 FC 1:40 |

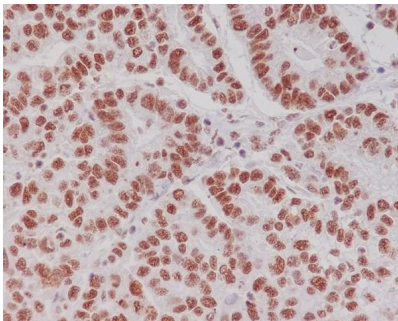
Anti-Phospho-Creb (S133) CREB1 Rabbit Monoclonal Antibody (P00577-1) Images



All lanes use the Antibody at 1:1k dilution for 1 hour at room temperature.



Western blot analysis of Phospho-Creb(Ser133) expression in HeLa cell lysates treated with Calyculin A.



Immunohistochemical analysis of paraffin-embedded human gastric carcinoma, using Phospho-Creb (S133) Antibody.

1 Publications Citing This Product

1. PubMed ID: 24289115, LncRNA DQ786243 affects Treg related CREB and Foxp3 expression in Crohn's disease

Visit bosterbio.com/anti-phospho-creb-s133-rabbit-monoclonal-antibody-p00577-1-boster.html to see all 1 publications.

Submit a product review to Biocompare.com

Submit a review of this product to Biocompare.com to receive a \$20 Amazon.com giftcard! Your reviews help your fellow scientists make the right decisions. Thank you for your contribution.



Anti-Phospho-Creb (S133) CREB1 Rabbit Monoclonal Antibody

For Research Use Only. Not for use in diagnostic procedures.