

Anti-Phospho-DNA PKcs (S2056) PRKDC Rabbit Monoclonal Antibody

Catalog Number: P00645

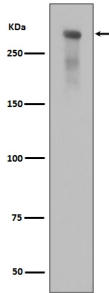
Overview

Product Name	Anti-Phospho-DNA PKcs (S2056) PRKDC Rabbit Monoclonal Antibody
Reactive Species	Human
Description	Boster Bio Anti-Phospho-DNA PKcs (S2056) PRKDC Rabbit Monoclonal Antibody catalog # P00645. Tested in WB, IHC, ICC/IF applications. This antibody reacts with Human.
Application	IF, IHC, ICC, WB
Clonality	Monoclonal BOD-16
Formulation	Rabbit IgG in stabilizing components, phosphate buffered saline, pH 7.4, 150mM NaCl, 0.02% sodium azide and 50% glycerol. *This antibody is supplied in a stabilized formulation. Compatibility with conjugation reactions depends on the chemistry of the conjugation method used. For conjugation methods that are not compatible with the stabilizing components present in this formulation, a carrier-free antibody format is required.
Storage Instructions	Store at -20°C for one year. For short term storage and frequent use, store at 4°C for up to one month. Avoid repeated freeze-thaw cycles.
Host	Rabbit
Uniprot ID	P78527

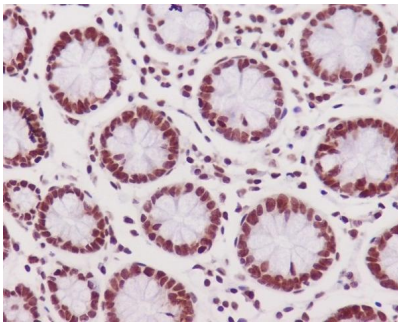
Technical Details

Immunogen	A synthesized peptide derived from human Phospho-DNA PKcs (S2056)
Isotype	Rabbit IgG
Form	Liquid
Concentration	0.5mg/ml
Purification	Affinity-chromatography
Suggested Dilutions	WB 1:500-2000 IHC 1:50-200 ICC/IF 1:50-200

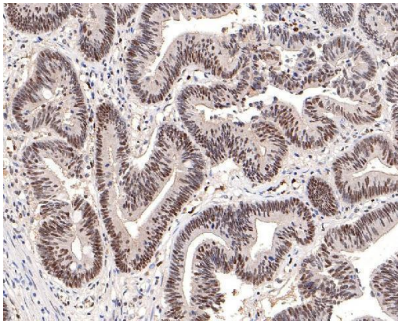
Anti-Phospho-DNA PKcs (S2056) PRKDC Rabbit Monoclonal Antibody (P00645) Images



Western blot analysis of Phospho-DNA PKcs (Ser2056) expression in alkaline treated Jurkat cell lysate.



Immunohistochemical analysis of paraffin-embedded human colon tissue using anti-Phospho-DNA PKcs (S2056) antibody. The section was pre-treated using heat mediated antigen retrieval with Tris-EDTA buffer (pH 9.0) for 20 minutes. The tissues were blocked in 5% BSA for 30 minutes at room temperature, washed with ddH₂O and PBS, and then probed with the primary antibody (1/200) for 30 minutes at room temperature. The detection was performed using an HRP conjugated compact polymer system. DAB was used as the chromogen. Tissues were counterstained with hematoxylin and mounted with DPX.



Immunohistochemical analysis of paraffin-embedded human colon carcinoma tissue using anti-Phospho-DNA PKcs (S2056) antibody. The section was pre-treated using heat mediated antigen retrieval with Tris-EDTA buffer (pH 9.0) for 20 minutes. The tissues were blocked in 5% BSA for 30 minutes at room temperature, washed with ddH₂O and PBS, and then probed with the primary antibody (1/200) for 30 minutes at room temperature. The detection was performed using an HRP conjugated compact polymer system. DAB was used as the chromogen. Tissues were counterstained with hematoxylin and mounted with DPX.

Submit a product review to Biocompare.com

Submit a review of this product to Biocompare.com to receive a \$20 Amazon.com giftcard! Your reviews help your fellow scientists make the right decisions. Thank you for your contribution.



Anti-Phospho-DNA PKcs (S2056) PRKDC Rabbit Monoclonal Antibody

For Research Use Only. Not for use in diagnostic procedures.