

Anti-Phospho-ATF2 (Thr52) Antibody

Catalog Number: P00916-1

About ATF2

The transcription factor ATF2 is a member of the ATF/CREB family of leucine zipper proteins. In response to stress stimuli, it activates a variety of gene targets that are involved in oncogenesis, and has been correlated with maintenance of a cancer cell phenotype (Vlahopoulos et al., 2008). Inhibiting ATF2 impedes melanoma development and elicits tumor suppressor function (Bhoumik et al., 2008). To act as a tumor suppressor, ATF2 must localize at the mitochondria, and phosphorylation at Thr-52 by PKCepsilon regulates this translocation (Lau et al., 2012).

Overview

Product Name	Anti-Phospho-ATF2 (Thr52) Antibody
Reactive Species	Human, Mouse
Description	Boster Bio Anti-Phospho-ATF2 (Thr52) Antibody (Catalog # P00916-1). Tested in WB applications. This antibody reacts with Human, Mouse.
Application	WB
Clonality	Polyclonal 608
Formulation	10 mM HEPES (pH 7.5), 150 mM NaCl, 100 µg per ml BSA and 50% glycerol.
Storage Instructions	Storage at -20°C is recommended, as aliquots may be taken without freeze/thawing due to presence of 50% glycerol. Stable for at least 1 year at -20°C. After date of receipt, stable for at least 1 year at -20°C.
Host	Rabbit
Uniprot ID	P15336

Technical Details

Immunogen	Synthetic phospho-peptide corresponding to amino acid residues surrounding Thr52 of human ATF2, conjugated to keyhole limpet hemocyanin (KLH). Immunogen species is Human.
Predicted Reactive Species	Rat
Isotype	IgG
Form	Liquid
Concentration	0.5-1mg/ml, actual concentration vary by lot. Use suggested dilution ratio to decide dilution procedure.
Purification	Prepared from rabbit serum by affinity purification via sequential chromatography on phospho and non-phosphopeptide affinity columns.

Suggested Dilutions

Dilute the sample so that the expected range of concentrations fall within the detection range of this kit.

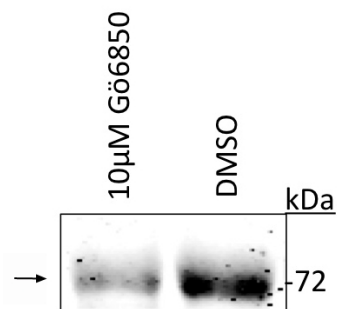
If the expected range of concentration is unknown, a pilot test should be conducted to decide the optimal dilution ratio for your samples.

Some PubMed article(s) citing the expression level of this target are as follows:

Boster Bio's internal QC testing used:

WB: 1:250

Anti-Phospho-ATF2 (Thr52) Antibody (P00916-1) Images



Western blot of UACC903 melanoma cell line lysate (DMSO) showing specific immunolabeling of the ~ 72 kDa ATF2 protein phosphorylated at Thr⁵². Immunolabeling is reduced by treatment of the lysate with the PKC catalytic inhibitor Go6850.

Submit a product review to Biocompare.com

Submit a review of this product to Biocompare.com to receive a \$20 Amazon.com giftcard! Your reviews help your fellow scientists make the right decisions. Thank you for your contribution.



Anti-Phospho-ATF2 (Thr52) Antibody