

Anti-Phospho-Rsk1 (Thr359/Ser363) RPS6KA1 Rabbit Monoclonal Antibody, Clone#RM233

Catalog Number: P01058-3

Overview

Product Name	Anti-Phospho-Rsk1 (Thr359/Ser363) RPS6KA1 Rabbit Monoclonal Antibody, Clone#RM233
Reactive Species	Human
Description	Boster Bio Anti-Phospho-Rsk1 (Thr359/Ser363) RPS6KA1 Rabbit Monoclonal Antibody, Clone#RM233 (Catalog # P01058-3). Tested in IHC, WB applications. This antibody reacts with Human.
Application	IHC, WB
Clonality	Monoclonal RM233
Formulation	50% Glycerol/PBS with 1% BSA and 0.09% sodium azide
Storage Instructions	Store at -20°C for one year. Avoid repeated freeze-thaw cycles.
Host	Rabbit
Uniprot ID	Q15418

Technical Details

Immunogen	A phospho-peptide corresponding to human phospho-Rsk1 (Thr359/Ser363)
Cross Reactivity	This antibody reacts to human RSK1 only when phosphorylated at Thr359/Ser363.
Isotype	Rabbit IgG
Form	Liquid
Concentration	0.5-1mg/ml, actual concentration vary by lot. Use suggested dilution ratio to decide dilution procedure.
Purification	Protein A affinity purified from an animal origin-free culture supernatant
Suggested Dilutions	<p>Dilute the sample so that the expected range of concentrations fall within the detection range of this kit.</p> <p>If the expected range of concentration is unknown, a pilot test should be conducted to decide the optimal dilution ratio for your samples.</p> <p>Some PubMed article(s) citing the expression level of this target are as follows:</p> <p>Boster Bio's internal QC testing used:</p> <p>Immunohistochemistry (IHC): 1:200-1:500 dilution</p> <p>WB: 1:1000-1:2000 dilution.</p>

Anti-Phospho-Rsk1 (Thr359/Ser363) RPS6KA1 Rabbit Monoclonal Antibody, Clone#RM233 (P01058-3) Images

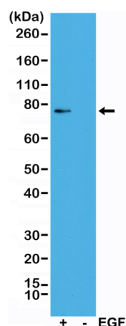


Figure 1. Western Blotting result
Western Blot of A431 cells treated (+) or nontreated (-) with EGF, using Anti-phospho-Rsk1 (Thr359/Ser363) RM233 at a 1:1000 dilution, showed a band of phosphorylated Rsk1 only in EGF treated A431 cells .

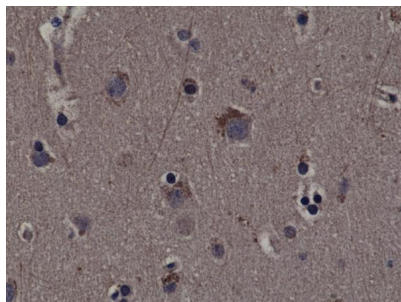


Figure 2. IHC result
Immunohistochemical staining of formalin fixed and paraffin embedded human cerebral cortex tissue sections using Anti-phospho-Rsk1 (Thr359/Ser363) RM233 at a 1:200 dilution.

Submit a product review to Biocompare.com

Submit a review of this product to Biocompare.com to receive a \$20 Amazon.com giftcard! Your reviews help your fellow scientists make the right decisions. Thank you for your contribution.



Anti-Phospho-Rsk1 (Thr359/Ser363) RPS6KA1 Rabbit Monoclonal Antibody, Clone#RM233