

## Anti-Phospho-IKB alpha (S36) Rabbit Monoclonal Antibody

Catalog Number: P01139-1

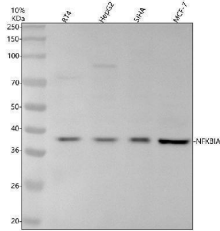
### Overview

Product Name	Anti-Phospho-IKB alpha (S36) Rabbit Monoclonal Antibody
Reactive Species	Human, Mouse
Description	Boster Bio Anti-Phospho-IKB alpha (S36) Rabbit Monoclonal Antibody catalog # P01139-1. Tested in WB, Flow Cytometry applications. This antibody reacts with Human, Mouse.
Application	Flow Cytometry, WB
Clonality	Monoclonal 25N33
Formulation	Rabbit IgG in stabilizing components, phosphate buffered saline, pH 7.4, 150mM NaCl, 0.02% sodium azide and 50% glycerol. *This antibody is supplied in a stabilized formulation. Compatibility with conjugation reactions depends on the chemistry of the conjugation method used. For conjugation methods that are not compatible with the stabilizing components present in this formulation, a carrier-free antibody format is required.
Storage Instructions	Store at -20°C for one year. For short term storage and frequent use, store at 4°C for up to one month. Avoid repeated freeze-thaw cycles.
Host	Rabbit
Uniprot ID	P25963

### Technical Details

Immunogen	A synthesized peptide derived from human Phospho-IKB alpha (S36)
Isotype	IgG
Form	Liquid
Concentration	0.5mg/ml
Purification	Affinity-chromatography
Suggested Dilutions	WB 1:500-2000 FC 1:50

## Anti-Phospho-IkB alpha (S36) Rabbit Monoclonal Antibody (P01139-1) Images



Western blot analysis of IkB Alpha/NFKBIA (Phospho-S36) using anti-IkB Alpha/NFKBIA (Phospho-S36) antibody (P01139-1). Electrophoresis was performed on a 10% SDS-PAGE gel at 80V (Stacking gel) / 120V (Resolving gel) for 2 hours. The sample well of each lane was loaded with 30 ug of sample under reducing conditions. Lane 1: human RT4 whole cell lysates, Lane 2: human HepG2 whole cell lysates, Lane 3: human SIHA whole cell lysates, Lane 4: human MCF-7 whole cell lysates. After electrophoresis, proteins were transferred to a nitrocellulose membrane at 150 mA for 50-90 minutes. Blocked the membrane with 5% non-fat milk/TBS for 1.5 hour at RT. The membrane was incubated with rabbit anti-IkB Alpha/NFKBIA (Phospho-S36) antigen affinity purified monoclonal antibody (P01139-1) at 1: 500 overnight at 4°C, then washed with TBS-0.1%Tween 3 times with 5 minutes each and probed with a goat anti-rabbit IgG-HRP secondary antibody at a dilution of 1:5000 for 1.5 hour at RT. The signal is developed using an ECL Plus Western Blotting Substrate (Catalog # AR1196-200) with Tanon 5200 system. A specific band was detected for IkB Alpha/NFKBIA (Phospho-S36) at approximately 39 kDa. The expected band size for IkB Alpha/NFKBIA (Phospho-S36) is at 36 kDa.

## 6 Publications Citing This Product

1. PubMed ID: 10.3389/fphys.2021.707344, Pioglitazone Ameliorates Renal Ischemia-Reperfusion Injury via Inhibition of NF-kappaB Activation and Inflammation in Rats
2. PubMed ID: 10.4314/tjpr.v16i11.13, Prophylactic effects of triptolide on colon cancer development in azoxymethane/dextran sulfate sodium-induced mouse model
3. PubMed ID: 10.1016/j.intimp.2021.108119, Nootkatone protects cartilage against degeneration in mice by inhibiting NF-kappaB signaling pathway

Visit [bosterbio.com/anti-phospho-ikb-alpha-s36-rabbit-monoclonal-antibody-p01139-1-boster.html](https://www.bosterbio.com/anti-phospho-ikb-alpha-s36-rabbit-monoclonal-antibody-p01139-1-boster.html) to see all 6 publications.

## Submit a product review to Biocompare.com

Submit a review of this product to Biocompare.com to receive a \$20 Amazon.com giftcard! Your reviews help your fellow scientists make the right decisions. Thank you for your contribution.



Anti-Phospho-IkB alpha (S36) Rabbit Monoclonal Antibody

For Research Use Only. Not for use in diagnostic procedures.