

Anti-Phospho-c-Kit (Y721) Antibody

Catalog Number: P01335

About KIT

MEF2C, also known as MADS box transcription enhancer factor 2, polypeptide C, is one of 4 MEF2 (myocyte enhancer factor 2) transcription factors that encode proteins for development of skeletal muscle and brain proliferation and differentiation (McDermott et al, 1993), along with regulating stress-response during cardiac hypertrophy in mammals (Wu et al, 2015). Phosphorylation of MEF2C at serine 59 has been shown to be negatively regulated by integrin-linked kinase (ILK) (Dong et al, 2015). Recently, high MEF2C expression has been associated with a subset of acute myeloid leukemia (AML) patients with adverse-risk disease features and poor outcomes (Laszlo et al, 2015). Phosphorylation of MEF2C at serine 222 may play a key role in MEF2C signaling.

Overview

Product Name	Anti-Phospho-c-Kit (Y721) Antibody
Reactive Species	Human, Mouse, Rat
Description	Boster Bio Anti-Phospho-c-Kit (Y721) Antibody catalog # P01335. Tested in ELISA, WB applications. This antibody reacts with Human, Mouse, Rat.
Application	ELISA, WB
Clonality	Polyclonal 608
Formulation	Liquid in PBS containing 50% glycerol, 0.5% BSA and 0.02% sodium azide.
Storage Instructions	Store at -20°C for one year. For short term storage and frequent use, store at 4°C for up to one month. Avoid repeated freeze-thaw cycles.
Host	Rabbit
Uniprot ID	P10721

Technical Details

Immunogen	Synthesized peptide derived from human c-Kit around the phosphorylation site of Y721.
Predicted Reactive Species	Bovine, Chicken, Guinea Pig, Mouse, Primate, Rat, Sheep
Cross Reactivity	No cross reactivity with other proteins.
Isotype	IgG
Form	Liquid
Concentration	1 mg/ml
Purification	Immunogen affinity purified

Suggested Dilutions

Dilute the sample so that the expected range of concentrations fall within the detection range of this kit.

If the expected range of concentration is unknown, a pilot test should be conducted to decide the optimal dilution ratio for your samples.

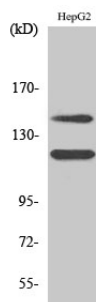
Some PubMed article(s) citing the expression level of this target are as follows:

Boster Bio's internal QC testing used:

WB, 1:500-1:2000

ELISA 1:10000

Anti-Phospho-c-Kit (Y721) Antibody (P01335) Images



Western blot analysis of various cells using Phospho-c-Kit (Y721) Polyclonal Antibody

1 Publications Citing This Product

1. PubMed ID: 22294837, Bin Wt, Ma Lm, Xu Q, Shi Xi. World J Gastroenterol. 2012 Jan 28;18(4):309-22. Doi: 10.3748/Wjg.V18.I4.309. Embryonic Hepatocyte Transplantation For Hepatic Cirrhosis: Efficacy And Mechanism Of Action.

Visit bosterbio.com/anti-phospho-c-kit-y721-antibody-p01335-boster.html to see all 1 publications.

Submit a product review to Biocompare.com

Submit a review of this product to Biocompare.com to receive a \$20 Amazon.com giftcard! Your reviews help your fellow scientists make the right decisions. Thank you for your contribution.



Anti-Phospho-c-Kit (Y721) Antibody