

## Anti-Phospho-PKR (T446) EIF2AK2 Rabbit Monoclonal Antibody

Catalog Number: P01384

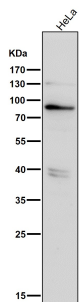
### Overview

Product Name	Anti-Phospho-PKR (T446) EIF2AK2 Rabbit Monoclonal Antibody
Reactive Species	Human
Description	Boster Bio Anti-Phospho-PKR (T446) EIF2AK2 Rabbit Monoclonal Antibody catalog # P01384. Tested in WB, IHC, IP applications. This antibody reacts with Human.
Application	IP, IHC, WB
Clonality	Monoclonal BIC-5
Formulation	Rabbit IgG in stabilizing components, phosphate buffered saline, pH 7.4, 150mM NaCl, 0.02% sodium azide and 50% glycerol. *This antibody is supplied in a stabilized formulation. Compatibility with conjugation reactions depends on the chemistry of the conjugation method used. For conjugation methods that are not compatible with the stabilizing components present in this formulation, a carrier-free antibody format is required.
Storage Instructions	Store at -20°C for one year. For short term storage and frequent use, store at 4°C for up to one month. Avoid repeated freeze-thaw cycles.
Host	Rabbit
Uniprot ID	P19525

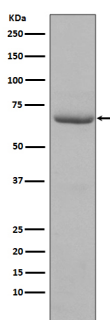
### Technical Details

Immunogen	A synthesized peptide derived from human Phospho-PKR (T446)
Isotype	Rabbit IgG
Form	Liquid
Concentration	0.5mg/ml
Purification	Affinity-chromatography
Suggested Dilutions	WB 1:500-2000 IHC 1:50-200 IP 1:50

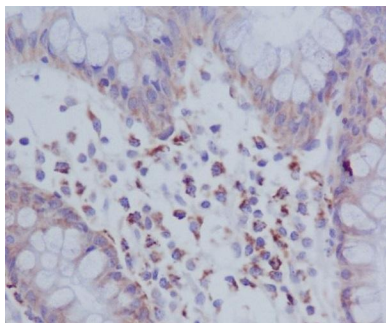
## Anti-Phospho-PKR (T446) EIF2AK2 Rabbit Monoclonal Antibody (P01384) Images



All lanes use the Antibody at 1:3K dilution for 1 hour at room temperature.



Western blot analysis of PKR phosphorylation expression in HeLa cell lysate treated with Calyculin A and TNF-alpha.



Immunohistochemical analysis of paraffin-embedded human colon, using Phospho-PKR (T446) Antibody.

### Submit a product review to [Biocompare.com](https://www.biocompare.com)

Submit a review of this product to [Biocompare.com](https://www.biocompare.com) to receive a \$20 Amazon.com giftcard! Your reviews help your fellow scientists make the right decisions. Thank you for your contribution.



Anti-Phospho-PKR (T446) EIF2AK2 Rabbit Monoclonal Antibody

For Research Use Only. Not for use in diagnostic procedures.