

## Anti-Phospho-TIP60 (S86) KAT5 Antibody

Catalog Number: P01393

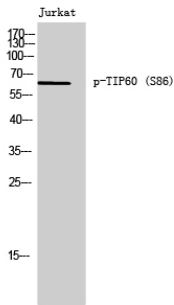
### Overview

Product Name	Anti-Phospho-TIP60 (S86) KAT5 Antibody
Reactive Species	Human, Mouse
Description	Boster Bio Anti-Phospho-TIP60 (S86) KAT5 Antibody catalog # P01393. Tested in WB, ELISA, IHC applications. This antibody reacts with Human, Mouse.
Application	ELISA, IHC, WB
Clonality	Polyclonal
Formulation	Liquid in PBS containing 50% glycerol, 0.5% stabilizing protein and 0.02% sodium azide. This antibody is supplied in a stabilized formulation. Compatibility with conjugation reactions depends on the chemistry of the conjugation method used. For conjugation methods that are not compatible with the stabilizing components present in this formulation, a carrier-free antibody format is required.
Storage Instructions	Store at -20°C for one year. For short term storage and frequent use, store at 4°C for up to one month. Avoid repeated freeze-thaw cycles.
Host	Rabbit
Uniprot ID	Q92993

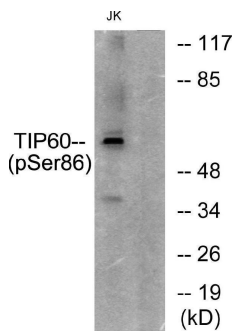
### Technical Details

Immunogen	The antiserum was produced against synthesized peptide derived from human TIP60 around the phosphorylation site of Ser86. AA range:52-101
Cross Reactivity	No cross reactivity with other proteins.
Isotype	IgG
Form	Liquid
Concentration	1 mg/ml
Purification	Immunogen affinity purified
Suggested Dilutions	WB 1:500-2000 IHC 1:50-300 ELISA 1:2000-20000

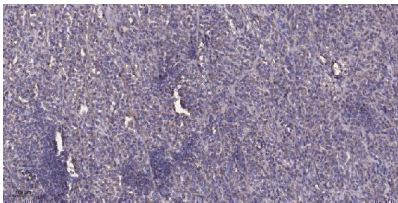
## Anti-Phospho-TIP60 (S86) KAT5 Antibody (P01393) Images



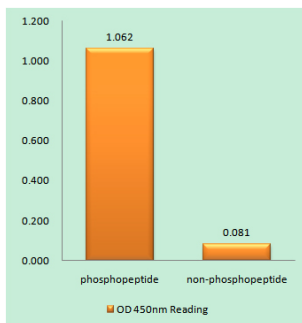
Western Blot analysis of Jurkat cells using Phospho-TIP60 (S86) Polyclonal Antibody



Western blot analysis of lysates from Jurkat cells, using TIP60 (Phospho-Ser86) Antibody. The lane on the right is blocked with the phospho peptide.



Immunohistochemical analysis of paraffin-embedded human Colon cancer. 1, Antibody was diluted at 1:200 (4° overnight). 2, Tris-EDTA, pH9.0 was used for antigen retrieval. 3, Secondary antibody was diluted at 1:200 (room temperature, 45min).



Enzyme-Linked Immunosorbent Assay (Phospho-ELISA) for Immunogen Phosphopeptide (Phospho-left) and Non-Phosphopeptide (Phospho-right), using TIP60 (Phospho-Ser86) Antibody

### Submit a product review to [Biocompare.com](https://www.biocompare.com)

Submit a review of this product to [Biocompare.com](https://www.biocompare.com) to receive a \$20 Amazon.com giftcard! Your reviews help your fellow scientists make the right decisions. Thank you for your contribution.



Anti-Phospho-TIP60 (S86) KAT5 Antibody

For Research Use Only. Not for use in diagnostic procedures.