

## Anti-Phospho-Lyn (Y396) Rabbit Monoclonal Antibody

Catalog Number: P01424-1

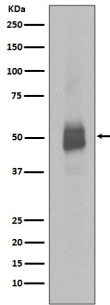
### Overview

Product Name	Anti-Phospho-Lyn (Y396) Rabbit Monoclonal Antibody
Reactive Species	Human, Mouse
Description	Boster Bio Anti-Phospho-Lyn (Y396) Rabbit Monoclonal Antibody catalog # P01424-1. Tested in WB, ICC/IF, Flow Cytometry applications. This antibody reacts with Human, Mouse.
Application	Flow Cytometry, IF, ICC, WB
Clonality	Monoclonal IFI-12
Formulation	Rabbit IgG in stabilizing components, phosphate buffered saline, pH 7.4, 150mM NaCl, 0.02% sodium azide and 50% glycerol. *This antibody is supplied in a stabilized formulation. Compatibility with conjugation reactions depends on the chemistry of the conjugation method used. For conjugation methods that are not compatible with the stabilizing components present in this formulation, a carrier-free antibody format is required.
Storage Instructions	Store at -20°C for one year. For short term storage and frequent use, store at 4°C for up to one month. Avoid repeated freeze-thaw cycles.
Host	Rabbit
Uniprot ID	P07948

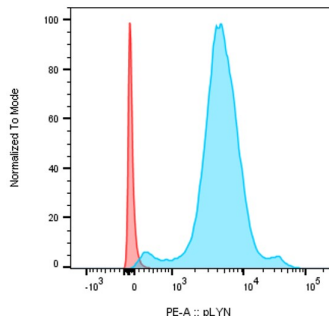
### Technical Details

Immunogen	A synthesized peptide derived from human Phospho-Lyn (Y396)
Isotype	Rabbit IgG
Form	Liquid
Concentration	0.5mg/ml
Purification	Affinity-chromatography
Suggested Dilutions	WB 1:500-2000 ICC/IF 1:50-200 FC 1:20

## Anti-Phospho-Lyn (Y396) Rabbit Monoclonal Antibody (P01424-1) Images



Western blot analysis of Lyn phosphorylation expression in Jurkat cell lysate treated with Pervanadate.



Flow Cytometry analysis of B cells using anti-Phospho-Lyn (Y396) rabbit monoclonal antibody (P01424-1). Overlay histogram showing B cells stained with P01424-1 (Blue line). To facilitate intracellular staining, cells were fixed with 4% paraformaldehyde and permeabilized with permeabilization buffer. The cells were blocked with 5% FBS. And then incubated with rabbit anti-Phospho-Lyn (Y396) rabbit monoclonal antibody (P01424-1) at 0.25  $\mu$ l/1x10<sup>6</sup> cells 50min RT. F(ab')<sub>2</sub>-Donkey anti-Rabbit IgG (H+L), PE 0.1  $\mu$ l/1x10<sup>6</sup> was used as secondary antibody for 30 minutes at 20°C. Isotype control antibody (Green line) was rabbit IgG (1  $\mu$ g/1x10<sup>6</sup>) used under the same conditions. Unlabelled sample without incubation with primary antibody and secondary antibody (Red line) was used as a blank control.

### Submit a product review to Biocompare.com

Submit a review of this product to Biocompare.com to receive a \$20 Amazon.com giftcard! Your reviews help your fellow scientists make the right decisions. Thank you for your contribution.



Anti-Phospho-Lyn (Y396) Rabbit Monoclonal Antibody

For Research Use Only. Not for use in diagnostic procedures.