

Anti-Phospho-S6K1 (T421 + S424) RPS6KB1 Rabbit Monoclonal Antibody

Catalog Number: P01475

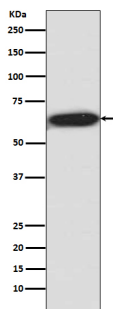
Overview

Product Name	Anti-Phospho-S6K1 (T421 + S424) RPS6KB1 Rabbit Monoclonal Antibody
Reactive Species	Human, Rat
Description	Boster Bio Anti-Phospho-S6K1 (T421 + S424) RPS6KB1 Rabbit Monoclonal Antibody catalog # P01475. Tested in WB, IP applications. This antibody reacts with Human, Rat.
Application	IP, WB
Clonality	Monoclonal BHD-18
Formulation	Rabbit IgG in stabilizing components, phosphate buffered saline, pH 7.4, 150mM NaCl, 0.02% sodium azide and 50% glycerol. *This antibody is supplied in a stabilized formulation. Compatibility with conjugation reactions depends on the chemistry of the conjugation method used. For conjugation methods that are not compatible with the stabilizing components present in this formulation, a carrier-free antibody format is required.
Storage Instructions	Store at -20°C for one year. For short term storage and frequent use, store at 4°C for up to one month. Avoid repeated freeze-thaw cycles.
Host	Rabbit
Uniprot ID	P23443

Technical Details

Immunogen	A synthesized peptide derived from human Phospho-S6K1 (T421 + S424)
Isotype	Rabbit IgG
Form	Liquid
Concentration	0.5mg/ml
Purification	Affinity-chromatography
Suggested Dilutions	WB 1:500-2000 IP 1:30

Anti-Phospho-S6K1 (T421 + S424) RPS6KB1 Rabbit Monoclonal Antibody (P01475) Images



Western blot analysis of SK61 phosphorylation expression in HEK293 cell lysate.

1 Publications Citing This Product

1. PubMed ID: 33982772, Xu R,Zhang Y,Li A,Ma Y,Cai W,Song L,Xie Y,Zhou S,Cao W,Tang X.LY294002 enhances the chemosensitivity of liver cancer to oxaliplatin by blocking the PI3K/AKT/HIF1alpha pathway.Mol Med Rep.2021 Jul;24(1):508.doi:10.3892/mmr.2021.12147.Epub 2021 May 13.PMID:33982772.

Visit bosterbio.com/anti-phospho-s6k1-t421-s424-rabbit-monoclonal-antibody-p01475-boster.html to see all 1 publications.

Submit a product review to Biocompare.com

Submit a review of this product to Biocompare.com to receive a \$20 Amazon.com giftcard! Your reviews help your fellow scientists make the right decisions. Thank you for your contribution.



Anti-Phospho-S6K1 (T421 + S424) RPS6KB1 Rabbit Monoclonal Antibody

For Research Use Only. Not for use in diagnostic procedures.