

## Anti-Phospho-Shb (Tyr246) Antibody

Catalog Number: P02109

### About SHB

Transcription factor involved in the regulation of the insulin signaling pathway. Binds to insulin-response elements (IREs) and can activate transcription of IGFBP1. Down-regulates expression of HIF1A and suppresses hypoxia-induced transcriptional activation of HIF1A-modulated genes. Also involved in negative regulation of the cell cycle.

Di Maira G, et al. (2005) Cell Death Differ; 12(6): 668-77.

Essers MA, et al. EMBO J 2004 Nov. 11.

Brownawell AM, (2001) Mol Cell Biol; 21(10): 3534-46.

Kops GJ, et al. (1999) Nature; 398(6728): 630-4.

### Overview

Product Name	Anti-Phospho-Shb (Tyr246) Antibody
Reactive Species	Human, Mouse
Description	Boster Bio Anti-Phospho-Shb (Tyr246) Antibody (Catalog # P02109). Tested in WB, ELISA applications. This antibody reacts with Human, Mouse.
Application	ELISA, WB
Clonality	Polyclonal
Formulation	Liquid in PBS containing 50% glycerol, 0.5% BSA and 0.02% sodium azide.
Storage Instructions	Store at -20°C for one year. For short term storage and frequent use, store at 4°C for up to one month. Avoid repeated freeze-thaw cycles.
Host	Rabbit
Uniprot ID	Q15464

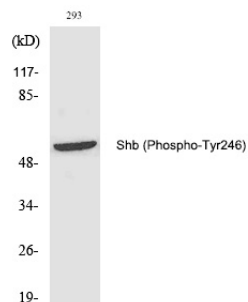
### Technical Details

Immunogen	Synthesized peptide derived from human Shb around the phosphorylation site of Y246.
Predicted Reactive Species	Bovine, Chicken, Xenopus Laevis, Xenopus Tropicalis, Zebrafish
Form	Liquid
Concentration	1 mg/ml
Purification	The antibody was affinity-purified from rabbit antiserum by affinity-chromatography using epitope-specific immunogen.

Suggested Dilutions

Western blotting: 1/500 - 1/2000  
ELISA: 1/10000  
Not yet tested in other applications.

## Anti-Phospho-Shb (Tyr246) Antibody (P02109) Images



Western Blot analysis of 293 cells using Phospho-Shb (Y246) Polyclonal antibody

### Submit a product review to Biocompare.com

Submit a review of this product to Biocompare.com to receive a \$20 Amazon.com giftcard! Your reviews help your fellow scientists make the right decisions. Thank you for your contribution.



Anti-Phospho-Shb (Tyr246) Antibody