

Anti-Phospho-MARK2 T595 Antibody

Catalog Number: P02117

About MARK2

MARK2 pT595 antibody is suitable for Cancer, Immunology and Nuclear Signaling research. This antibody recognizes a regulatory phosphorylation on a kinase that is critical to regulation of microtubules, cell cycle and immune responses. MARK2 refers to MAP/microtubule affinity-regulating kinase 2 isoform a [Homo sapiens]. EMK (ELKL Motif Kinase) is a small family of ser/thr protein kinases involved in the control of cell polarity, microtubule stability and cancer. Several cDNA clones have been isolated that encode two isoforms of the human ser/thr protein kinase EMK1 called MARK2. These isoforms were characterized by the presence of a 162-bp alternative exon that gives rise to two forms, one containing the exon and the other one lacking it. Both forms were found to be co-expressed in a number of selected cell lines and tissue samples. Human MARK2 was shown to be encoded by a single mRNA that is ubiquitously expressed. This transcription variant includes the alternative exon in the coding region and therefore codes for a longer protein. Multiple splice variants exist for this protein.

Overview

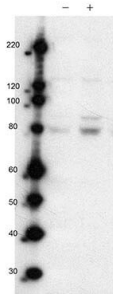
Product Name	Anti-Phospho-MARK2 T595 Antibody
Reactive Species	Human
Description	Boster Bio Anti-Phospho-MARK2 T595 Antibody (Catalog # P02117). Tested in ELISA, WB applications. This antibody reacts with Human.
Application	ELISA, IF, WB
Clonality	Polyclonal
Formulation	0.02 M Potassium Phosphate, 0.15 M Sodium Chloride, pH 7.2, 0.01% (w/v) Sodium Azide
Storage Instructions	Store vial at -20°C prior to opening. Aliquot contents and freeze at -20°C or below for extended storage. Avoid cycles of freezing and thawing. Centrifuge product if not completely clear after standing at room temperature. This product is stable for several weeks at 4°C as an undiluted liquid. Dilute only prior to immediate use. Expiration date is one (1) year from date of opening. (Ship on dry ice.)
Host	Rabbit
Uniprot ID	Q7KZI7

Technical Details

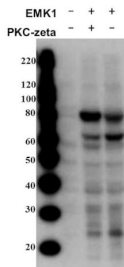
Immunogen	This affinity purified antibody was prepared from whole rabbit serum produced by repeated immunizations with a synthetic peptide corresponding to amino acids surrounding T595 of Human MARK2 isoform a. The immunogen peptide was phosphorylated at the residue corresponding to T595.
Predicted Reactive Species	Bovine, Canine
Cross Reactivity	No cross reactivity with other proteins.

Isotype	IgG
Form	Liquid (sterile filtered)
Concentration	1.0 mg/mL by UV absorbance at 280 nm
Purification	MARK2 pT595 affinity purified antibody is directed against the phosphorylated form of human MARK2 at the pT595 residue. The product was affinity purified from monospecific antiserum by immunoaffinity chromatography. Antiserum was first purified against the phosphorylated form of the immunizing peptide. The resultant affinity purified antibody was then cross-adsorbed against the non-phosphorylated form of the immunizing peptide. Reactivity occurs against human MARK2 pT595 protein and the antibody is specific for the phosphorylated form of the protein. Reactivity with non-phosphorylated human MARK2 is minimal by ELISA. Expect at least partial reactivity with other isoforms of MARK. The immunogen sequence is present in all forms identified to date and localizes to T595 on MARK2, T587 on MARK3, T591 on MARK1 and T568 on MARK4. A BLAST analysis was used to suggest reactivity with this protein from human, dog, bovine, mouse and rat sources based on 100% homology for the immunogen sequence. Cross-reactivity with MARK2 homologues from other sources has not been determined.
Suggested Dilutions	ELISA: 1:1,000 - 1:3,000 IF Microscopy: User optimized WB: 1:250 - 1:1,000 Anti-MARK2pT595 antibody has been tested for use in ELISA and western blot. Specific conditions for reactivity should be optimized by the end user. Expect a band at approximately 83 kDa corresponding to MARK2 by western blotting in the appropriate cell lysate or extract.

Anti-Phospho-MARK2 T595 Antibody (P02117) Images



Western Blot of Rabbit anti-MARK2pT595 antibody. Lane 1: wild type Jurkat cells. Lane 2: wild type Jurkat cells stimulated with CD3/CD28 (T-cell receptor stimulation). Load: 35 μ g per lane. Primary antibody: MARK2 pT595 antibody at 1:500 for overnight at 4°C. Secondary antibody: IRDye800™ rabbit secondary antibody at 1:10,000 for 45 min at RT. Block: 5% BLOTTO overnight at 4°C. Predicted/Observed size: ~83 kDa for MARK2pT595.



Western Blot of Rabbit anti-MARK2pT595 antibody. Lane 1: 293T cells untransfected. Lane 2: 293T cells transfected with MARK2 (EMK1) and PKC-zeta. Lane 3: 293T cells transfected with MARK2 (EMK1). Load: 35 μ g per lane. Primary antibody: MARK2pT595 antibody at 1:1000 for overnight at 4°C. Secondary antibody: IRDye800™ rabbit secondary antibody at 1:10,000 for 45 min at RT. Block: 5% BLOTTO overnight at 4°C. Predicted/Observed size: ~83kDa kDa for MARK2 pT595. Other band(s): MARK2pT595 splice variants and isoforms.

Submit a product review to Biocompare.com

Submit a review of this product to Biocompare.com to receive a \$20 Amazon.com giftcard! Your reviews help your fellow scientists make the right decisions. Thank you for your contribution.



Anti-Phospho-MARK2 T595 Antibody

For Research Use Only. Not for use in diagnostic procedures.