

Anti-Phospho-G3BP1 (S232) Antibody

Catalog Number: P02199-1

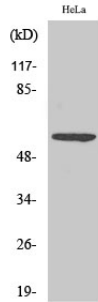
Overview

| | |
|----------------------|---|
| Product Name | Anti-Phospho-G3BP1 (S232) Antibody |
| Reactive Species | Human, Mouse |
| Description | Boster Bio Anti-Phospho-G3BP1 (S232) Antibody catalog # P02199-1. Tested in WB, IHC, IF, ELISA applications. This antibody reacts with Human, Mouse. |
| Application | ELISA, IF, IHC, WB |
| Clonality | Polyclonal |
| Formulation | Liquid in PBS containing 50% glycerol, 0.5% stabilizing protein and 0.02% sodium azide. This antibody is supplied in a stabilized formulation. Compatibility with conjugation reactions depends on the chemistry of the conjugation method used. For conjugation methods that are not compatible with the stabilizing components present in this formulation, a carrier-free antibody format is required. |
| Storage Instructions | Store at -20°C for one year. For short term storage and frequent use, store at 4°C for up to one month. Avoid repeated freeze-thaw cycles. |
| Host | Rabbit |
| Uniprot ID | Q13283 |

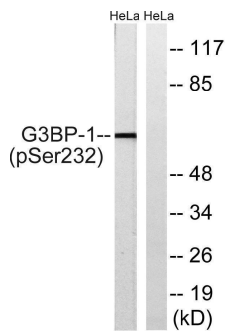
Technical Details

| | |
|---------------------|--|
| Immunogen | The antiserum was produced against synthesized peptide derived from human G3BP-1 around the phosphorylation site of Ser232. AA range:216-248 |
| Cross Reactivity | No cross reactivity with other proteins. |
| Isotype | IgG |
| Form | Liquid |
| Concentration | 1 mg/ml |
| Purification | The antibody was affinity-purified from rabbit antiserum by affinity-chromatography using an epitope-specific immunogen. |
| Suggested Dilutions | WB 1:500-1:2000 IHC 1:100-1:300 ELISA 1:5000 IF 1:50-200 |

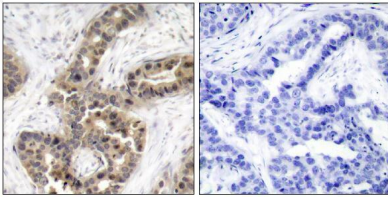
Anti-Phospho-G3BP1 (S232) Antibody (P02199-1) Images



Western Blot analysis of various cells using Phospho-G3BP1 (S232) Polyclonal Antibody



Western blot analysis of extracts from HeLa cells, using G3BP-1 (Phospho-Ser232) Antibody. The lane on the right is treated with the synthesized peptide.



Immunohistochemistry analysis of paraffin-embedded human breast cancer, using G3BP-1 (Phospho-Ser232) Antibody. The picture on the right is blocked with the G3BP-1 (Phospho-Ser232) peptide.

Submit a product review to [Biocompare.com](https://www.biocompare.com)

Submit a review of this product to [Biocompare.com](https://www.biocompare.com) to receive a \$20 Amazon.com giftcard! Your reviews help your fellow scientists make the right decisions. Thank you for your contribution.



Anti-Phospho-G3BP1 (S232) Antibody

For Research Use Only. Not for use in diagnostic procedures.