

## Anti-Phospho-IL-7 Receptor Alpha Chain Y449 Antibody

Catalog Number: P02222

### About IL7R

This antibody is suitable for Cancer, Immunology and Nuclear Signaling research. Interleukin-7 is a glycoprotein involved in the regulation of lymphopoiesis. Response of cells to IL7 is dependent on the presence of the interleukin 7 receptor (IL7R); the active receptor is an alpha/gamma chain heterodimer. The gamma(c) chain, which also associates with the interleukin-2 receptor, serves primarily to activate signal transduction by the IL7R complex, while the alpha chain of IL7R determines specific signaling events through its association with cytoplasmic signaling molecules. The human and mouse sequence is nearly identical. In humans, severe combined immunodeficiency is caused by genetic defects in IL-7 receptor. The tyrosine residue at the 449 position is a critical signaling site of the intracellular domain of IL-7 receptor. This site is rapidly phosphorylated by janus kinases after the IL-7 receptor is engaged. IL-7 Receptor Alpha Chain phospho Y449 Antibody is ideal for investigators involved in Cell Signaling, Signal Transduction and Immunology research.

### Overview

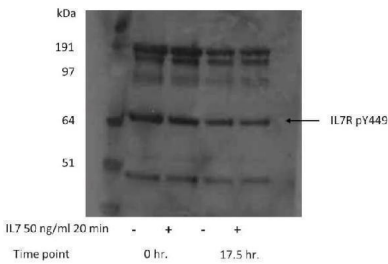
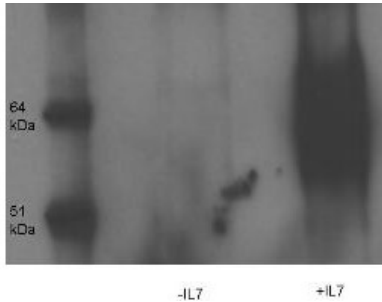
Product Name	Anti-Phospho-IL-7 Receptor Alpha Chain Y449 Antibody
Reactive Species	Human, Mouse, Rat
Description	Boster Bio Anti-Phospho-IL-7 Receptor Alpha Chain Y449 Antibody (Catalog # P02222). Tested in ELISA, WB applications. This antibody reacts with Human, Mouse, Rat.
Application	ELISA, IHC, WB
Clonality	Polyclonal
Formulation	0.02 M Potassium Phosphate, 0.15 M Sodium Chloride, pH 7.2, 0.01% (w/v) Sodium Azide
Storage Instructions	Store IL-7 Receptor Alpha Chain phospho Y449 Antibody at -20°C prior to opening. Aliquot contents and freeze at -20°C or below for extended storage. Avoid cycles of freezing and thawing. Centrifuge product if not completely clear after standing at room temperature. This product is stable for several weeks at 4°C as an undiluted liquid. Dilute only prior to immediate use. Expiration date is one (1) year from date of opening. (Ship on dry ice.)
Host	Rabbit
Uniprot ID	P16872

### Technical Details

Immunogen	This affinity purified antibody was prepared from whole rabbit serum produced by repeated immunizations with a synthetic peptide corresponding to residues near Y449 of mouse IL-7 protein.
Predicted Reactive Species	Bovine, Canine
Isotype	IgG
Form	Liquid (sterile filtered)

Concentration	0.72 mg/mL by UV absorbance at 280 nm
Purification	This product was affinity purified from monospecific antiserum by immunoaffinity chromatography using phospho-peptide coupled to agarose beads followed by solid phase adsorption against non-phospho-peptide. This antibody is specific for mouse IL-7 protein phosphorylated at Y449. A BLAST analysis was used to suggest cross-reactivity with IL-7 from human, mouse and rat sources based on 100% homology with the immunizing sequence. Cross-reactivity with IL-7 from other sources has not been determined.
Suggested Dilutions	ELISA: 1:5,000 - 1:50,000 IHC: User optimized WB: 1:10,000 This affinity purified antibody has been tested for use in ELISA, immunoprecipitation, and western blotting. Specific conditions for reactivity should be optimized by the end user. Expect a band approximately 55 kDa in size corresponding to phosphorylated IL-7 by western blotting in the appropriate cell lysate or extract. This phospho-specific polyclonal antibody reacts with mouse IL-7 pY449 and shows minimal reactivity by ELISA against the non-phosphorylated form of the immunizing peptide.

## Anti-Phospho-IL-7 Receptor Alpha Chain Y449 Antibody (P02222) Images



### Submit a product review to Biocompare.com

Submit a review of this product to Biocompare.com to receive a \$20 Amazon.com giftcard! Your reviews help your fellow scientists make the right decisions. Thank you for your contribution.



Anti-Phospho-IL-7 Receptor Alpha Chain Y449 Antibody

For Research Use Only. Not for use in diagnostic procedures.