

Anti-Phospho-GluR1 (S845) GRIA1 Rabbit Monoclonal Antibody

Catalog Number: P02677

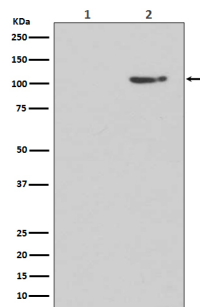
Overview

| | |
|----------------------|--|
| Product Name | Anti-Phospho-GluR1 (S845) GRIA1 Rabbit Monoclonal Antibody |
| Reactive Species | Human, Mouse, Rat |
| Description | Boster Bio Anti-Phospho-GluR1 (S845) GRIA1 Rabbit Monoclonal Antibody catalog # P02677. Tested in WB application. This antibody reacts with Human, Mouse, Rat. |
| Application | WB |
| Clonality | Monoclonal GFH-7 |
| Formulation | Rabbit IgG in stabilizing components, phosphate buffered saline, pH 7.4, 150mM NaCl, 0.02% sodium azide and 50% glycerol. *This antibody is supplied in a stabilized formulation. Compatibility with conjugation reactions depends on the chemistry of the conjugation method used. For conjugation methods that are not compatible with the stabilizing components present in this formulation, a carrier-free antibody format is required. |
| Storage Instructions | Store at -20°C for one year. For short term storage and frequent use, store at 4°C for up to one month. Avoid repeated freeze-thaw cycles. |
| Host | Rabbit |
| Uniprot ID | P42261 |

Technical Details

| | |
|---------------------|--|
| Immunogen | A synthesized peptide derived from human GluR1 |
| Isotype | Rabbit IgG |
| Form | Liquid |
| Concentration | 0.5mg/ml |
| Purification | Affinity-chromatography |
| Suggested Dilutions | WB 1:500-2000 |

Anti-Phospho-GluR1 (S845) GRIA1 Rabbit Monoclonal Antibody (P02677) Images



Western blot analysis of Phospho-GluR1 (S845) expression in (1) Human brain lysate treated with Lambda phosphatase lysate; (2) Human brain lysate.

Submit a product review to Biocompare.com

Submit a review of this product to Biocompare.com to receive a \$20 Amazon.com giftcard! Your reviews help your fellow scientists make the right decisions. Thank you for your contribution.



Anti-Phospho-GluR1 (S845) GRIA1 Rabbit Monoclonal Antibody

For Research Use Only. Not for use in diagnostic procedures.