

Anti-Phospho-AMPA Receptor (GluR 1) (Ser845) GRIA1 Rabbit Monoclonal Antibody, Clone#RM296

Catalog Number: P02677-2

Overview

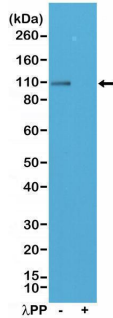
Product Name	Anti-Phospho-AMPA Receptor (GluR 1) (Ser845) GRIA1 Rabbit Monoclonal Antibody, Clone#RM296
Reactive Species	Human
Description	Boster Bio Anti-Phospho-AMPA Receptor (GluR 1) (Ser845) GRIA1 Rabbit Monoclonal Antibody, Clone#RM296 (Catalog # P02677-2). Tested in IHC, WB applications. This antibody reacts with Human.
Application	IHC, WB
Clonality	Monoclonal RM296
Formulation	50% Glycerol/PBS with 1% stabilizing protein and 0.09% sodium azide This antibody is supplied in a stabilized formulation. Compatibility with conjugation reactions depends on the chemistry of the conjugation method used. For conjugation methods that are not compatible with the stabilizing components present in this formulation, a carrier-free antibody format is required.
Storage Instructions	Store at -20°C for one year. Avoid repeated freeze-thaw cycles.
Host	Rabbit
Uniprot ID	P42261

Technical Details

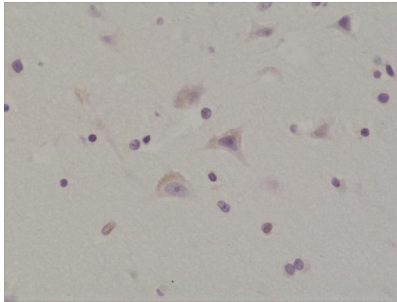
Immunogen	A phospho-peptide corresponding to human Phospho-Glutamate Receptor 1 (GluR1) (Ser845)
Predicted Reactive Species	Mouse, Rat
Cross Reactivity	Reacts to human GluR1 AMPA Receptor only when phosphorylated at Ser845. No cross-reactivity to GluR1 that is not phosphorylated at Ser845. May also react to mouse or rat Phospho-AMPA Receptor (GluR1) (Ser845) as predicted by immunogen homology.
Isotype	Rabbit IgG
Form	Liquid
Concentration	0.5-1mg/ml, actual concentration vary by lot. Use suggested dilution ratio to decide dilution procedure.
Purification	Protein A affinity purified from an animal origin-free culture supernatant
Suggested Dilutions	Immunohistochemistry (IHC): 1:500-1:1000 dilution

WB: 1:1000-1:2000 dilution.

Anti-Phospho-AMPA Receptor (GluR 1) (Ser845) GRIA1 Rabbit Monoclonal Antibody, Clone#RM296 (P02677-2) Images



Western Blotting result Western Blot of mouse brain tissue lysate, non-treated (-) or dephosphorylated (+) with Lambda Protein Phosphatase (PP), using Anti-Phospho-AMPA Receptor (GluR 1) (Ser845) rabbit monoclonal antibody (clone RM296) at a 1:200 dilution.



IHC result Immunohistochemical staining of formalin fixed and paraffin embedded human brain tissue section using Anti-Phospho-AMPA Receptor (GluR 1) (Ser845) rabbit monoclonal antibody (clone RM296) at a 1:200 dilution.

Submit a product review to Biocompare.com

Submit a review of this product to Biocompare.com to receive a \$20 Amazon.com giftcard! Your reviews help your fellow scientists make the right decisions. Thank you for your contribution.



Anti-Phospho-AMPA Receptor (GluR 1) (Ser845) GRIA1 Rabbit Monoclonal Antibody, Clone#RM296

For Research Use Only. Not for use in diagnostic procedures.