

Anti-Phospho-Thr356 PRAS40 Antibody, Phospho-Specific

Catalog Number: P03629

About AKT1S1

PRAS40 (proline-rich Akt/PKB substrate of 40 kDa) acts at the intersection of the Akt- and mTOR-mediated signaling pathways and its phosphorylation by Akt and by mTORC1 results in dissociation of PRAS40 from mTORC1 which may relieve an inhibitory constraint on mTORC1 activity (Wiza et al., 2012). Phosphorylation of PRAS40 by Akt and association with 14-3-3 has also been indicated to be crucial for insulin to stimulate mTOR. (Vander Haar et al., 2007). The primary function of PRAS40 in vivo in Drosophila has been shown to regulate TORC1 activity, and not to act as a downstream target and effector of TORC1 (Pallares et al., 2012).

Overview

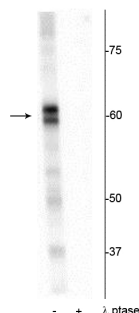
Product Name	Anti-Phospho-Thr356 PRAS40 Antibody, Phospho-Specific
Reactive Species	Drosophila
Description	Boster Bio Anti-Phospho-Thr356 PRAS40 Antibody, Phospho-Specific (Catalog # P03629). Tested in WB applications. This antibody reacts with Drosophila.
Application	WB
Clonality	Polyclonal 608
Formulation	10 mM HEPES (pH 7.5), 150 mM NaCl, 100 µg per ml BSA and 50% glycerol.
Storage Instructions	Storage at -20°C is recommended, as aliquots may be taken without freeze/thawing due to presence of 50% glycerol. Stable for at least 1 year at -20°C. After date of receipt, stable for at least 1 year at -20°C.
Host	Rabbit
Uniprot ID	Q7JXA2

Technical Details

Immunogen	Synthetic phospho-peptide corresponding to amino acid residues surrounding Thr356 of Drosophila PRAS40, conjugated to keyhole limpet hemocyanin (KLH). Immunogen species is Drosophila.
Predicted Reactive Species	Bovine, Canine, Chicken, Human, Mouse
Cross Reactivity	No cross reactivity with other proteins.
Isotype	IgG
Form	Liquid
Concentration	0.5-1mg/ml, actual concentration vary by lot. Use suggested dilution ratio to decide dilution procedure.

Purification	Prepared from pooled rabbit serum by affinity purification via sequential chromatography on phospho and non-phosphopeptide affinity columns.
Suggested Dilutions	<p>Dilute the sample so that the expected range of concentrations fall within the detection range of this kit.</p> <p>If the expected range of concentration is unknown, a pilot test should be conducted to decide the optimal dilution ratio for your samples.</p> <p>Some PubMed article(s) citing the expression level of this target are as follows:</p> <p>Boster Bio's internal QC testing used:</p> <p>WB: 1:1000</p>

Anti-Phospho-Thr356 PRAS40 Antibody, Phospho-Specific (P03629) Images



Western blot of *Drosophila* lysate showing specific immunolabeling of the ~60 kDa PRAS40 protein phosphorylated at Thr³⁵⁶ in the first lane (-). Phosphospecificity is shown in the second lane (+) where the immunolabeling is completely eliminated by blot treatment with lambda phosphatase (gamma-Ptase, 1200 units for 30 minutes).

Submit a product review to Biocompare.com

Submit a review of this product to Biocompare.com to receive a \$20 Amazon.com giftcard! Your reviews help your fellow scientists make the right decisions. Thank you for your contribution.



Anti-Phospho-Thr356 PRAS40 Antibody, Phospho-Specific