

Anti-CDC27 phospho T244 Antibody

Catalog Number: P03905

About CDC27, D0S1430E

Human CDC27 (also called Cell division cycle protein 27 homolog, CDC27Hs and H-NUC) shares strong similarity with *Saccharomyces cerevisiae* protein Cdc27. This protein is a component of anaphase-promoting complex (APC), which is composed of eight protein subunits and highly conserved in eukaryotic cells. APC catalyzes the formation of a cyclin B-ubiquitin conjugate that is responsible for the ubiquitin-mediated proteolysis of B-type cyclins. This protein and 3 other members of the APC complex contain the TPR (tetratricopeptide repeat), a protein domain important for protein-protein interaction. This protein was shown to interact with mitotic checkpoint proteins including Mad2, p55CDC and BUBR1, and thus may be involved in controlling the timing of mitosis.

Overview

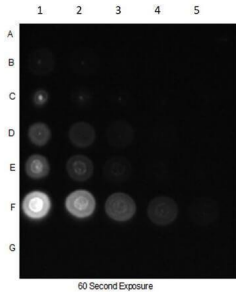
Product Name	Anti-CDC27 phospho T244 Antibody
Reactive Species	Human
Description	Boster Bio Anti-CDC27 phospho T244 Antibody (Catalog # P03905). Tested in Dot blot, ELISA, WB applications. This antibody reacts with Human.
Application	ELISA, IP, WB
Clonality	Polyclonal
Formulation	0.02 M Potassium Phosphate, 0.15 M Sodium Chloride, pH 7.2, 0.01% (w/v) Sodium Azide
Storage Instructions	Store vial at -20°C prior to opening. Aliquot contents and freeze at -20°C or below for extended storage. Avoid cycles of freezing and thawing. Centrifuge product if not completely clear after standing at room temperature. This product is stable for several weeks at 4°C as an undiluted liquid. Dilute only prior to immediate use. Expiration date is one (1) year from date of opening. (Ship on dry ice.)
Host	Rabbit
Uniprot ID	P30260

Technical Details

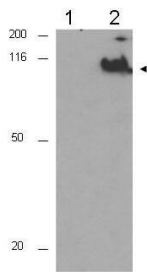
Immunogen	This affinity purified antibody was prepared from whole rabbit serum produced by repeated immunizations with a synthetic peptide corresponding to an internal portion surrounding T244 of Human CDC27.
Predicted Reactive Species	Bovine, Canine, Chicken, Chimpanzee
Cross Reactivity	No cross reactivity with other proteins.
Isotype	IgG

Form	Liquid (sterile filtered)
Concentration	1.0 mg/mL by UV absorbance at 280 nm
Purification	This affinity purified antibody is directed against the phosphorylated form of human CDC27 at the pT244 residue. The product was affinity purified from monospecific antiserum by immunoaffinity purification. Antiserum was first purified against the phosphorylated form of the immunizing peptide. The resultant affinity purified antibody was then cross adsorbed against the non-phosphorylated form of the immunizing peptide. Reactivity occurs against human CDC27 pT244 protein and the antibody is specific for the phosphorylated form of the protein. Reactivity with non-phosphorylated human CDC27 is minimal by ELISA. The antibody does not cross-react with CDC27 phosphorylated at other sites. A BLAST analysis was used to suggest reactivity with this protein from human, rat, dog, bovine and chimpanzee based on 100% homology for the immunogen sequence. Cross-reactivity with CDC27 protein from mouse, rat and chicken may occur as sequence homology varies by one amino acid residue in this sequence (90% homology). Cross-reactivity with CDC27 homologues from other sources has not been determined.
Suggested Dilutions	ELISA: 1:8,000 - 1:30,000 IP: 1:100 WB: 1:300 - 1:2,000 This affinity purified antibody has been tested for use in ELISA and by western blot. Specific conditions for reactivity should be optimized by the end user. Expect a band approximately 92 kDa in size corresponding to CDC27 by western blotting in the appropriate cell lysate or extract. Less than 1% reactivity is observed against the non-phosphorylated form of the immunizing peptide. This antibody is phospho specific for pT244 of CDC27.

Anti-CDC27 phospho T244 Antibody (P03905) Images



Dot Blot of Rabbit Anti-CDC27pT244 Antibody. Dilutions in Columns: (1) 100ng, (2) 33.33ng, (3) 11.11ng, (4) 3.7ng, (5) 1.23ng. Tested BSA Peptide Reactivity in Rows: (A) AKT1-BSA, (B) AKT1 pT308-BSA, (C) AKT1 S473-BSA, (D) AKT1 pS473-BSA, (E) CDC27 T244-BSA, (F) CDC27 pT244-BSA, (G) BSA control. Primary Antibody: Anti-CDC27pT244 at 1µg/mL overnight at 2-8°C. Secondary Antibody: Goat anti-Rabbit IgG HRP at 1:70,000 at RT for 30mins. Block: BlockOut Buffer .



Western blot using Boster's Affinity Purified anti-CDC27 pT244 antibody shows detection of a band ~92 kDa corresponding to phosphorylated human CDC27 (arrowhead). Lane 1 shows lysate from asynchronous cells. Lane 2 shows lysate from cells treated with nocodazole. Phosphorylated CDC27 is mostly present only in cell preparations arrested in mitosis. Each lane contains approximately 30 µg of HeLa whole cell lysates separated by 12.5% SDS-PAGE followed by transfer to nitrocellulose. After blocking with 5% non-fat dry milk in TTBS, the membrane was probed with the primary antibody diluted to 1:500 for 1 h at room temperature followed by washes and reaction with a 1:5,000 dilution of HRP Gt-a-Rabbit IgG [H&L] MX (611-103-122) for 45 min at room temperature. ECL reagent was used for detection. Other detection systems will yield similar results. Data contributed by Bing Li, UT Southwestern.

Submit a product review to Biocompare.com

Submit a review of this product to Biocompare.com to receive a \$20 Amazon.com giftcard! Your reviews help your fellow scientists make the right decisions. Thank you for your contribution.



Anti-CDC27 phospho T244 Antibody

For Research Use Only. Not for use in diagnostic procedures.