

Anti-Alkaline Phosphatase ALPI Antibody

Catalog Number: P06115

About ALP1

In most mammals there are four different isozymes: placental, placental-like, intestinal and tissue non-specific (liver/bone/kidney). Alkaline Phosphatase catalytic activity is phosphate monoester + H₂O = an alcohol + phosphate.

Overview

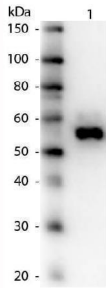
Product Name	Anti-Alkaline Phosphatase ALPI Antibody
Reactive Species	Human
Description	Boster Bio Anti-Alkaline Phosphatase ALPI Antibody (Catalog # P06115). Tested in WB applications. This antibody reacts with Human.
Application	ELISA, WB
Clonality	Polyclonal
Formulation	0.02 M Potassium Phosphate, 0.15 M Sodium Chloride, pH 7.2, 0.01% (w/v) Sodium Azide
Storage Instructions	Store vial at 4°C prior to restoration. For extended storage aliquot contents and freeze at -20°C or below. Avoid cycles of freezing and thawing. Centrifuge product if not completely clear after standing at room temperature. This product is stable for several weeks at 4°C as an undiluted liquid. Dilute only prior to immediate use. Expiration date is one (1) year from date of opening. (Ship at ambient temperature.)
Host	Rabbit
Uniprot ID	P09923

Technical Details

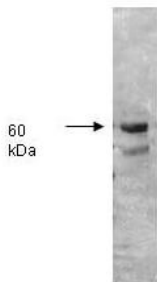
Immunogen	Alkaline Phosphatase [Human Intestine]
Predicted Reactive Species	Bovine, Canine, Human, Primate, Zebrafish
Cross Reactivity	No cross reactivity with other proteins.
Isotype	IgG
Form	Lyophilized
Concentration	1.0 mg/ml by UV absorbance at 280 nm
Purification	Anti-ALKALINE PHOSPHATASE is an IgG fraction antibody purified from monospecific antiserum by a multi-step process which includes delipidation, salt fractionation and ion exchange chromatography followed by extensive dialysis against the buffer stated above. Assay by

	immuno-electrophoresis resulted in a single precipitin arc against anti-Rabbit Serum as well as purified and partially purified Alkaline Phosphatase [Human Intestine]. Cross-reactivity against Alkaline Phosphatase from other sources is unknown.
Suggested Dilutions	ELISA: 1:4,000 - 1:20,000 WB: 1:500 - 1:2,000 ALKALINE PHOSPHATASE Antibody has been assayed against 1.0 µg of Alkaline Phosphatase [Human Intestine] in a standard ELISA using Peroxidase conjugated Affinity Purified anti-Rabbit IgG [H&L] (Goat) code #611-1302 and (ABTS (2,2'-azino-bis-[3-ethylbenthiazoline-6-sulfonic acid]) code # ABTS-100 as a substrate for 30 minutes at room temperature. A working dilution of 1:20,000 to 1:100,000 of the reconstitution concentration is suggested for this product.

Anti-Alkaline Phosphatase ALPI Antibody (P06115) Images



Western Blot of Rabbit Anti-Alkaline Phosphatase Primary Antibody. Molecular Weight Marker. Lane 1: Alkaline Phosphatase. Load: 50 ng per lane. Primary antibody: Alkaline Phosphatase primary antibody at 1:1,000 overnight at 4°C. Secondary antibody: Peroxidase rabbit secondary antibody at 1:40,000 for 30 min at RT. Block: for 30 min at RT. Predicted/Observed size: 58 kDa for Alkaline Phosphatase.



Both the antiserum and IgG fractions of anti-Alkaline Phosphatase (Human Intestine) are shown to detect under reducing conditions of SDS-PAGE the 60,000 dalton enzyme in cellular extracts. Approximately 10 ug of total protein is loaded per lane. A 1:5,000 dilution of the primary antibody is used followed by detection using HRP Goat-a-Rabbit IgG [H&L] (611-1302) diluted 1:4,000 and color development using 4-CN substrate until sufficient color develops. Other detection systems will yield similar results.

2 Publications Citing This Product

1. PubMed ID: 10.3892/mmr.2017.7183, Synergistic effects of fibroblast growth factor-2 and bone morphogenetic protein-2 on bone induction
2. PubMed ID: 28791357, Synergistic effects of fibroblast growth factor-2 and bone morphogenetic protein-2 on bone induction

Visit bosterbio.com/anti-alkaline-phosphatase-antibody-p06115-boster.html to see all 2 publications.

Submit a product review to Biocompare.com

Submit a review of this product to Biocompare.com to receive a \$20 Amazon.com giftcard! Your reviews help your fellow scientists make the right decisions. Thank you for your contribution.



Anti-Alkaline Phosphatase ALPI Antibody

For Research Use Only. Not for use in diagnostic procedures.