

Anti-Phospho-Histone H3 (pSer10) H3F3A Rabbit Monoclonal Antibody, Clone#RM163

Catalog Number: P06819

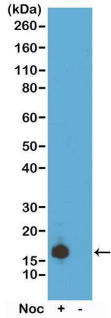
Overview

| | |
|----------------------|------------------------------------------------------------------------------------------------------------------------------------------------------------------------------------------------------------------------------------------------------------------------------------------------------------------------------------------------------------------------------------------------|
| Product Name | Anti-Phospho-Histone H3 (pSer10) H3F3A Rabbit Monoclonal Antibody, Clone#RM163 |
| Reactive Species | Human, Vertebrates |
| Description | Boster Bio Anti-Phospho-Histone H3 (pSer10) H3F3A Rabbit Monoclonal Antibody, Clone#RM163 (Catalog # P06819). Tested in WB, ICC, ELISA, Luminex applications. This antibody reacts with Human, Vertebrates. |
| Application | ELISA, ICC, WB, Luminex |
| Clonality | Monoclonal RM163 |
| Formulation | 50% Glycerol/PBS with 1% stabilizing protein and 0.09% sodium azide This antibody is supplied in a stabilized formulation. Compatibility with conjugation reactions depends on the chemistry of the conjugation method used. For conjugation methods that are not compatible with the stabilizing components present in this formulation, a carrier-free antibody format is required. |
| Storage Instructions | Store at -20°C for one year. Avoid repeated freeze-thaw cycles. |
| Host | Rabbit |
| Uniprot ID | P84243 |

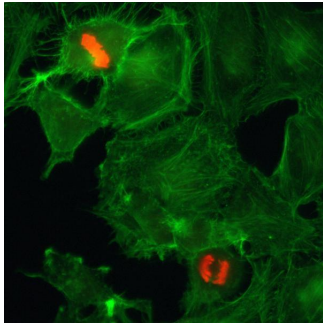
Technical Details

| | |
|---------------------|-------------------------------------------------------------------------------------------------------------------------|
| Immunogen | A phospho-peptide corresponding to Phospho-Histone H3 (Ser10) |
| Cross Reactivity | This antibody reacts to Histone H3 phosphorylated at Serine 10. No cross-reactivity with other phosphorylated histones. |
| Isotype | Rabbit IgG |
| Form | Liquid |
| Concentration | 1 mg/mL |
| Purification | Protein A affinity purified from an animal origin-free culture supernatant |
| Suggested Dilutions | WB: 0.5 ug/mL - 2 ug/mL ICC: 0.5 ug/mL - 2 ug/mL ELISA: 0.2 ug/mL - 1 ug/mL Luminex: 0.1 ug/mL - 1 ug/mL. |

Anti-Phospho-Histone H3 (pSer10) H3F3A Rabbit Monoclonal Antibody, Clone#RM163 (P06819) Images



ICC result Immunocytochemistry of HeLa cells using Phospho-Histone H3(Ser10) Rabbit mAb RM163 (red). Actin filaments have been labeled with fluorescein phalloidin (green).



ICC result Immunocytochemistry of HeLa cells using Phospho-Histone H3 (Ser10) Rabbit mAb RM163 (red). Actin filaments have been labeled with fluorescein phalloidin (green).

Submit a product review to Biocompare.com

Submit a review of this product to Biocompare.com to receive a \$20 Amazon.com giftcard! Your reviews help your fellow scientists make the right decisions. Thank you for your contribution.



Anti-Phospho-Histone H3 (pSer10) H3F3A Rabbit Monoclonal Antibody, Clone#RM163

For Research Use Only. Not for use in diagnostic procedures.