

## Anti-Phospho-Histone H3 (Thr3) H3F3A Rabbit Monoclonal Antibody, Clone#RM159

Catalog Number: P06819-1

### Overview

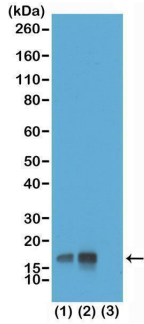
Product Name	Anti-Phospho-Histone H3 (Thr3) H3F3A Rabbit Monoclonal Antibody, Clone#RM159
Reactive Species	Human, Vertebrates
Description	Boster Bio Anti-Phospho-Histone H3 (Thr3) H3F3A Rabbit Monoclonal Antibody, Clone#RM159 (Catalog # P06819-1). Tested in WB, IHC, ICC, ELISA, Luminex applications. This antibody reacts with Human, Vertebrates.
Application	ELISA, IHC, ICC, WB, Luminex
Clonality	Monoclonal RM159
Formulation	50% Glycerol/PBS with 1% stabilizing protein and 0.09% sodium azide This antibody is supplied in a stabilized formulation. Compatibility with conjugation reactions depends on the chemistry of the conjugation method used. For conjugation methods that are not compatible with the stabilizing components present in this formulation, a carrier-free antibody format is required.
Storage Instructions	Store at -20°C for one year. Avoid repeated freeze-thaw cycles.
Host	Rabbit
Uniprot ID	P84243

### Technical Details

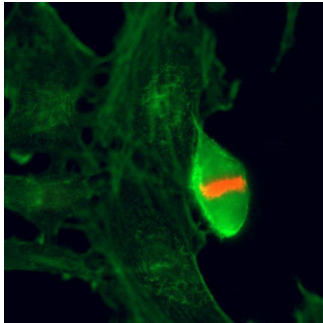
Immunogen	A phospho-peptide corresponding to Phospho-Histone H3 (Thr3)
Cross Reactivity	This antibody reacts to Histone H3 phosphorylated at Threonine 3. No cross-reactivity with other phosphorylated histones
Isotype	Rabbit IgG
Form	Liquid
Concentration	1 mg/mL
Purification	Protein A affinity purified from an animal origin-free culture supernatant
Suggested Dilutions	Western Blot: 0.1 ug/mL - 1 ug/mL IHC: 0.5 ug/mL - 2 ug/mL ICC: 0.5 ug/mL - 2 ug/mL ELISA: 0.2 ug/mL - 1 ug/mL Luminex: 0.1 ug/mL - 1 ug/mL.



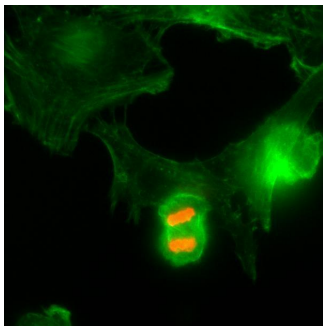
## Anti-Phospho-Histone H3 (Thr3) H3F3A Rabbit Monoclonal Antibody, Clone#RM159 (P06819-1) Images



ICC result Immunocytochemistry of HeLa cells using Phospho-Histone H3(Thr3) Rabbit mAb RM159 (red). Actin filaments have been labeled with fluorescein phalloidin (green).



ICC result Immunocytochemistry of HeLa cells using Phospho-Histone H3 (Thr3) Rabbit mAb RM159 (red). Actin filaments have been labeled with fluorescein phalloidin (green).



ICC result Immunocytochemistry of HeLa cells using Phospho-Histone H3 (Thr3) Rabbit mAb RM159 (red). Actin filaments have been labeled with fluorescein phalloidin (green).

### Submit a product review to [Biocompare.com](https://www.biocompare.com)

Submit a review of this product to [Biocompare.com](https://www.biocompare.com) to receive a \$20 Amazon.com giftcard! Your reviews help your fellow scientists make the right decisions. Thank you for your contribution.



Anti-Phospho-Histone H3 (Thr3) H3F3A Rabbit Monoclonal Antibody, Clone#RM159

For Research Use Only. Not for use in diagnostic procedures.