

## Anti-Phospho-Histone H3 (Thr6) H3F3A Rabbit Monoclonal Antibody, Clone#RM160

Catalog Number: P06819-2

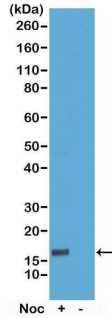
### Overview

Product Name	Anti-Phospho-Histone H3 (Thr6) H3F3A Rabbit Monoclonal Antibody, Clone#RM160
Reactive Species	Human, Vertebrates
Description	Boster Bio Anti-Phospho-Histone H3 (Thr6) H3F3A Rabbit Monoclonal Antibody, Clone#RM160 (Catalog # P06819-2). Tested in WB, ELISA, Luminex applications. This antibody reacts with Human, Vertebrates.
Application	ELISA, WB, Luminex
Clonality	Monoclonal RM160
Formulation	50% Glycerol/PBS with 1% stabilizing protein and 0.09% sodium azide This antibody is supplied in a stabilized formulation. Compatibility with conjugation reactions depends on the chemistry of the conjugation method used. For conjugation methods that are not compatible with the stabilizing components present in this formulation, a carrier-free antibody format is required.
Storage Instructions	Store at -20°C for one year. Avoid repeated freeze-thaw cycles.
Host	Rabbit
Uniprot ID	P84243

### Technical Details

Immunogen	A phospho-peptide corresponding to Phospho-Histone H3 (Thr6)
Cross Reactivity	This antibody reacts to Histone H3 phosphorylated at Threonine 6. No cross-reactivity with other phosphorylated histones
Isotype	Rabbit IgG
Form	Liquid
Concentration	1 mg/mL
Purification	Protein A affinity purified from an animal origin-free culture supernatant
Suggested Dilutions	WB: 0.1 ug/mL - 1 ug/mL ELISA: 0.2 ug/mL - 1 ug/mL Luminex: 0.1 ug/mL - 1 ug/mL.

## Anti-Phospho-Histone H3 (Thr6) H3F3A Rabbit Monoclonal Antibody, Clone#RM160 (P06819-2) Images



Western Blotting resultWestern Blot of acid extracts of HeLa cells treated or non-treated with Nocodazole. Using RM160 at 0.1 ug/mL, showed a band of Histone H3 phospho-rylated at threonine 6 in HeLa cells.

### Submit a product review to Biocompare.com

Submit a review of this product to Biocompare.com to receive a \$20 Amazon.com giftcard! Your reviews help your fellow scientists make the right decisions. Thank you for your contribution.



Anti-Phospho-Histone H3 (Thr6) H3F3A Rabbit Monoclonal Antibody, Clone#RM160

For Research Use Only. Not for use in diagnostic procedures.