

Anti-Selenophosphate Synthetase 1 SEPHS1 Antibody

Catalog Number: P10102

About SEPHS1

This antibody is suitable for Cancer, Immunology and Nuclear Signaling research. Selenophosphate synthetase 1 (SPS1) (also known as selenide water dikinase or selenium donor protein 1) is the homolog of the SelD gene product in E. coli. In E. coli, SelD generates the selenium donor for selenocysteine tRNA biosynthesis. The function of SPS1 in mammals is still unknown but appears to differ from that of E. coli SelD.

Overview

Product Name	Anti-Selenophosphate Synthetase 1 SEPHS1 Antibody
Reactive Species	Mouse
Description	Boster Bio Anti-Selenophosphate Synthetase 1 SEPHS1 Antibody (Catalog # P10102). Tested in ELISA, WB applications. This antibody reacts with Mouse.
Application	ELISA, IP, WB
Clonality	Polyclonal
Formulation	0.02 M Potassium Phosphate, 0.15 M Sodium Chloride, pH 7.2, 0.01% (w/v) Sodium Azide
Storage Instructions	Store vial at 4°C prior to restoration. For extended storage aliquot contents and freeze at -20°C or below. Avoid cycles of freezing and thawing. Centrifuge product if not completely clear after standing at room temperature. This product is stable for several weeks at 4°C as an undiluted liquid. Dilute only prior to immediate use. Expiration date is one (1) year from date of opening. (Ship at ambient temperature.)
Host	Rabbit
Uniprot ID	Q8BH69

Technical Details

Immunogen	This antibody was prepared from whole rabbit serum produced by repeated immunizations with a full-length recombinant protein corresponding to mouse SPS1.
Predicted Reactive Species	Primate
Cross Reactivity	No cross reactivity with other proteins.
Isotype	Antiserum
Form	Lyophilized
Concentration	85 mg/mL by Refractometry
Purification	This antibody is directed against mouse SPS1. The product is delipidated and defibrinated

antiserum. A BLAST analysis was used to suggest cross-reactivity with SPS1 from mouse, human and rat based on a 100% homology with the immunizing sequence. Reactivity against homologues from other sources is not known.

Suggested Dilutions

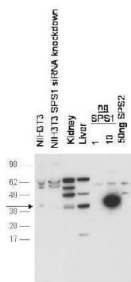
ELISA: 1:5,000 - 1:20,000

IP: 1:100

WB: 1:500 - 1:2,000

This antibody has been tested for use in ELISA and western blotting. Specific conditions for reactivity should be optimized by the end user. Expect a band approximately 43 kDa in size corresponding to SPS1 by western blotting in the appropriate cell lysate or extract.

Anti-Selenophosphate Synthetase 1 SEPHS1 Antibody (P10102) Images



Western blot using Boster's anti-SPS1 antibody shows detection of endogenous SPS1 in NIH3T3 cell (lane 1), mouse kidney, and liver tissue lysates (lanes 3-4). No signal is seen in NIH3T3 cells after pre-treatment with SPS1 siRNA (lane 2). SPS1 control (lane 5-6). Negligible cross-reactivity is seen against recombinant SPS2 (lane 7). The primary antibody was used at a 1:1000 dilution. Personal Communication, D. Hatfield, NCI, Bethesda, MD.

Submit a product review to Biocompare.com

Submit a review of this product to Biocompare.com to receive a \$20 Amazon.com giftcard! Your reviews help your fellow scientists make the right decisions. Thank you for your contribution.



Anti-Selenophosphate Synthetase 1 SEPHS1 Antibody

For Research Use Only. Not for use in diagnostic procedures.