

Anti-Phospho-ARHGAP22 S397 Antibody

Catalog Number: P10197

About ARHGAP22

ARHGAP22 is a Rho GTPase-activating protein involved in the signal transduction pathway that regulates endothelial cell capillary tube formation during angiogenesis. It acts as a GTPase activator for RAC1 by converting it to an inactive GDP-bound state and also inhibits RAC1-dependent lamellipodia formation. It may also play a role in transcription regulation via its interaction with VEZF1, by regulating activity of the endothelin-1 (EDN1) promoter. Anti-ARHGAP22 [p Ser22] antibody is ideal for researchers interested in Diabetes Research, Lipid and Metabolism research.

Overview

Product Name	Anti-Phospho-ARHGAP22 S397 Antibody
Reactive Species	Human, Mouse, Rat
Description	Boster Bio Anti-Phospho-ARHGAP22 S397 Antibody (Catalog # P10197). Tested in WB applications. This antibody reacts with Human, Mouse, Rat.
Application	ELISA, IF, IHC, WB
Clonality	Polyclonal
Formulation	0.02 M Potassium Phosphate, 0.15 M Sodium Chloride, pH 7.2, 50% (v/v) Glycerol
Storage Instructions	Store vial at -20°C prior to opening. Aliquot contents and freeze at -20°C or below for extended storage. Avoid cycles of freezing and thawing. Centrifuge product if not completely clear after standing at room temperature. This product is stable for several weeks at 4°C as an undiluted liquid. Dilute only prior to immediate use. Expiration date is six (6) months from date of opening. (Ship on dry ice.)
Host	Rabbit
Uniprot ID	Q8BL80

Technical Details

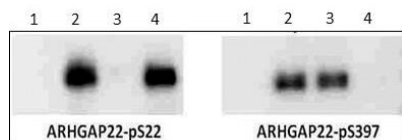
Immunogen	ARHGAP22 affinity purified antibody was prepared from whole rabbit serum produced by repeated immunizations with a synthetic phospho-peptide corresponding to the region surrounding mouse pS22 region of ARHGAP22.
Predicted Reactive Species	Mouse, Rat
Isotype	IgG
Form	Liquid (sterile filtered)
Concentration	1.07 mg/ml by UV absorbance at 280 nm
Purification	Anti-ARHGAP22 pS22 was affinity purified from monospecific antiserum by immunoaffinity

chromatography. This antibody is specific for phosphorylated ARHGAP22 at Serine 22. It also recognizes the S397->A mutation but not the S22->A mutation. A BLAST analysis was used to suggest cross-reactivity with Mouse, Rat and Human based on 100% sequence homology. Cross-reactivity with ARHGAP22 pS22 from other sources has not been determined.

Suggested Dilutions

ELISA: 1:20,000 - 1:60,000
IHC: 1:100-1:500
IF Microscopy: 1:100-1:500
WB: 1 µg/ml
Anti-ARHGAP22 pS22 antibody is tested in Western Blot and ELISA useful for Immunostaining. Specific conditions for reactivity should be optimized by the end user. Expect a band approximately ~77.8 kDa corresponding to the appropriate cell lysate or extract.

Anti-Phospho-ARHGAP22 S397 Antibody (P10197) Images



Western Blot of Rabbit anti-ARHGAP22 pS22 antibody. Lane 1: NIH3T3 cells transfected with a null vector. Lane 2: NIH3T3 cells transfected with ARHGAP22. Lane 3: NIH3T3 cells transfected with ARHGAP22 S22 to alanine mutation. Lane 4: NIH3T3 cells transfected with ARHGAP22 S397 to alanine mutation. Primary antibody: Left: ARHGAP22 pS22, Right: ARHGAP22 pS397 antibody at 1 μ g/mL for overnight at 4°C. Secondary antibody: IRDye800™ rabbit secondary antibody at 1:10,000 for 45 min at RT. Block: 5% BLOTTO O/N at 4°C. Predicted/Observed size: 68 kDa for ARHGAP22. Other band(s): Unmodified ARHGAP22. ARHGAP22-pS22 antibody recognizes the S397>A mutation, not the S22>mutation; ARHGAP22 pS397 recognizes the pS22>A mutation, not the pS397>A mutation; Confirms the specificity of each ARHGAP22 phospho specific antibody.

Submit a product review to [Biocompare.com](https://www.biocompare.com)

Submit a review of this product to [Biocompare.com](https://www.biocompare.com) to receive a \$20 Amazon.com giftcard! Your reviews help your fellow scientists make the right decisions. Thank you for your contribution.



Anti-Phospho-ARHGAP22 S397 Antibody

For Research Use Only. Not for use in diagnostic procedures.