

## Anti-Myosin phospho S19/phospho S20 MYL12A Antibody

Catalog Number: P11637-1

### About MYL12A

Myosin is the major component of thick muscle filaments, and is a long asymmetric molecule containing a globular head and a long tail. The molecule consists of two heavy chains each ~200,000 daltons, and four light chains each ~16,000 - 21,000 daltons. Activation of smooth and cardiac muscle primarily involves pathways that increase calcium levels and myosin phosphorylation, resulting in contraction. Myosin light chain phosphatase acts to regulate muscle contraction by dephosphorylating activated myosin light chain. This antibody is specific for the phosphorylated form of myosin light chain. The selected peptide sequence used to generate the polyclonal antibody is located near the amino terminal end of the polypeptide corresponding to the smooth/non-muscle form of myosin regulatory light chain found in cardiac myocytes in addition to smooth and non-muscle cells. This sequence differs from that of the sarcomeric/cardiac form of myosin regulatory light chain that has a different sequence around the phosphorylation site. Human and mouse have almost identical sequences. In human the phosphorylation site is pS19, while in mouse the site maps to pS20.

### Overview

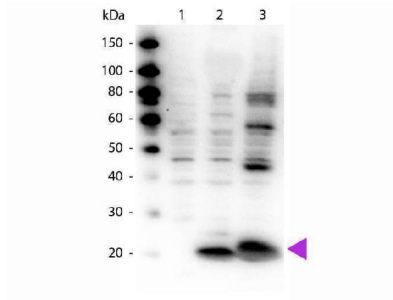
Product Name	Anti-Myosin phospho S19/phospho S20 MYL12A Antibody
Reactive Species	Human
Description	Boster Bio Anti-Myosin phospho S19/phospho S20 MYL12A Antibody (Catalog # P11637-1). Tested in ELISA, WB applications. This antibody reacts with Human.
Application	ELISA, IP, IHC, WB
Clonality	Polyclonal
Formulation	0.02 M Potassium Phosphate, 0.15 M Sodium Chloride, pH 7.2, 0.01% (w/v) Sodium Azide
Storage Instructions	Store vial at -20°C prior to opening. Aliquot contents and freeze at -20°C or below for extended storage. Avoid cycles of freezing and thawing. Centrifuge product if not completely clear after standing at room temperature. This product is stable for several weeks at 4°C as an undiluted liquid. Dilute only prior to immediate use. Expiration date is one (1) year from date of opening. (Ship on dry ice.)
Host	Rabbit
Uniprot ID	P19105

### Technical Details

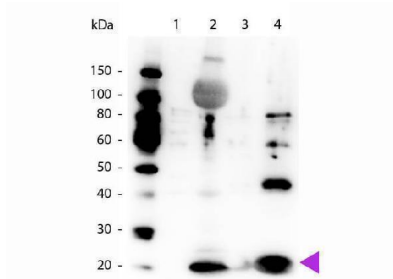
Immunogen	Human Myosin Light Chain phospho peptide corresponding to a region near the amino terminus of the human smooth/non-muscle form of myosin regulatory light chain conjugated to Keyhole Limpet Hemocyanin (KLH).
Predicted Reactive Species	Mouse
Cross Reactivity	No cross reactivity with other proteins.

Isotype	Antiserum
Form	Liquid (sterile filtered)
Concentration	70 mg/mL by Refractometry
Purification	Anti-Myosin pS19/pS20 antibody is directed against the regulatory light chain of smooth and non-muscle myosin. This antiserum is phosphospecific and detects monophosphorylated and diphosphorylated forms of the protein. Reactivity with non-phosphorylated myosin light chain is less than 1% by ELISA. Cross-reactivity is expected with myosin light chain from human and mouse. Reactivity with the protein from other species has not been determined. However, the sequence of the immunogen is nearly identical in mammalian and avian species. BLAST search analysis was used to determine that the smooth and non-muscle forms of myosin regulatory light chain have identical sequences. Cross-reactivity is expected.
Suggested Dilutions	<p>ELISA: 1:5,000 - 1:20,000            IHC: 2.5 µg/ml            IP: 1:100            WB: 1:1,000 - 1:5,000</p> <p>Anti-Myosin pS19/pS20 phospho specific polyclonal antibody was tested by ELISA and immunoblotting. Immunoblotting was used to show reactivity with unstimulated and stimulated cardiac myocytes. The antibody was also reactive with the phosphorylated form of the immunizing peptide and minimally reactive with the non-phosphorylated form of the immunizing peptide. Although not tested, this antibody is likely functional by immunohistochemistry and immunoprecipitation.</p>

## Anti-Myosin phospho S19/phospho S20 MYL12A Antibody (P11637-1) Images



Western Blot of Rabbit Anti-Myosin pS19/pS20 antibody. Lane 1: HeLa whole cell lysate . Lane 2: HeLa whole cell lysate + smooth muscle recombinant phospho protein. Lane 3: HeLa whole cell lysate + regulatory light chain recombinant phospho protein. Load: 10 $\mu$ g of whole cell lysate + 1.0 $\mu$ g of recombinant protein. Primary antibody: Myosin pS19/pS20 antibody at 1.0 $\mu$ g/mL overnight at 4 $^{\circ}$ C. Secondary antibody: Peroxidase rabbit secondary antibody at 1:40,000 for 30 min at RT. Blocking: 30 min at RT. Predicted/Observed size: 20 kDa, 20 kDa for RLC.



Western Blot of Rabbit Anti-Myosin pS19/pS20 antibody. Lane 1: Smooth muscle recombinant non-phospho protein. Lane 2: Smooth muscle recombinant phospho protein. Lane 3: Regulatory light chain recombinant non-phospho protein. Lane 4: Regulatory light chain recombinant phospho protein. Load: 1.0 ug of recombinant non-phospho protein, 5.0 ug of recombinant phospho protein. Primary antibody: Myosin pS19/pS20 antibody at 1.0 ug/mL overnight at 4 $^{\circ}$ C. Secondary antibody: Peroxidase rabbit secondary antibody at 1:40,000 for 30 min at RT. Blocking: 30 min at RT. Predicted/Observed size: 20 kDa, 20 kDa for RLC.

## 1 Publications Citing This Product

1. PubMed ID: 10.1093/abbs/gmaa038, Glucagon-like peptide 1 reverses myocardial hypertrophy through cAMP/PKA/RhoA/ROCK2 signaling

Visit [bosterbio.com/anti-myosin-phospho-s19-phospho-s20-antibody-p11637-1-boster.html](https://bosterbio.com/anti-myosin-phospho-s19-phospho-s20-antibody-p11637-1-boster.html) to see all 1 publications.

## Submit a product review to Biocompare.com

Submit a review of this product to Biocompare.com to receive a \$20 Amazon.com giftcard! Your reviews help your fellow scientists make the right decisions. Thank you for your contribution.



Anti-Myosin phospho S19/phospho S20 MYL12A Antibody

For Research Use Only. Not for use in diagnostic procedures.