

Anti-Selenophosphate Synthetase 2 SEPHS2 Antibody

Catalog Number: P11872

About SEPHS2

This antibody is suitable for Cancer, Immunology and Nuclear Signaling research. Selenophosphate synthetase (SeID) catalyzes the conversion of selenium to selenophosphate which is required by a number of bacterial, archaeal and eukaryotic organisms for synthesis of selenocysteine-tRNA, the precursor of selenocysteine in selenoenzymes. A second selenophosphate synthetase (SPS2) was identified in mammals. SPS2 is itself a selenoprotein in mammals.

Overview

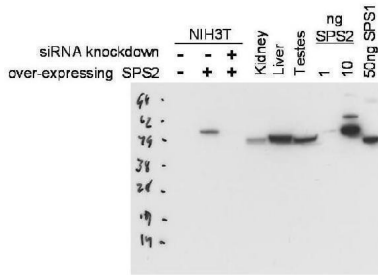
Product Name	Anti-Selenophosphate Synthetase 2 SEPHS2 Antibody
Reactive Species	Mouse
Description	Boster Bio Anti-Selenophosphate Synthetase 2 SEPHS2 Antibody (Catalog # P11872). Tested in ELISA, WB applications. This antibody reacts with Mouse.
Application	ELISA, IP, WB
Clonality	Polyclonal
Formulation	0.02 M Potassium Phosphate, 0.15 M Sodium Chloride, pH 7.2, 0.01% (w/v) Sodium Azide
Storage Instructions	Store vial at -20°C prior to opening. Aliquot contents and freeze at -20°C or below for extended storage. Avoid cycles of freezing and thawing. Centrifuge product if not completely clear after standing at room temperature. This product is stable for several weeks at 4°C as an undiluted liquid. Dilute only prior to immediate use. Expiration date is one (1) year from date of opening. (Ship on dry ice.)
Host	Rabbit
Uniprot ID	P97364

Technical Details

Immunogen	This Protein A purified antibody was prepared from whole rabbit serum produced by repeated immunizations with a full-length recombinant protein corresponding to mouse SPS2.
Predicted Reactive Species	Bovine, Canine
Cross Reactivity	No cross reactivity with other proteins.
Isotype	IgG
Form	Liquid (sterile filtered)
Concentration	2.3 mg/mL by UV absorbance at 280 nm

Purification	This product was purified by Protein A chromatography from monospecific antiserum. This antibody reacts with mouse SPS2 and shows partial cross-reactivity with SPS1. A BLAST analysis was used to suggest cross-reactivity with SPS2 from human sources based on an 84% homology with the immunizing sequence. Cross-reactivity with SPS2 from other sources has not been determined.
Suggested Dilutions	ELISA: 1:5,000 - 1:20,000 IP: 1:100 WB: 1:500 - 1:2,000 This Protein A purified antibody has been tested for use in ELISA and western blotting. Specific conditions for reactivity should be optimized by the end user. Expect a band approximately 48 kDa in size corresponding to SPS2 by western blotting in the appropriate cell lysate or extract.

Anti-Selenophosphate Synthetase 2 SEPHS2 Antibody (P11872) Images



Western blot using Boster's Protein A purified anti-SPS2 antibody shows detection of SPS2 in NIH3T3 cells over-expressing this protein. No signal is seen in control lysates or in lysates from cells over-expressing the protein after pre-treatment with SPS2 siRNA. Endogenous SPS2 can be detected in mouse kidney, liver and testes tissue lysates. Partial cross-reactivity is seen against recombinant SPS1. The primary antibody was used at a 1:1000 dilution. Personal Communication, D. Hatfield, NCI, Bethesda, MD.

Submit a product review to Biocompare.com

Submit a review of this product to Biocompare.com to receive a \$20 Amazon.com giftcard! Your reviews help your fellow scientists make the right decisions. Thank you for your contribution.



Anti-Selenophosphate Synthetase 2 SEPHS2 Antibody

For Research Use Only. Not for use in diagnostic procedures.